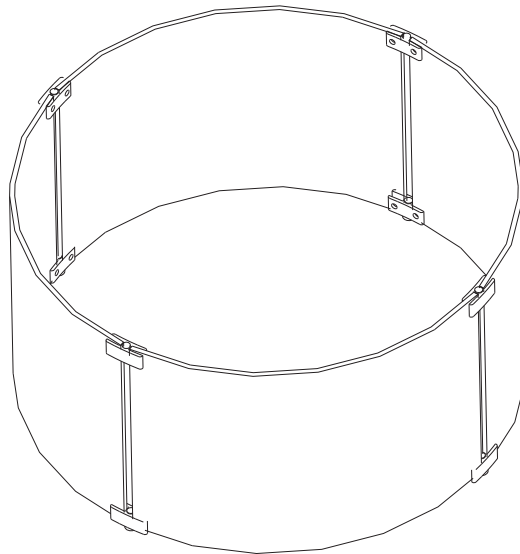


Comfort, Quality & Style Since 1998

FireSense®

## Round Tempered Glass Wind Guard for Gas Fire Pits

Item #: 63246, 64009



### ATTACH YOUR RECEIPT HERE

Keep a copy of your proof of purchase or order confirmation which will be needed if you need to contact us about warranty coverage.

Purchase Date: \_\_\_\_\_



### SAVE THESE INSTRUCTIONS FOR FUTURE REFERENCE.



### Questions, problems, missing parts?

Before returning to your retailer, our Florida-based customer service team is available to assist. *English & Spanish speaking.*

Call toll-free (866) 985-7877

9 a.m. – 9 p.m., EST

Email [cservice@welltraveled.net](mailto:cservice@welltraveled.net)

Live chat [www.balkenehome.com](http://www.balkenehome.com)

9 a.m. – 6 p.m., EST., Monday - Friday

05242022



## BEFORE YOU BEGIN

Before beginning assembly, make sure all parts are present. Compare parts received with the "Package Contents." If any part is missing or damaged, do NOT attempt to assemble the product. Please read and understand this entire manual before attempting to assemble, operate, or install this product. If you have



## SAFETY INFORMATION

### WARNING

DO NOT stand or allow children to stand on the assembled product. DO NOT place anything on top of the assembled product. DO NOT tighten screws completely until instructed to do so. After final alignment, make sure all hardware is securely fastened before attempting to move the unit. NEVER use a power tool to assemble or adjust your item. Perform periodic checks to make sure the hardware is secure and tighten if needed.

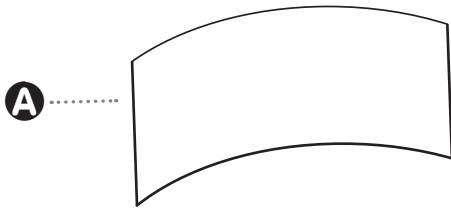
### CAUTION

Read all instructions before beginning assembly. Failure to do so may result in faulty assembly and potential injury. Assemble the item on a soft, non-abrasive surface such as a towel or blanket to avoid damaging the item.



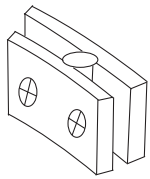
## CARE

When wind guard is completely cool, it may be cleaned with a soft cloth or paper towel and standard glass cleaner. Never spray cleaner or water on a hot wind guard, as it could crack or shatter. Store the wind guard in a safe place during poor weather or when not in regular use.

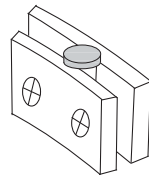


PART	DESCRIPTION	QUANTITY
<b>A</b>	Glass Panel	4

## **HARDWARE CONTENTS**



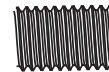
**B**  
**Top Bracket**  
Qty: 4



**C**  
**Bottom Bracket**  
Qty: 4



**Screwdriver**  
Qty: 1



**Flat-end  
Screw (Spare)**  
Qty: 2



**Screw-tip  
Pad (Spare)**  
Qty: 2

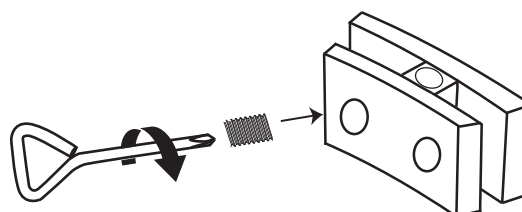
**NOTE:** Each of the eight wind guard brackets should arrive with two flat-ended screws pre-assembled in the bracket. Each screw should have a clear rubbery pad/cap at the inner tip that protects the glass panel from the screw and helps hold the panels in place. Sometimes small parts can rattle loose in shipping, so check each bracket and screw for proper assembly before assembling the wind guard. If any screw or screw pad is missing, check the packaging for the hardware and the shipping carton.

Contact Customer Service at [cservice@welltraveled.net](mailto:cservice@welltraveled.net) for replacement parts if necessary.

**To replace a screw pad:**  
Press the clear pad into the tip of the screw



**To replace a screw:**  
Screw the screw partially into the bracket (do not fully tighten)





## PREPARATION

Before beginning assembly, be sure to empty contents of carton and make sure all parts are present. If any parts are missing, please contact Customer Service at **(866) 985-7877**, 9 a.m.–9 p.m., EST., or email [cservice@welltraveled.net](mailto:cservice@welltraveled.net).

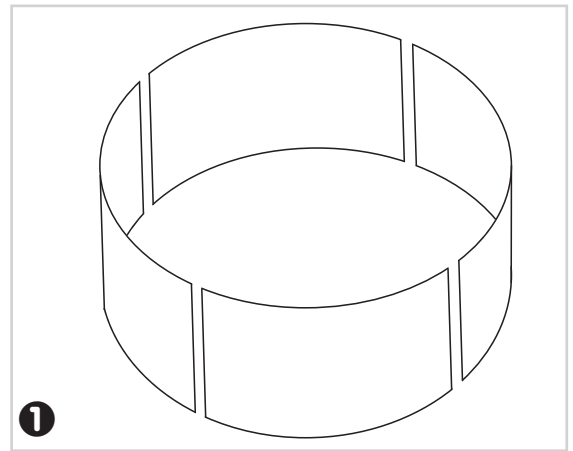
Carefully remove the glass panels from the packaging and inspect for any damage such as chips or cracks. Place glass panels on a soft, flat surface to prevent any damage. Before assembly, ensure that each bracket has 2 set-screws, with silicone pads attached at the tip.

Estimated Assembly Time: 30 minutes | Do NOT over-tighten hardware!

**1** You will assemble the wind guard upside-down. It is recommended to assemble on the floor on a protected surface such as a blanket to avoid accidental breakage.

Arrange the four glass **Panels A** in a circle.

Verify that all **Brackets B/C** are assembled with a plastic bumper pad at the tip of both set-screws and with the set-screws loosened adequately to allow the brackets to slide easily onto the glass panels.



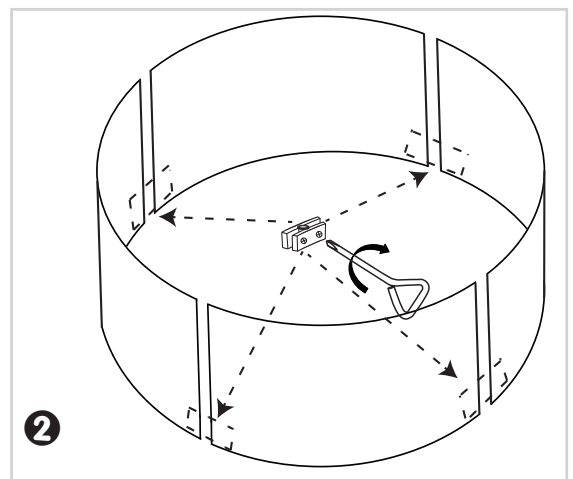
**2** Slide a **Top Bracket B** onto the junction of two **Glass Panels A** as shown.

Align the **Bracket** with the lower (top) edges of the adjoining **Panels**.

Verify that the bumper pad is in place at the tip of each bracket set-screw. **Do NOT tighten the screw directly to the glass if the pad is missing.** Check the carton for spare pads, or contact Customer Service.

Check alignment, then carefully tighten set-screws until snug. **WARNING: over-tightening can break glass!**

Continue to join **Panels** one at a time by the same procedure until all four panels are joined to form a complete circle. Once all four **Top Brackets** are in place, check the security of all eight set-screws.



**Hardware Used:**      **B Top Bracket** x4

**3** Carefully slide a **Bottom Bracket**  onto the top of each panel joint, with the cushioned foot pad pointed UP.

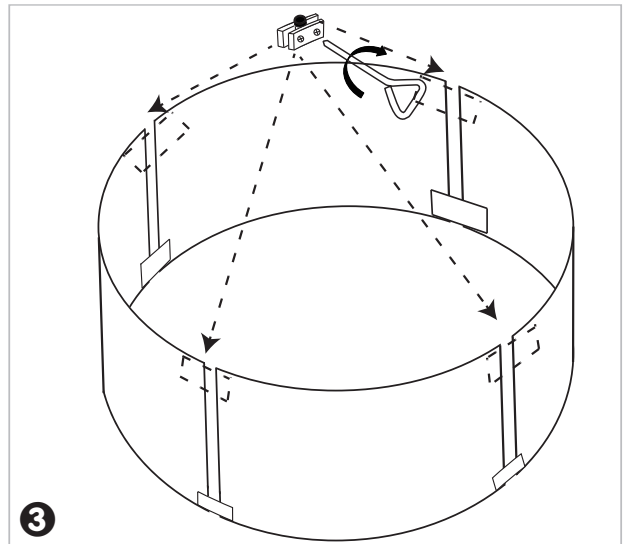
Align the edge of the metal **Bracket** with the edge of the two glass panels, adjusted so the foot pad will hold the assembled wind guard slightly off the table surface when placed upright.

Verify that the bumper pad is in place at the tip of each bracket set-screw. **Do NOT tighten the screw directly to the glass if the pad is missing.** Check the carton for spare pads, or contact Customer Service.

Check alignment, then carefully tighten set-screws until snug. **WARNING: over-tightening can break glass!**

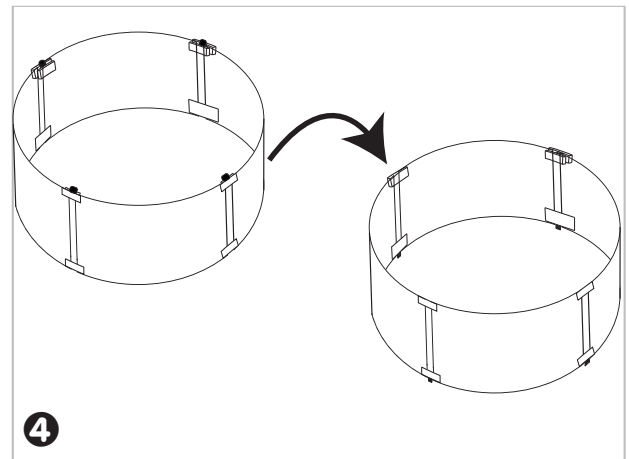
Install the remaining three **Bottom Brackets** in the same manner.

**Hardware Used:**  **Bottom Bracket** x4



**4** Carefully (using two people if possible) turn the assembled wind guard upright. Gently set the glass guard onto the fire pit table, positioning the feet flat and level outside the edges of the burner. Check that the bottom edges of the glass panels are not directly touching the tabletop, and are held off slightly by the foot pads of the lower brackets. Ensure that the foot pads are not sitting directly on the fire bowl.

Be aware that the glass and hardware may become warm or hot after prolonged burning of the fire pit and take reasonable precautions to avoid burns.





by

BALKENE  
— HOME —



## LIMITED WARRANTY

Customers in the Contiguous US

With proof of purchase from an authorized retailer, this product is warranted for a period of 1 year from original purchase date against defects in materials and workmanship under normal use. This warranty does NOT cover normal wear/weathering, exposure to water, freezing temperatures, oils, fluids, or chemicals OR use in a commercial context if the unit is not designated as a commercial model. At Well Traveled Living's sole discretion, products under warranty will be repaired and/or replaced at no charge to the customer. Returns sent back to Well Traveled Living must be sent via prepaid freight in the original retail packaging.

For warranty service, contact Balkene Home/Well Traveled Living at the address, phone numbers or website and email listed in this owner's manual. Be sure to have your sales receipt, date of purchase and catalogue/model numbers available when calling. All warranty service will be coordinated by Well Traveled Living's Amelia Island, Florida service center. This warranty is extended only to the original owner. Proof of purchase will be required before warranty service is rendered. The sales receipt is the only valid proof of purchase. This warranty only covers failures due to defects in materials or workmanship which occur during normal use. Failures and/or damage which result from accident, negligence, misuse, abuse, neglect, mishandling, alteration or modification, failure to maintain, improper assembly or maintenance, service by unauthorized agency or use of unauthorized components or damage that is attributable to acts of God are NOT covered.

This limited warranty gives you specific legal rights and you may also have other rights which vary from jurisdiction to jurisdiction. The provisions of the United Nations Convention on Contracts for the Sales of Goods shall not apply to this limited warranty or the sale of products covered by this limited warranty.

- THERE ARE NO EXPRESS WARRANTIES EXCEPT AS LISTED.
- PURCHASER ASSUMES ALL RISKS IN THE ASSEMBLY AND OPERATION OF THIS UNIT.
- FAILURE TO FOLLOW WARNINGS AND OPERATIONAL INSTRUCTIONS CONTAINED IN THIS MANUAL CAN RESULT IN SEVERE PROPERTY DAMAGE AND/OR PERSONAL INJURY.
- IN NO EVENT WILL WELL TRAVELED LIVING, OR ITS DIRECTORS, OFFICERS OR AGENTS BE LIABLE TO THE PURCHASER OR ANY THIRD PARTY, WHETHER IN CONTRACT, IN TORT, OR ON ANY OTHER BASIS, FOR ANY INDIRECT, SPECIAL, PUNITIVE, EXEMPLARY, CONSEQUENTIAL, OR INCIDENTAL LOSS, COST, OR DAMAGE ARISING OUT OF OR IN CONNECTION WITH THE SALE, MAINTENANCE, USE, OR INABILITY TO USE THE PRODUCT, EVEN IF WELL TRAVELED LIVING OR ITS DIRECTORS, OFFICERS OR AGENTS HAVE BEEN ADVISED OF THE POSSIBILITY OF SUCH LOSSES, COSTS OR DAMAGES, OR IF SUCH LOSSES, COSTS, OR DAMAGES ARE FORESEEABLE. IN NO EVENT WILL WELL TRAVELED LIVING, OR ITS OFFICERS, DIRECTORS, OR AGENTS BE LIABLE FOR ANY DIRECT LOSSES, COSTS OR DAMAGES THAT EXCEED THE PURCHASE PRICE OF THE PRODUCT.
- SOME JURISDICTIONS DO NOT ALLOW THE EXCLUSION OR LIMITATION OF INCIDENTAL OR CONSEQUENTIAL DAMAGES, SO THE ABOVE LIMITATION OR EXCLUSION MAY NOT APPLY TO THE PURCHASER.

## EXTEND YOUR WARRANTY

When you purchase a Fire Sense or Balkene Home product from any authorized retailer, you'll have peace of mind in knowing that it comes with a one-year warranty. Extend your warranty for *an additional year* when you review your item at [balkenehome.com](http://balkenehome.com) within 365 days of purchase.



### Important Notice

Before returning to place of purchase—for customer service and warranty issues:

Call toll-free	<b>(866) 985-7877</b>	9 a.m. – 9 p.m., EST
Email	<b><a href="mailto:cservice@welltraveled.net">cservice@welltraveled.net</a></b>	
Live chat	<b><a href="http://balkenehome.com">balkenehome.com</a></b>	9 a.m. – 6 p.m., EST, Mon – Fri

Distributed by:  
Well Traveled Living  
716 S 8th Street, Amelia Island, FL 32034  
[balkenehome.com](http://balkenehome.com)  
[cservice@welltraveled.net](mailto:cservice@welltraveled.net)  
(866) 985-7877