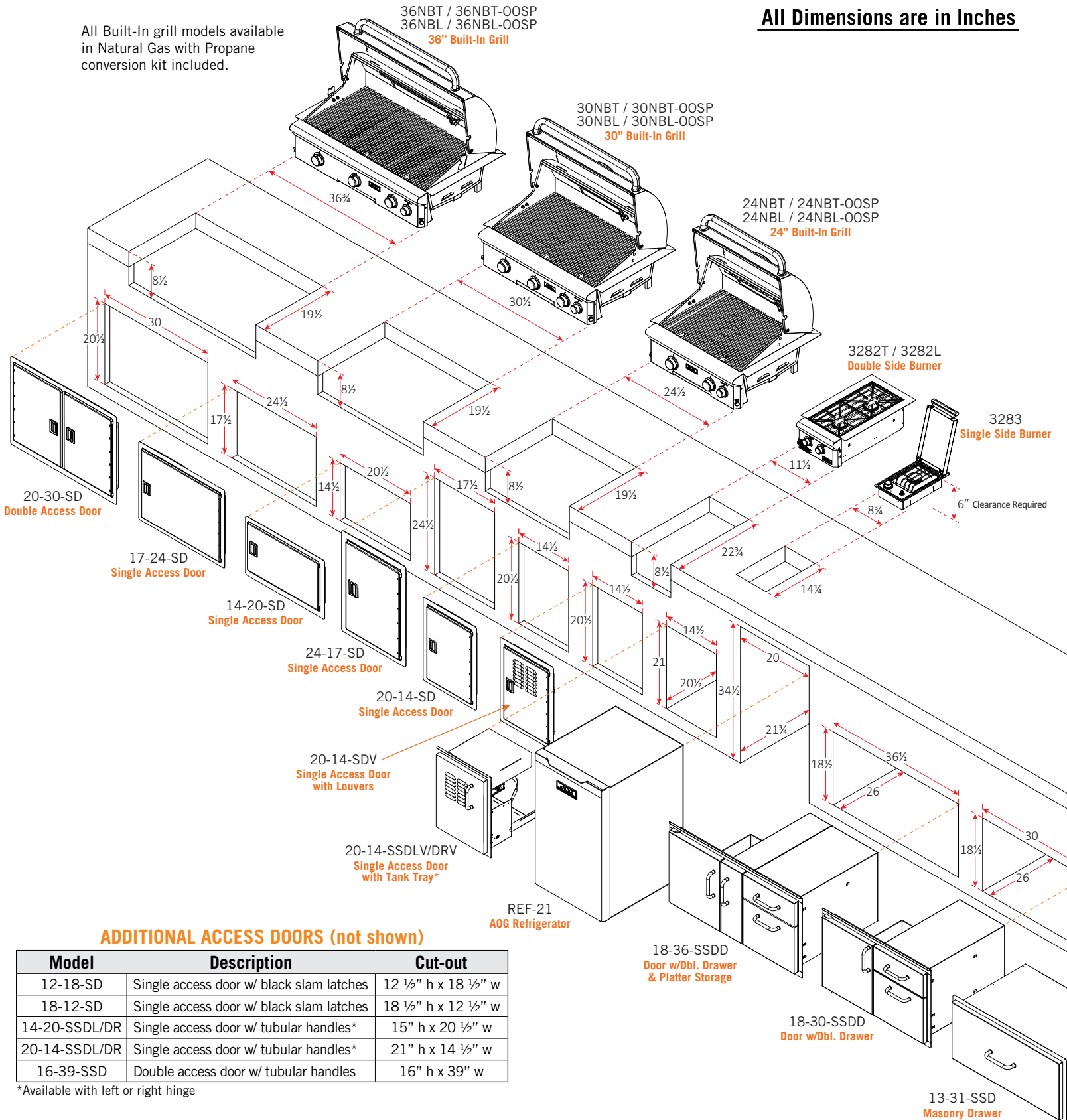


All Built-In grill models available in Natural Gas with Propane conversion kit included.

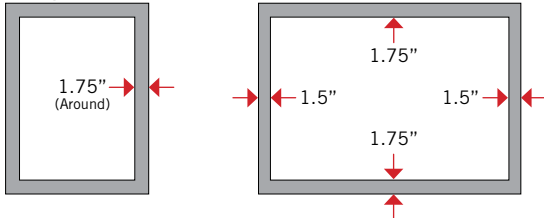
All Dimensions are in Inches



Overlap Dimensions / Doors w/ black slam latches

Single Doors

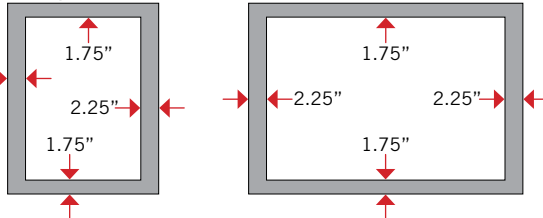
Double Doors

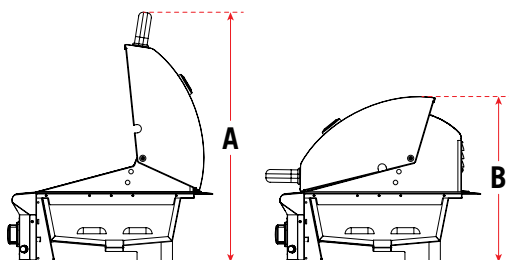


Overlap Dimensions / Doors w/ tubular handles

Single Doors

Double Doors





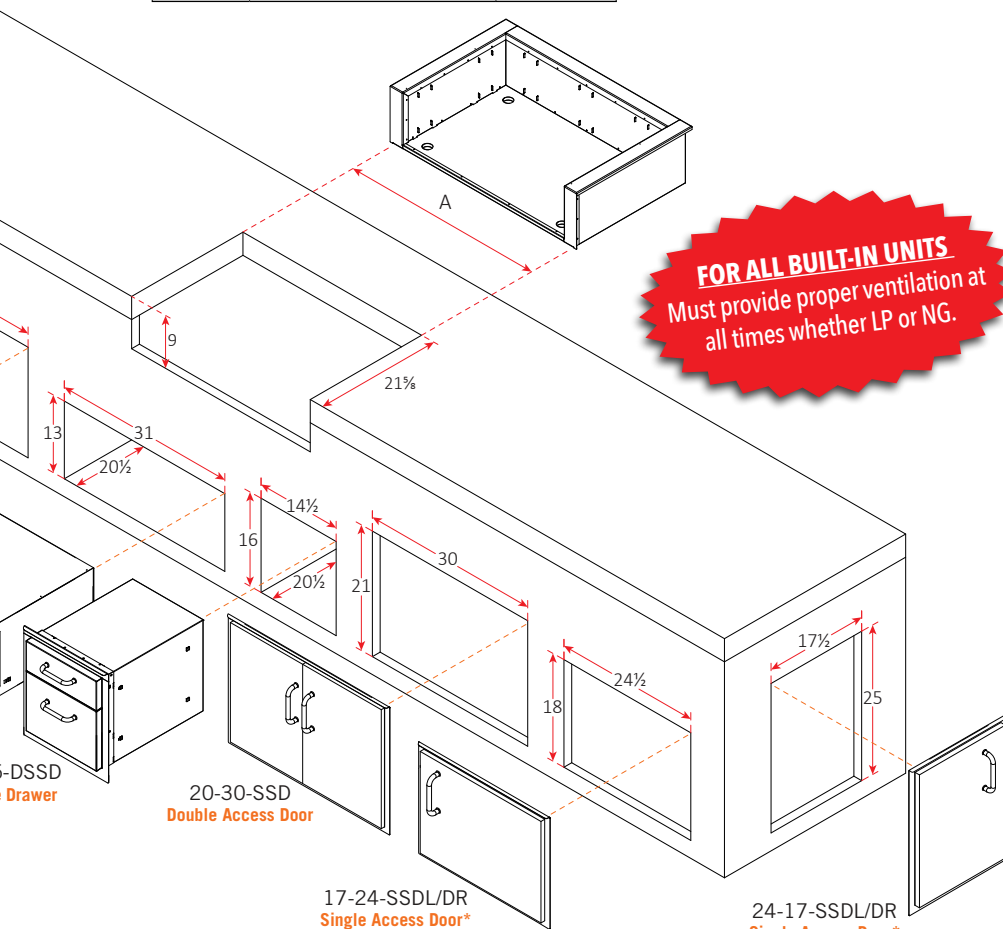
Built-In Grills Height Dimensions

Description	Hood Open (A)	Hood Closed (B)
24NBT/24NBL	30½"	20"
30NBT/30NBL	30½"	20"
36NBT/36NBL	30½"	20"

Grill Insulating Liners

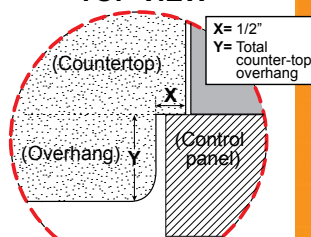
(must be used when installing in a combustible island)

Model	Description	"A" Cut-out
24-IL-C	24" Grill Insulating Liner	28 ⅝"
30-IL-C	30" Grill Insulating Liner	34 ⅝"
36-IL-C	36" Grill Insulating Liner	40 ⅝"

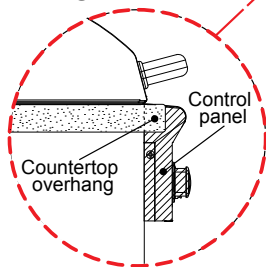


FOR ALL BUILT-IN UNITS
Must provide proper ventilation at all times whether LP or NG.

TOP VIEW

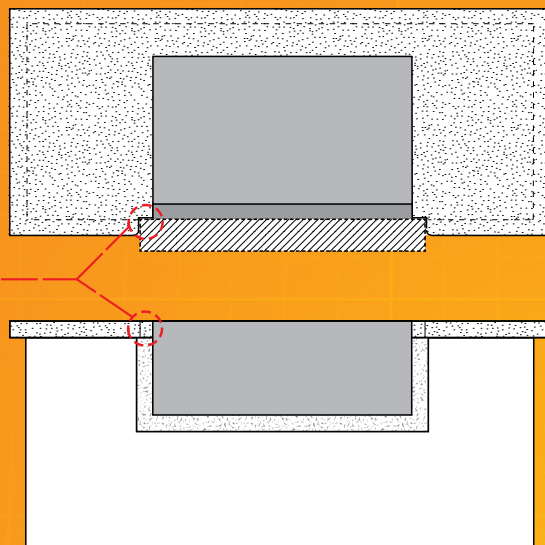


SIDE VIEW



ISLAND COUNTER-TOP OVERHANG

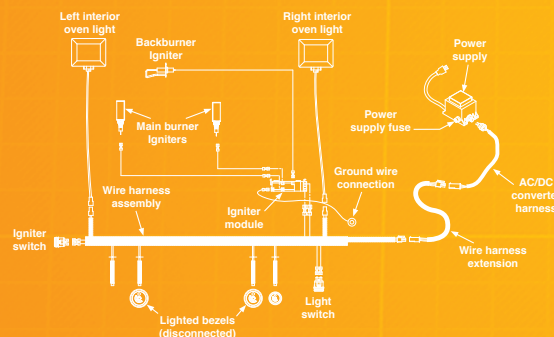
The control panel is designed to sit flush against the enclosure front wall. If the enclosure counter-top extends beyond the front wall, creating a counter-top overhang, it must be cut flush with the front wall for the width of the control panel or a gap will be created exposing the forward portions of the left and right side grill fire walls. See illustrations below.



"L" SERIES ELECTRICAL SPECIFICATIONS

- "L" Series grills require **120VAC** power to operate
- Power supply rating - **120VAC / 0.3A / 60 Hz**
- Oven lights rating - **12V / 10 watt** halogen bulb

BUILT-IN GRILL WIRING DIAGRAM *



* 24" model shown. Model wire vary between models, a wire diagram specific to each unit can be found affixed to the inside of the control panel.

OUTDOOR KITCHEN CONSIDERATIONS

- Carefully consider grill size & accessories needed
- Combustible construction requires insulating liner
- Select Natural or Propane (LP gas)
- Determine total gas consumption for supply line size
- Access required to gas connections and shut off valve
- Plan location of propane tank away from grill and appliances
- Always refer to the installation and operating instructions of your American Outdoor Grill® and/or accessories for installation guidelines & safety warnings before starting your project
- Always check all gas connections for leaks
- Provide ventilation in island for gas vapors. Allow at least four ventilation openings (two at floor level and two 16" above floor 10 in² each) at opposing ends/sides

LOCATION

- Identify outdoor area where grill will be installed
- Determine the utilities needed (gas, water, electricity, drainage etc.)
- Consider element exposure (sun, wind direction, weather etc.)

MATERIALS

- Foundation - concrete
- Base - brick, stone, stucco, concrete
- Counter top - tile, granite, marble, concrete

*Available with left or right hinge