



WATER & FIRE PRODUCTS CATALOG







Hand-Drafted
in Phoenix

A large, modern outdoor pool with a waterfall feature on the left and a fire pit on the right. The pool is surrounded by a dark, wooded area. The text is overlaid on the pool area.

(Pronounced "Bow-bay")

Bobé products are artisan made at the point where traditional craftsmanship and technology meet. Professional artisans design and manipulate structures made of heavy-duty copper and steel. Meanwhile, state-of-the-art machinery precision builds the Perfect Flame burner and stamps designer water features.

You won't find another brand like Bobé. It's where the elements of fire and water are manipulated to create the highest quality outdoor designer features that inspire.

Find Your Element™

**ARTISAN
CRAFTED**



TIG welded, Hand polished, Made in
Phoenix, AZ

**HIGH
QUALITY**



Heavy grade materials, Perfect Flame™
design, Solid metal construction

**MADE
BY CMP**



Industry-leading water features,
Award-winning customer support

TABLE OF CONTENTS

WATER PRODUCTS 7

Pure Flow 12
Scuppers 13
Water Bowls 17

FIRE PRODUCTS 21

Artisan Series Water + Fire 24
Builder Series Water + Fire 26
Fire Pots 30
Flight™ Series 32
DIY Kits 33
Fire Tables 36
Prefab Fire Pits 37
Glass & Rock Bowl Media 38
Parts & Accessories 40

DESIGNER PRODUCTS 41

Planters 42
Cor-ten® Planters 44

REFERENCES 47

Special Order Options 48
Material Care & Maintenance 49
Gas & Ignitor Install Reference 51
Warranty 52
Terms & Conditions 54



WELCOME TO THE BOBÉ® PRODUCTS CATALOG

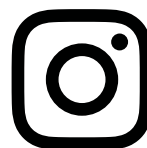
Let's get right to it. Our #1 goal is to make Bobé® a family of products that you love to sell and install. From the product quality, to customer support, to this catalog, we hope it's a pleasure to work with Bobé® brand products from CMP.

You will notice a couple things right away in this catalog. We focused on more product information, extra details and better organization. We dialed in the selection to feature our absolute best selling products.

We hope you love working with Bobé brand products as much as we do. You are our top priority. Contact us directly at info@c-m-p.com if you need anything, anytime.



Follow @cmppoolspa and @bobewaterandfire



CHECK OUT MORE GREAT PRODUCTS FROM CMP



WATER FEATURES



LED LIGHTING



SANITIZERS



WHITE GOODS

CONTACT & CUSTOMER SUPPORT

CUSTOMER SERVICE/ORDERS

MONDAY-FRIDAY: 9:30AM - 6:00PM (EST)
1-800-733-9060
bobesales@c-m-p.com

ACCOUNTS PAYABLE
ap@c-m-p.com

PRODUCT INFO

MONDAY-FRIDAY: 9:30AM - 6:00PM (EST)
bobecare@c-m-p.com

CMP PRODUCT INFO
poolsales@c-m-p.com

LOCATIONS

CORPORATE HEADQUARTERS-
CMP EAST DISTRIBUTION
36 Herring Road, Newnan, GA 30265
info@c-m-p.com

CMP WEST DISTRIBUTION
5100 Western Way, Perris, CA 92571

BOBÉ MANUFACTURING
3101 N 29th Ave, Phoenix, AZ 85017

TECHNICAL SUPPORT

MONDAY-FRIDAY: 8:00AM - 5:00PM (EST)
1-800-733-9060
support@c-m-p.com
c-m-p.com/support

ON THE WEB

www.bobewaterandfire.com
www.c-m-p.com

PRODUCT VIDEOS
youtube.com/cmppoolspa

FOLLOW CMP & BOBÉ:
@bobewaterandfire
@cmppoolspa

ONLINE SUPPORT
c-m-p.com/support
c-m-p.com/tech

LOCATE A REPRESENTATIVE
c-m-p.com/find-a-representative

MARKETING SUPPORT

Download and customize digital assets for CMP and Bobé for FREE! Sign up at c-m-p.com/assets

To request printed brochures and other resources, contact your CMP/Bobé sales rep.

HOW TO ORDER BOBE PRODUCTS

We are making it much easier to order from Bobé! In the past most Bobé products were ordered by specifying size and materials using an order sheet, even if they had a part number. Catalog product orders with no modifications *no longer require* completing a detailed specification order sheet. All products can now be ordered using the standard part number.

* NON-STANDARD OPTIONS

Some products and variations take extra care or require longer lead times. Throughout the catalog these items are indicated in the Ordering Guides with an orange asterisk. * You can always contact bobesales@c-m-p.com for more information on specific lead times.

SPECIAL ORDERS

Bobé has a long history of working with talented designers to create customized products for special installations. Many of our products can be ordered with different finishes or custom sizing. Any special orders will effect lead times and pricing and must be quoted on a per-job basis.

For details on special orders see page 48

ORDERING FOR NATURAL GAS OR LIQUID PROPANE

NEW for 2020. All fire products must now be specified as Natural Gas or Liquid Propane when ordered. Fire product part numbers all end in "XX." Replace the "XX" with "LP" for Liquid Propane or "NG" for Natural Gas when ordering.

MATERIALS

Product photography in this catalog shows materials in their "natural" state. Metals like copper and Cor-ten will change color and patina, even before they are delivered.

For more information view material guide on page 49

WHAT'S INCLUDED?

- Complete Manual fire products include: burner, Media pan, Key valve kit, Valve, Key, Flange, Street Elbow, 12" Nipple, Reducer, Air mixer (propane only)
- Complete Auto fire products include: burner, Media pan, Igniter/sensor, Valve box, Transformer, Regulator, Air mixer (propane only)
- Glass/rock media is sold separately

OTHER INFORMATION

Terms & Conditions pg 54 | Limited Warranty pg 52 | Content & Trademark Disclaimers pg 55

All illustrations, photographs, product details and specifications in this catalog are current as of available information at the time of printing.

To access the digital version of this catalog, you may view or download online at www.c-m-p.com/catalog or bobewaterandfire.com

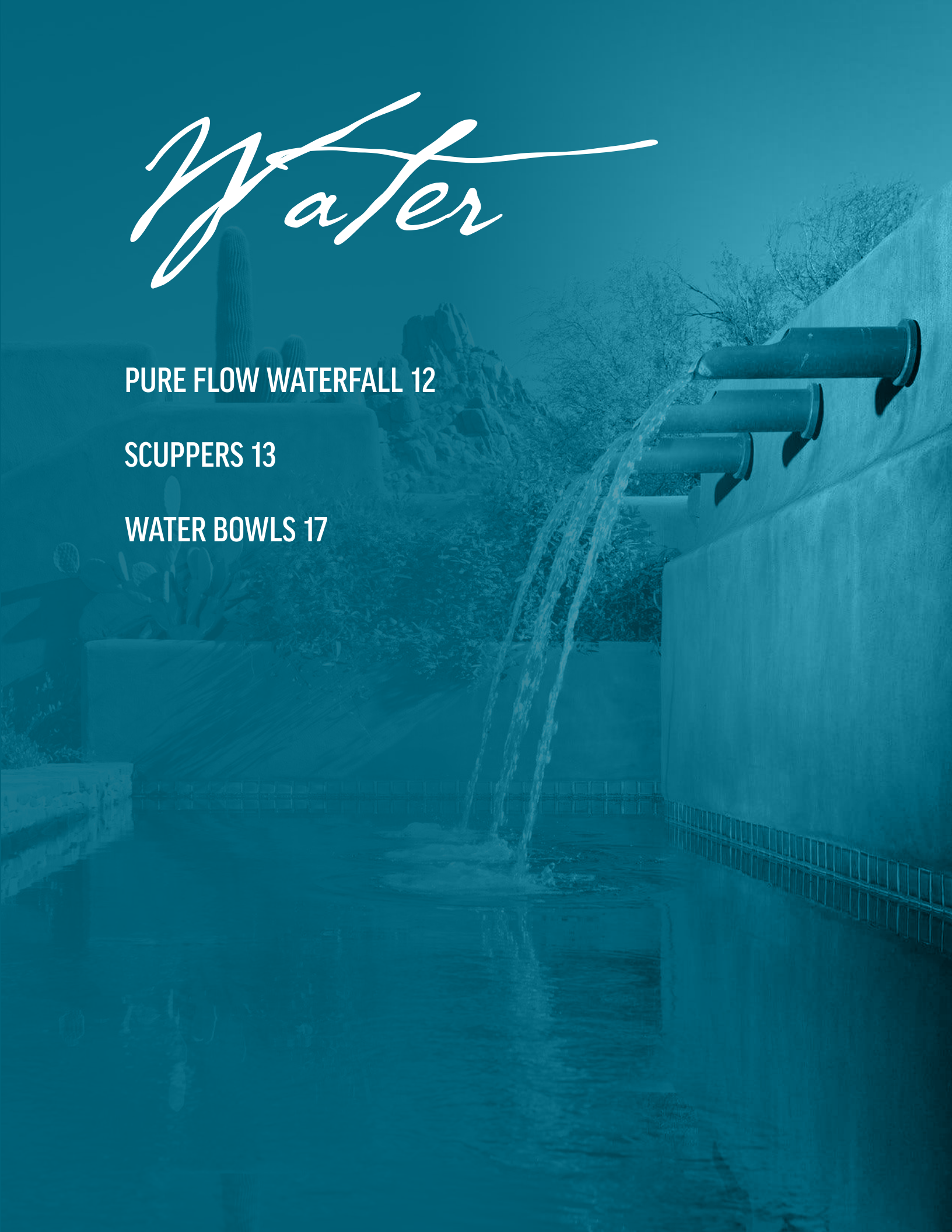


Water

PURE FLOW WATERFALL 12

SCUPPERS 13

WATER BOWLS 17



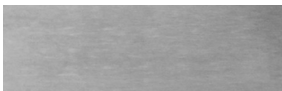
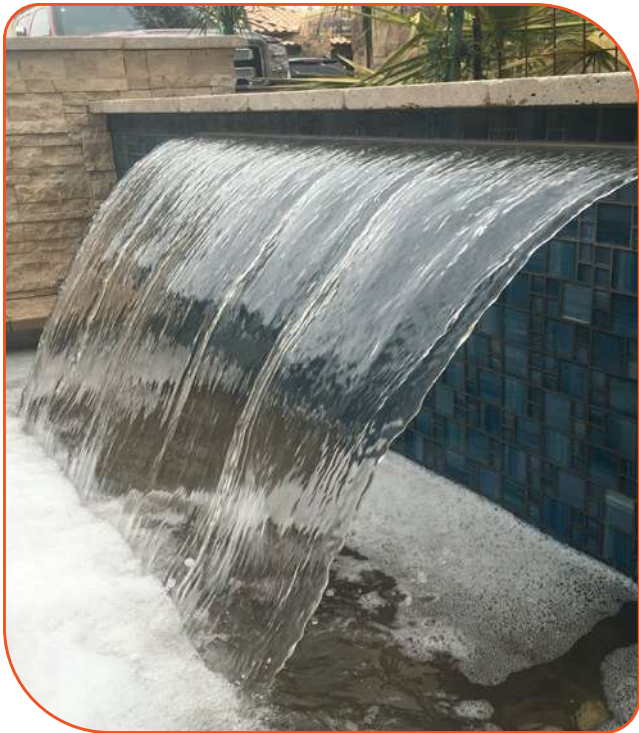
PURE FLOW WATERFALL

The Pure Flow waterfall is engineered to flow based on pressure. The result is a beautifully thick sheet of water that can flow up to 3' into your pool.

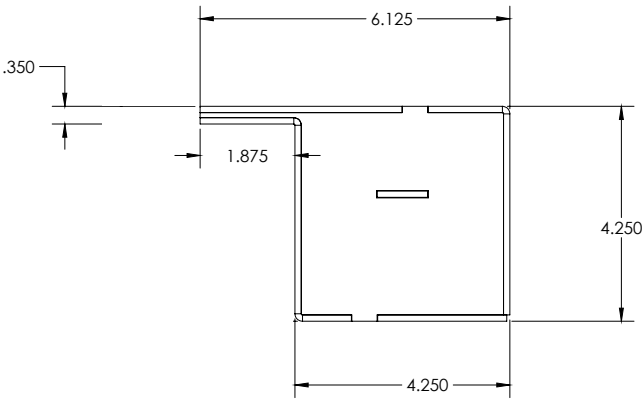
Constructed of marine grade stainless steel that is 1/8" and 1/4" thick, you will never again worry about warping or caving. The waterfall has an integrated mechanism that breaks up and slices debris to help prevent clogs. The Pure Flow waterfall is the next level of pool waterfall engineering.

PRODUCT FEATURES

- Projection up to 3'
- Constructed of Marine Grade Stainless Steel
- No Warping or Caving
- Integrated Debris Destruct
- Not recommended for saltwater pools. For salt, use CMP Natural Wonders Waterfalls



STAINLESS STEEL



ORDERING GUIDE

BOBÉ P/N		DESCRIPTION
PF-12		12" PURE FLOW WATERFALL
PF-24		24" PURE FLOW WATERFALL
PF-36		36" PURE FLOW WATERFALL
PF-48		48" PURE FLOW WATERFALL

Pure Flow Waterfalls are available in Stainless steel only. Stainless steel not recommended for salt water environments.

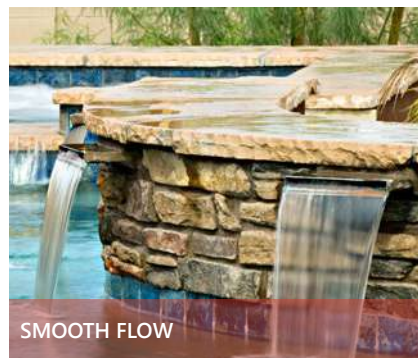
SCUPPERS

Scuppers create a whole new sense of design and style in a pool. This is a water feature that is designed to be seen!

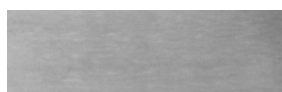
Bobé has the most complete and advanced line of scuppers available, made with the highest quality construction and materials.

PRODUCT FEATURES

- Constructed with heavy gauge materials
- Copper or stainless steel; Powder coat colors available by special order
- All seams are fully welded and fully polished
- No filter or rock trap needed; Scuppers are designed to never clog



COPPER



STAINLESS STEEL

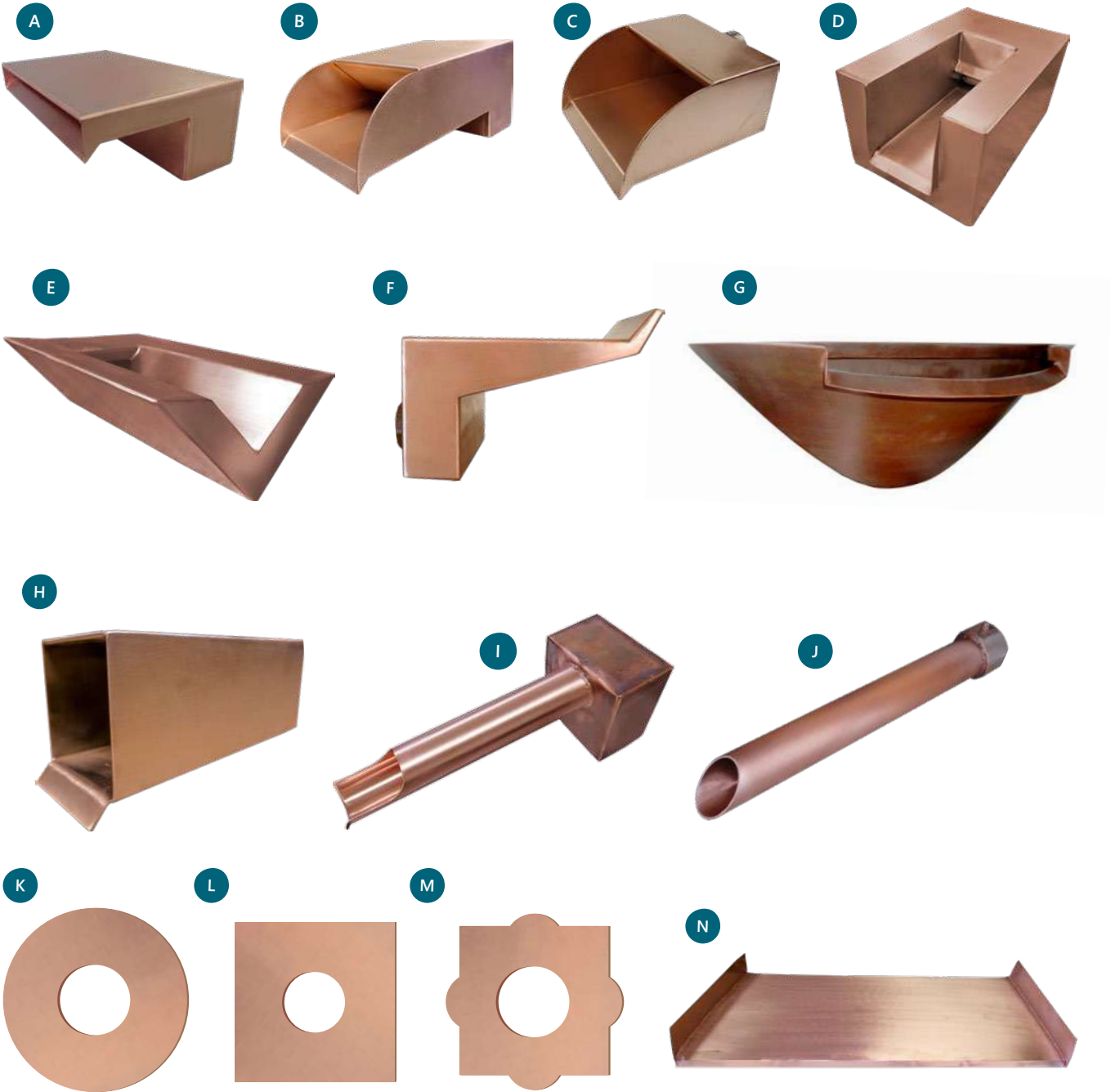


HAMMERED COPPER*

IMPORTANT: See Material Guide on page 49

* Non-Standard Option. May have longer order lead times. Contact for details.

SCUPPERS



SPECIAL ORDER OPTIONS	
POWDER COAT COLOR FINISHES	✓
CUSTOM SIZE	✓
Non-standard orders include customizing fee. Lead times may vary. More info PAGE 46	

SCUPPERS

ORDERING GUIDE

REF	6"	8"	10"	12"	18"	24"	36"	48"	DESCRIPTION	MATERIAL
A	---	SFC-8	---	SFC-12	SFC-18	SFC-24	SFC-36	SFC-48	SMOOTH FLOW SCUPPER	COPPER
A	---	SFS-8	---	SFS-12	SFS-18	SFS-24	SFS-36	SFS-48	SMOOTH FLOW SCUPPER	STAINLESS STEEL
A	---	SFHH-8*	---	SFHH-12*	SFHH-18*	SFHH-24*	SFHH-36*	SFHH-48*	SMOOTH FLOW SCUPPER	HAMMERED COPPER*
B	SFRC-6	SFRC-8	---	SFRC-12	---	SFRC-24	SFRC-36	SFRC-48	SMOOTH FLOW RADIUS SCUPPER	COPPER
B	SFRS-6	SFRS-8	---	SFRS-12	---	SFRS-24	SFRS-36	SFRS-48	SMOOTH FLOW RADIUS SCUPPER	STAINLESS STEEL
B	SFRHH-6*	SFRHH-8*	---	SFRHH-12*	---	SFRHH-24*	SFRHH-36*	SFRHH-48*	SMOOTH FLOW RADIUS SCUPPER	HAMMERED COPPER*
C	RC-6	RC-8	---	RC-12	---	RC-24	RC-36	RC-48	RADIUS SCUPPER	COPPER
C	RS-6	RS-8	---	RS-12	---	RS-24	RS-36	RS-48	RADIUS SCUPPER	STAINLESS STEEL
C	RHH-6*	RHH-8*	---	RHH-12*	---	RHH-24*	RHH-36*	RHH-48*	RADIUS SCUPPER	HAMMERED COPPER
D	US-6	US-8	US-10	US-12	---	---	---	---	U-SHAPE SCUPPER	COPPER
D	USS-6	USS-8	USS-10	USS-12	---	---	---	---	U-SHAPE SCUPPER	STAINLESS STEEL
D	USHH-6*	USHH-8*	USHH-10*	USHH-12*	---	---	---	---	U-SHAPE SCUPPER	HAMMERED COPPER*
E	WC-6	WC-8	WC-10	WC-12	---	---	---	---	WEDGE SCUPPER	COPPER
E	WS-6	WS-8	WS-10	WS-12	---	---	---	---	WEDGE SCUPPER	STAINLESS STEEL
E	WHH-6*	WHH-8*	WHH-10*	WHH-12*	---	---	---	---	WEDGE SCUPPER	HAMMERED COPPER*
F	---	---	---	AFSC-12	---	AFSC-24	AFSC-36	AFSC-48	ARC FLOW SCUPPER	COPPER
F	---	---	---	AFSS-12	---	AFSS-24	AFSS-36	AFSS-48	ARC FLOW SCUPPER	STAINLESS STEEL
F	---	---	---	AFHH-12*	---	AFHH-24*	AFHH-36*	AFHH-48*	ARC FLOW SCUPPER	HAMMERED COPPER*
G	---	---	---	---	---	CWMPPLP-24	---	---	WALL MOUNTED BOWL	COPPER

REF	1"	1.5"	2"	2.5"	3"	4"	6"	DESCRIPTION	MATERIAL
H	---	---	BSC-2	---	---	BSC-4	BSC-6	BOX SCUPPER	COPPER
H	---	---	BSS-2*	---	---	BSS-4*	BSS-6*	BOX SCUPPER	STAINLESS STEEL
H	---	---	BSHH-2*	---	---	BSHH-4*	BSHH-6*	BOX SCUPPER	HAMMERED COPPER*
I	---	CSC-1.5	CSC-2	---	CSC-3	---	---	CANNON SCUPPER	COPPER
I	---	CSS-1.5	CSS-2	---	CSS-3	---	---	CANNON SCUPPER	STAINLESS STEEL
I	---	CANHH-1.5*	CANHH-2*	---	CANHH-3*	---	---	CANNON SCUPPER	HAMMERED COPPER*
J	RTC-1	RTC-1.5	RTC-2	RTC-2.5	RTC-3	---	---	ROUND TUNNEL SCUPPER	COPPER
J	RTS-1	RTS-1.5	RTS-2	RTS-2.5	RTS-3	---	---	ROUND TUNNEL SCUPPER	STAINLESS STEEL
---	SQTS-1	SQTS-1.5	SQTS-2	---	SQTS-3	---	---	SQUARE TUNNEL SCUPPER	STAINLESS STEEL
K	---	ESCUTCHPTS-1.5R	ESCUTCHPTS-2R	---	ESCUTCHPTS-3R	---	---	ROUND CANNON/TUNNEL ESCUTCHEON	STAINLESS STEEL
K	---	ESCUTCHPTC-1.5R	ESCUTCHPTC-2R	---	ESCUTCHPTC-3R	---	---	ROUND CANNON/TUNNEL ESCUTCHEON	COPPER
L	---	ESCUTCHPTS-1.5SQ	ESCUTCHPTS-2SQ	---	ESCUTCHPTS-3SQ	---	---	SQUARE CANNON/TUNNEL ESCUTCHEON	STAINLESS STEEL
L	---	ESCUTCHPTC-1.5SQ	ESCUTCHPTC-2SQ	---	ESCUTCHPTC-3SQ	---	---	SQUARE CANNON/TUNNEL ESCUTCHEON	COPPER
M	---	ESCUTCHPTS-1.5	ESCUTCHPTS-2	---	ESCUTCHPTS-3	---	---	POINTED CANNON/TUNNEL ESCUTCHEON	STAINLESS STEEL
M	---	ESCUTCHPTC-1.5	ESCUTCHPTC-2	---	ESCUTCHPTC-3	---	---	POINTED CANNON/TUNNEL ESCUTCHEON	COPPER

REF	12" x 12"	18" x 12"	36" x 6"	DESCRIPTION	MATERIAL
N	CSPILLWAY12X12	CSPILLWAY18X12	CSPILLWAY36X6	SPILLWAY SCUPPER	COPPER

* Non-Standard Option. May have longer order lead times. Contact for details.

Stainless steel not recommended for salt water environments. Copper will naturally patina.

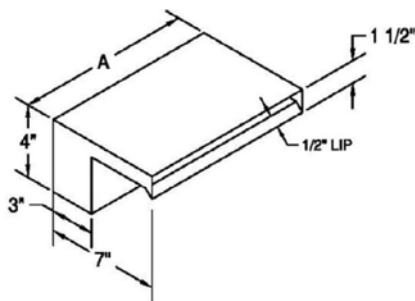
SCUPPER SPECIFICATIONS

- Stainless steel not recommended for saltwater pools. Bonding: All scuppers come with a bonding lug on the back. This is a grounding lug used to ground the scupper.
- Leveling: Scuppers should be installed 1/8in off level in the front. The scupper should be "pointed" down to the pool. This allows the water to flow off the lip and reduces spill back and a "wet" wall.
- All scuppers have a 1.5in NPT female back port threaded inlet (one inlet per foot of spillway).
- Bond Beam: Install either into the beam or on top. If installing in the beam, notch out 1in around the scupper to assist with leveling.
- Escutcheon Sizes: 1.5in has 4.5in diameter; 2in has 6in diameter; 3in has 9in diameter

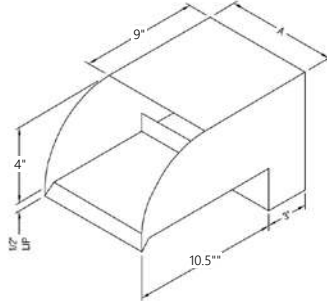
FLOW RATES (PER FOOT)

SMOOTH FL	SMOOTH RAD.	RADIUS	U-SHAPE	BOX	WEDGE	ARC	CANNON	TUNNEL	BOWL
25-30 GPM	25-30 GPM	15-20 GPM	15-20 GPM	15-20 GPM	15-20 GPM	15-20 GPM	15-20 GPM	15-20 GPM	15-10 GPM

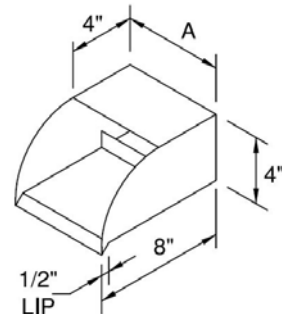
SMOOTH FLOW



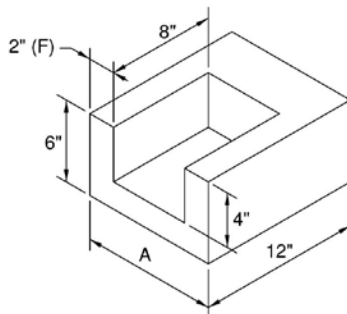
SMOOTH FLOW RADIUS



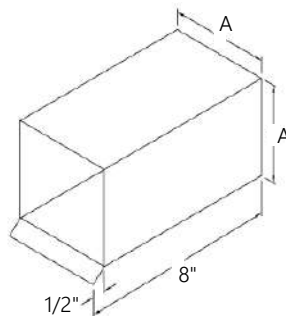
RADIUS



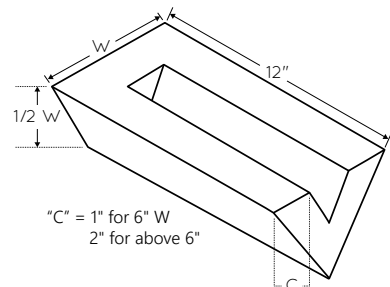
U-SHAPE



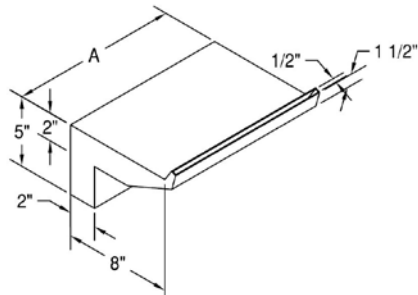
BOX



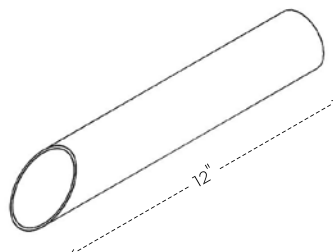
WEDGE



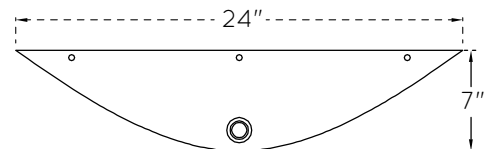
ARC



TUNNEL



WALL MOUNTED BOWL



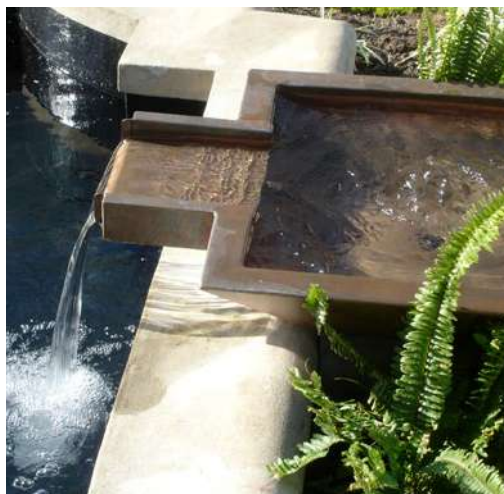
WATER BOWLS

Water bowls are a completely different kind of water feature. Instead of being set in a wall, the feature becomes a part of the landscape. Fill with rock, glass and other material, or simply let it fill and create a natural pool of water.

All Bobé water bowls are constructed from heavy grade materials for strength and durability.

PRODUCT FEATURES

- Extended or Seamless Lip Styles
- Square or Round
- Copper or Stainless Steel; Powder Coat Colors Available by Special Order



EXTENDED LIP

Our original style creates a smooth spout of water.

An extended lip is similar to a scupper on a water bowl.

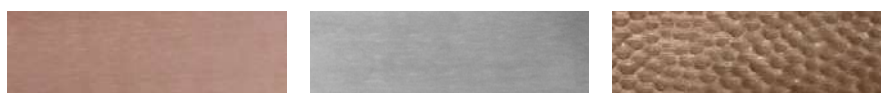
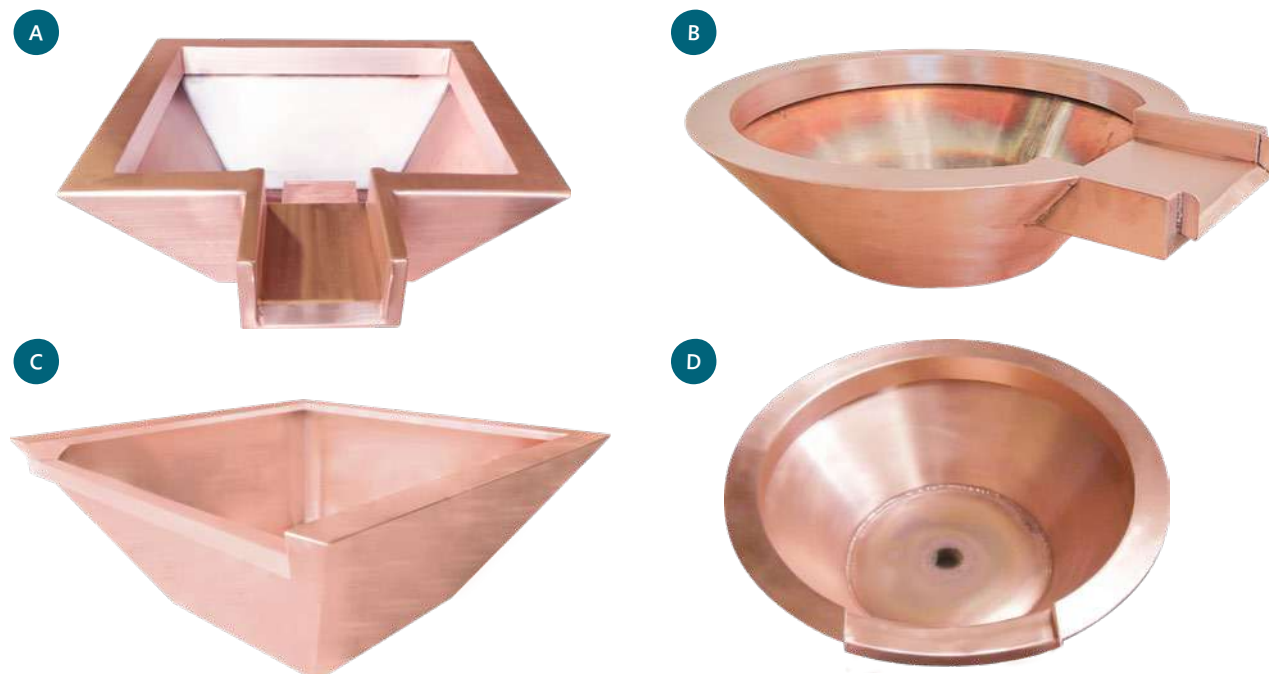
SEAMLESS LIP

Zero front edge creates an infinity overflow in the bowl.

The wide flow is similar to a waterfall, with a large sheet of water.



WATER BOWLS



COPPER

STAINLESS STEEL

HAMMERED COPPER*

IMPORTANT: See Material Guide on page 49

ORDERING GUIDE

REF	24"W × 7"H	24"W × 12"H	28"W × 12"H	32"W × 12"H	36"W × 16"H	SHAPE	LIP	MATERIAL
A	CPPLP-24	CPPM-24	CPPM-28	CPPM-32	CPP-36	SQUARE	EXTENDED	COPPER
A	SPPLP-24	SPPM-24	SPPM-28	SPPM-32	SPP-36	SQUARE	EXTENDED	STAINLESS STEEL
A	PPLPHH-24*	PPMHH-24*	PPMHH-28*	PPMHH-32*	PPHH-36*	SQUARE	EXTENDED	HAMMERED COPPER*
B	RCPLP-24	RCPPM-24	RCPPM-28	RCPPM-32	RCPP-36	ROUND	EXTENDED	COPPER
B	RSPLP-24	RSPPM-24	RSPPM-28	RSPPM-32	RSPP-36	ROUND	EXTENDED	STAINLESS STEEL
B	RPPLPHH-24*	RPPMHH-24*	RPPMHH-28*	RPPMHH-32*	RPPHH-36*	ROUND	EXTENDED	HAMMERED COPPER*
C	CPPLPSL-24	CPPMSL-24	CPPMSL-28	CPPMSL-32	CPPSL-36	SQUARE	SEAMLESS	COPPER
C	SPPLPSL-24	SPPMSL-24	SPPMSL-28	SPPMSL-32	SPPSL-36	SQUARE	SEAMLESS	STAINLESS STEEL
C	PPLPSLHH-24*	PPMSLHH-24*	PPMSLHH-28*	PPMSLHH-32*	PPLSLHH-36*	SQUARE	SEAMLESS	HAMMERED COPPER*
D	RCPLPSL-24	RCPPMSL-24	RCPPMSL-28	RCPPMSL-32	RCPPSL-36	ROUND	SEAMLESS	COPPER
D	RSPLPSL-24	RSPPMSL-24	RSPPMSL-28	RSPPMSL-32	RSPPSL-36	ROUND	SEAMLESS	STAINLESS STEEL
D	RPPLPSLHH-24*	RPPMSLHH-24*	RPPMSLHH-28*	RPPMSLHH-32*	RPPSLHH-36*	ROUND	SEAMLESS	HAMMERED COPPER*

* Non-Standard Option. May have longer order lead times. Contact for details.

SPECIAL ORDER OPTIONS

POWDER COAT COLOR FINISHES



CUSTOM SIZE



Special orders will include customizing fee. Lead times may vary. More info PAGE 48

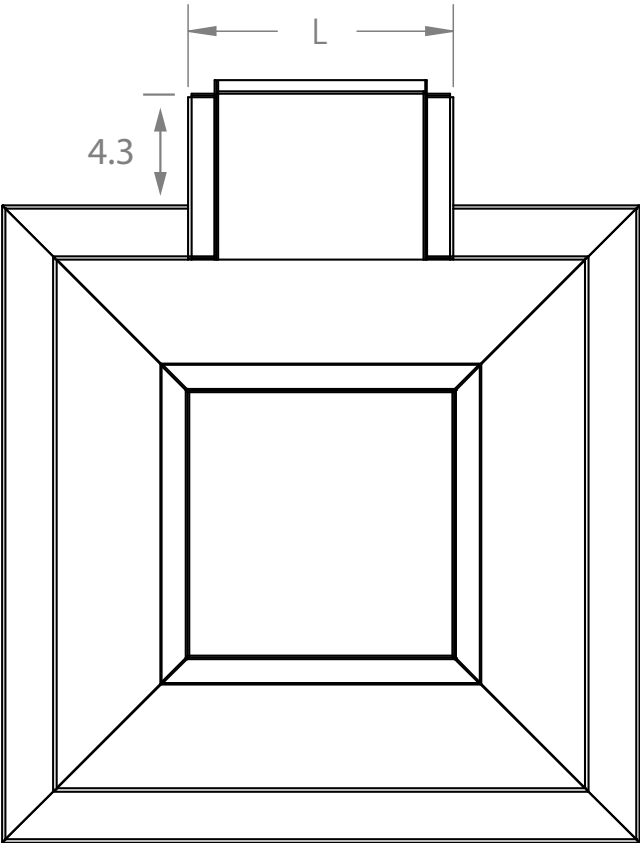
WATER BOWL SPECIFICATIONS

- Bonding: All water bowls come with a bonding lug on the bottom. This is a grounding lug used to ground the water bowl.
- Copper will naturally patina. The patina protects the metal and creates a unique color and style for every installation. For more information on patina & care see page 49All water bowls have a 1.5in female threaded bottom port inlet
- Bottom measurement is equal to 1/2 bowl width (Ex: 24" bowl has 12" base)

FLOW RATES

24"W × 7"H	24"W × 12"H	28"W × 12"H	32"W × 12"H	36"W × 16"H
15-20 GPM	15-20 GPM	15-20 GPM	20-25 GPM	20-25 GPM

DIMENSIONS



SPILLWAY LIP SIZE (L)			
24"	28"	32"	36"
10" WIDE	11" WIDE	12" WIDE	14" WIDE

Stainless steel not recommended for salt water environments. Copper will naturally patina.



Fire



ARTISAN SERIES WATER + FIRE 24

BUILDER SERIES WATER + FIRE 26

FIRE POTS 30

FLIGHT SERIES™ 32

DIY KITS 33

FIRE TABLES 36

FIRE PITS 37

BOWL MEDIA 38

PARTS & ACCESSORIES 40



BOBÉ FIRE TECHNOLOGY

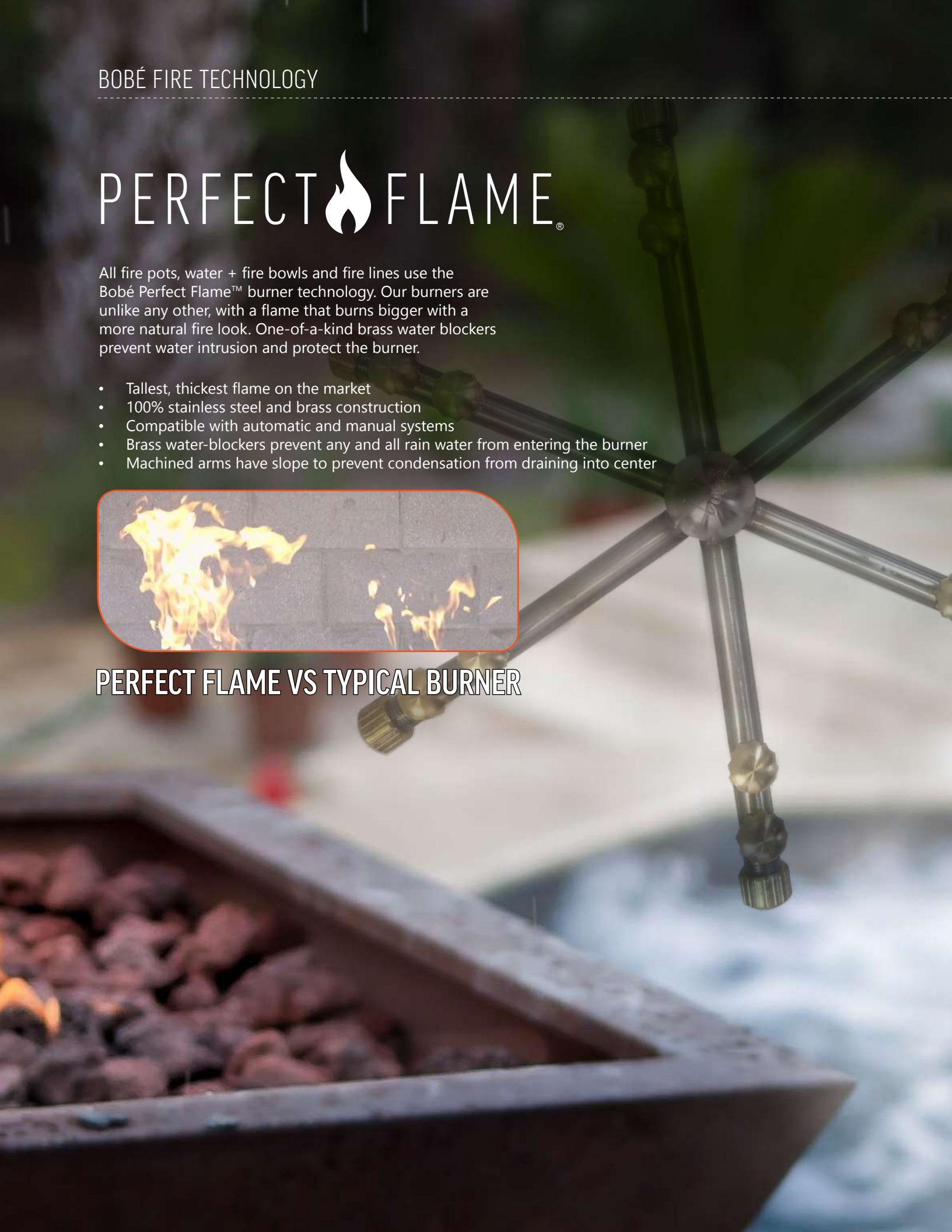
PERFECT FLAME[®]

All fire pots, water + fire bowls and fire lines use the Bobé Perfect Flame™ burner technology. Our burners are unlike any other, with a flame that burns bigger with a more natural fire look. One-of-a-kind brass water blockers prevent water intrusion and protect the burner. Machined arms have slope to prevent condensation from draining into center.

- Tallest, thickest flame on the market
- 100% stainless steel and brass construction
- Compatible with automatic and manual systems
- Brass water-blockers prevent any and all rain water from entering the burner
- Machined arms have slope to prevent condensation from draining into center



PERFECT FLAME VS TYPICAL BURNER



ARTISAN SERIES WATER + FIRE BOWLS

The original combination of water and fire is really two bowls in one! A center bowl contains the media and fire element. This sits inside of the larger, outer bowl. Water flows completely around the fire in a "moat" style and then flows over the edge.

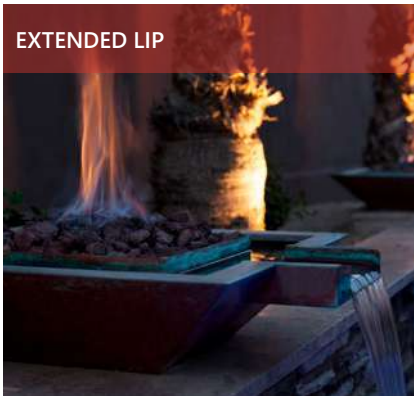
Bobé bowls are hand constructed by skilled artisans. Each bowl is built from heavy grade material, fully TIG welded and polished.

PRODUCT FEATURES

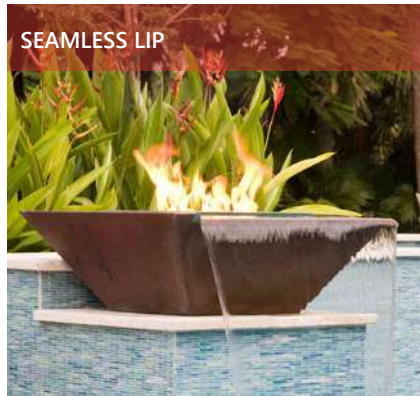
- Available in three different lip styles: Extended, Seamless and 360 Seamless
- Perfect Flame Burner
- Square or Round Shapes
- Automatic Ignition or Manual Key Valve
- Copper or Stainless Steel; Powder Coat available by special order



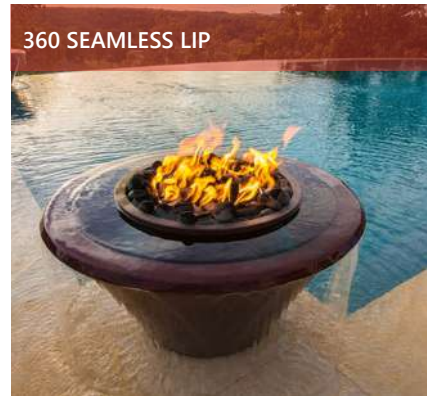
EXTENDED LIP



SEAMLESS LIP



360 SEAMLESS LIP



A



B



C



D



E



F



ARTISAN SERIES WATER + FIRE BOWLS

ORDERING GUIDE

1
SELECT SIZE & OPTIONS

EXAMPLE: CFPLPA-24-XX

2
ADD "-NG" FOR NATURAL GAS

EXAMPLE: CFPLPA-24-NG

ADD "-LP" FOR PROPANE

EXAMPLE: CFPLPA-24-LP

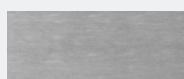
REF	24"W × 7"H	24"W × 12"H	28"W × 12"H	32"W × 12"H	36"W × 16"H	SHAPE	LIP	IGNITION	MATERIAL
A	CPPLPFRA-24-XX	CPPMFRA-24-XX	CPPMFRA-28-XX	CPPMFRA-32-XX	CPPFRA-36-XX	SQUARE	EXTENDED	MANUAL	COPPER
A	SPPLPFRA-24-XX	SPPMFRA-24-XX	SPPMFRA-28-XX	SPPMFRA-32-XX	SPPFRA-36-XX	SQUARE	EXTENDED	MANUAL	STAINLESS STEEL
A	PPLPFRHHA-24-XX*	PPMFRHHA-24-XX*	PPMFRHHA-28-XX*	PPMFRHHA-32-XX*	PPFRHHA-36-XX*	SQUARE	EXTENDED	MANUAL	HAMMERED COPPER*
A	--	--	--	CPPMDFWC-32-XX	CPPDFWC-36-XX	SQUARE	EXTENDED	AUTO	COPPER
A	--	--	--	SPPMDFWC-32-XX	SPPDFWC-36-XX	SQUARE	EXTENDED	AUTO	STAINLESS STEEL
A	--	--	--	PPMDFWHHC-32-XX*	PPDFWHHC-36-XX*	SQUARE	EXTENDED	AUTO	HAMMERED COPPER*
B	RCPLPFRA-24-XX	RCPPMFRA-24-XX	RCPPMFRA-28-XX	RCPPMFRA-32-XX	RCPPFRA-36-XX	ROUND	EXTENDED	MANUAL	COPPER
B	RSPPLPFRA-24-XX	RSPPMFRA-24-XX	RSPPMFRA-28-XX	RSPPMFRA-32-XX	RSPPFRA-36-XX	ROUND	EXTENDED	MANUAL	STAINLESS STEEL
B	RPPLPFRHHA-24-XX*	RPPMFRHHA-24-XX*	RPPMFRHHA-28-XX*	RPPMFRHHA-32-XX*	RPPFRHHA-36-XX*	ROUND	EXTENDED	MANUAL	HAMMERED COPPER*
B	--	--	--	RCPPMDFWC-32-XX	RCPPDFWC-36-XX	ROUND	EXTENDED	AUTO	COPPER
B	--	--	--	RSPPMDFWC-32-XX	RSPPDFWC-36-XX	ROUND	EXTENDED	AUTO	STAINLESS STEEL
B	--	--	--	RPPMDFWHHC-32-XX*	RPPDFWHHC-36-XX*	ROUND	EXTENDED	AUTO	HAMMERED COPPER*
C	CPPLSLFRA-24-XX	CPPMSLFRA-24-XX	CPPMSLFRA-28-XX	CPPMSLFRA-32-XX	CPPSLFRA-36-XX	SQUARE	SEAMLESS	MANUAL	COPPER
C	SPPLSLFRA-24-XX	SPPMSLFRA-24-XX	SPPMSLFRA-28-XX	SPPMSLFRA-32-XX	SPPSLFRA-36-XX	SQUARE	SEAMLESS	MANUAL	STAINLESS STEEL
C	PPLPSLRHHA-24-XX*	PPMSLRHHA-24-XX*	PPMSLRHHA-28-XX*	PPMSLRHHA-32-XX*	PPSLRHHA-36-XX*	SQUARE	SEAMLESS	MANUAL	HAMMERED COPPER*
C	--	--	--	CPPMSLDFWC-32-XX	CPPSLDFWC-36-XX	SQUARE	SEAMLESS	AUTO	COPPER
C	--	--	--	SPPMSLDFWC-32-XX	SPPSLDFWC-36-XX	SQUARE	SEAMLESS	AUTO	STAINLESS STEEL
C	--	--	--	PPMSLDFWHHC-32-XX*	PPSLDFWHHC-36-XX*	SQUARE	SEAMLESS	AUTO	HAMMERED COPPER*
D	RCPLPSLFRA-24-XX	RCPPMSLFRA-24-XX	RCPPMSLFRA-28-XX	RCPPMSLFRA-32-XX	RCPPSLFRA-36-XX	ROUND	SEAMLESS	MANUAL	COPPER
D	RSPPLPSLFRA-24-XX	RSPPMSLFRA-24-XX	RSPPMSLFRA-28-XX	RSPPMSLFRA-32-XX	RSPPSLFRA-36-XX	ROUND	SEAMLESS	MANUAL	STAINLESS STEEL
D	RPPLPSLRHHA-24-XX*	RPPMSLRHHA-24-XX*	RPPMSLRHHA-28-XX*	RPPMSLRHHA-32-XX*	RPPSLRHHA-36-XX*	ROUND	SEAMLESS	MANUAL	HAMMERED COPPER*
D	--	--	--	RCPPMSLDFWC-32-XX	RCPPSLDFWC-36-XX	ROUND	SEAMLESS	AUTO	COPPER
D	--	--	--	RSPPMSLDFWC-32-XX	RSPPSLDFWC-36-XX	ROUND	SEAMLESS	AUTO	STAINLESS STEEL
D	--	--	--	RPPMSLDFWHHC-32-XX*	RPPSLDFWHHC-36-XX*	ROUND	SEAMLESS	AUTO	HAMMERED COPPER*

REF	32"W × 12"H	32"W × 16"H	36"W × 16"H	SHAPE	LIP	IGNITION	MATERIAL
E	RCPPMSLFRA360-32-XX	RCPPSLFRA360-32-XX	RCPPSLFRA360-36-XX	ROUND	360	MANUAL	COPPER
E	RSPPMSLFRA360-32-XX	RSPPSLFRA360-32-XX	RSPPSLFRA360-36-XX	ROUND	360	MANUAL	STAINLESS STEEL
E	RPPMSLDFWHHA360-32-XX*	RPPSLDFWHHA360-32-XX*	RPPSLDFWHHA360-36-XX*	ROUND	360	MANUAL	HAMMERED COPPER*
E	RCPPMSLDFWC360-32-XX	RCPPSLDFWC360-32-XX	RCPPSLDFWC360-36-XX	ROUND	360	AUTO	COPPER
E	RSPPMSLDFWC360-32-XX	RSPPSLDFWC360-32-XX	RSPPSLDFWC360-36-XX	ROUND	360	AUTO	STAINLESS STEEL
E	RPPMSLDFWHHC360-32-XX*	RPPSLDFWHHC360-32-XX*	RPPSLDFWHHC360-36-XX*	ROUND	360	AUTO	HAMMERED COPPER*
F	CPPMSLFRA360-32-XX	CPPSLFRA360-32-XX	CPPSLFRA360-36-XX	SQUARE	360	MANUAL	COPPER
F	SPPMSLFRA360-32-XX	SPPSLFRA360-32-XX	SPPSLFRA360-36-XX	SQUARE	360	MANUAL	STAINLESS STEEL
F	PPMSLDFWHHA360-32-XX*	PPSLDFWHHA360-32-XX*	PPSLDFWHHA360-36-XX*	SQUARE	360	MANUAL	HAMMERED COPPER*
F	CPPMSLDFWC360-32-XX	CPPSLDFWC360-32-XX	CPPSLDFWC360-36-XX	SQUARE	360	AUTO	COPPER
F	SPPMSLDFWC360-32-XX	SPPSLDFWC360-32-XX	SPPSLDFWC360-36-XX	SQUARE	360	AUTO	STAINLESS STEEL
F	PPMSLDFWHHC360-32-XX*	PPSLDFWHHC360-32-XX*	PPSLDFWHHC360-36-XX*	SQUARE	360	AUTO	HAMMERED COPPER*

* Non-Standard Option. May have longer order lead times. Contact for details.



COPPER



STAINLESS STEEL



HAMMERED COPPER*

IMPORTANT: See Material Guide on page 49

SPECIAL ORDER OPTIONS

POWDER COAT COLOR FINISHES



CUSTOM SIZE



Special orders include customizing fee. Lead times may vary. More info PAGE 48

All fire units must be ventilated. Stainless steel not recommended for salt water environments. Copper will naturally patina.

BUILDER SERIES WATER + FIRE BOWLS

Builder Series bowls combine a complete fire pot with a scupper style spout of water. In this design a fire media pan sits at the top of the bowl. Water flows under the pan and out an extended lip at the front of the bowl.

Bobé bowls are hand constructed by skilled artisans. Each bowl is built from heavy grade material, fully TIG welded and polished.

PRODUCT FEATURES

- Perfect Flame Burner
- Square or Round Shapes
- Automatic Ignition or Manual Key Valve
- Copper or Stainless Steel; Powder Coat colors available by special order



ORDERING GUIDE

1

SELECT SIZE & OPTIONS

EXAMPLE: CFPLPA-24-XX

2

ADD "-NG" FOR NATURAL GAS

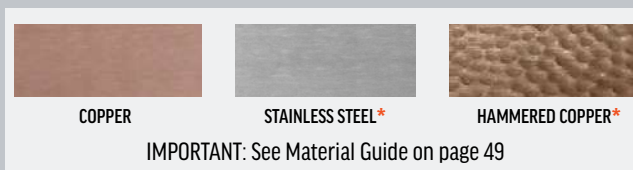
EXAMPLE: CFPLPA-24-NG

ADD "-LP" FOR PROPANE

EXAMPLE: CFPLPA-24-LP

REF	24"W × 7"H	24"W × 12"H	28"W × 12"H	32"W × 12"H	36"W × 16"H	SHAPE	IGNITION	MATERIAL
A	BCPPLPFWA-24-XX	BCPPMFWA-24-XX	BCPPMFWA-28-XX	BCPPMFWA-32-XX	BCPPFWA-36-XX	SQUARE	MANUAL	COPPER
A	BSPLPFWA-24-XX*	BSPPMFWA-24-XX*	BSPPMFWA-28-XX*	BSPPMFWA-32-XX*	BSPPFWA-36-XX*	SQUARE	MANUAL	STAINLESS STEEL*
A	BCPPLPFWHHA-24-XX*	BCPPMFWHHA-24-XX*	BCPPMFWHHA-28-XX*	BCPPMFWHHA-32-XX*	BCPPFWHHA-36-XX*	SQUARE	MANUAL	HAMMERED COPPER*
A	---	---	---	BCPPMFWC-32-XX	BCPPFWC-36-XX	SQUARE	AUTO	COPPER
A	---	---	---	BSPPMFWC-32-XX*	BSPPFWC-36-XX*	SQUARE	AUTO	STAINLESS STEEL*
A	---	---	---	BCPPMFWHHC-32-XX*	BCPPFWHHC-36-XX*	SQUARE	AUTO	HAMMERED COPPER*
B	BRCPLPFWA-24-XX	BRCPPMFWA-24-XX	BRCPPMFWA-28-XX	BRCPPMFWA-32-XX	BRCPPFWA-36-XX	ROUND	MANUAL	COPPER
B	BRSPPLFWA-24-XX*	BRSPPMFWA-24-XX*	BRSPPMFWA-28-XX*	BRSPPMFWA-32-XX*	BRSPFWA-36-XX*	ROUND	MANUAL	STAINLESS STEEL*
B	BRCPLPFWHHA-24-XX*	BRCPPMFWHHA-24-XX*	BRCPPMFWHHA-28-XX*	BRCPPMFWHHA-32-XX*	BRCPPFWHHA-36-XX*	ROUND	MANUAL	HAMMERED COPPER*
B	---	---	---	BRCPPMFWC-32-XX	BRCPPFWC-36-XX	ROUND	AUTO	COPPER
B	---	---	---	BRSPPMFWC-32-XX*	BRSPFWC-36-XX*	ROUND	AUTO	STAINLESS STEEL*
B	---	---	---	BRCPPMFWHHC-32-XX*	BRCPPFWHHC-36-XX*	ROUND	AUTO	HAMMERED COPPER*

* Non-Standard Option. May have longer order lead times. Contact for details.



SPECIAL ORDER OPTIONS

POWDER COAT COLOR FINISHES



CUSTOM SIZE



Special orders include customizing fee. Lead times may vary. More info PAGE 48

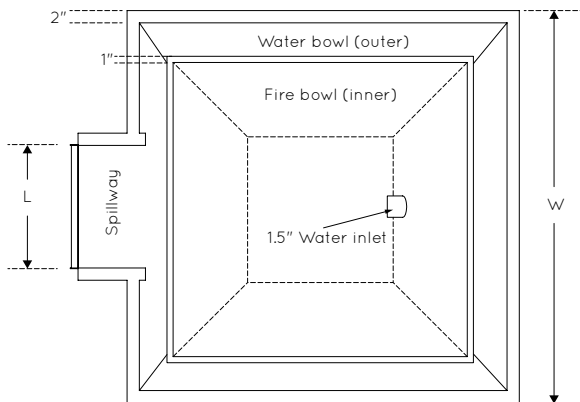
Stainless steel not recommended for salt water environments. Copper will naturally patina. Pots should be installed with drainage for rain water. Lack of drainage can flood gas lines and require service. A cover is recommended for winter or periods of non-use.

WATER + FIRE BOWL SPECIFICATIONS

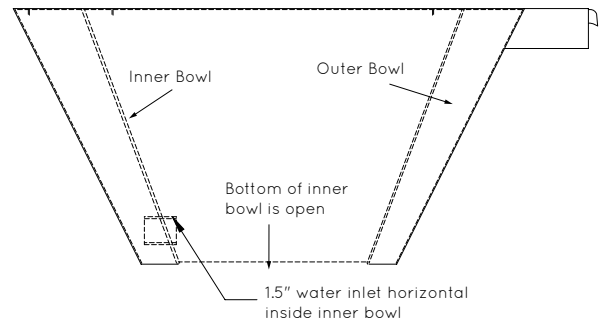
- Bonding: All water + fire bowls come with a bonding lug on the bottom.
- Copper will naturally patina. The patina protects the metal and creates a unique color and style for every installation. For more information on patina & care see page 49
- Artisan Series Water + Fire bowls have a 1.5in female threaded inlets on inner bowl opposite spillway
- All Builder Series bowls have a 1.5in female threaded inlet, constructed of 316 Stainless steel
- The inside bottom of bowl is open for gas and electrical
- For gas and electrical requirements see page 51
- Bottom measurement is equal to 1/2 bowl width (Ex: 24" bowl has 12" base)
- Manual fire pot includes: Perfect Flame burner, Media pan, Key valve kit, Valve, Key, Flange. Street Elbow, 12" Nipple, Reducer, Air mixer (propane only), Built-in vent collar
- Auto fire pot includes: Perfect Flame burner, Media pan, Igniter/sensor, Valve box, Transformer, Regulator, Built-in vent collar, Air mixer (propane only)

FLOW RATES

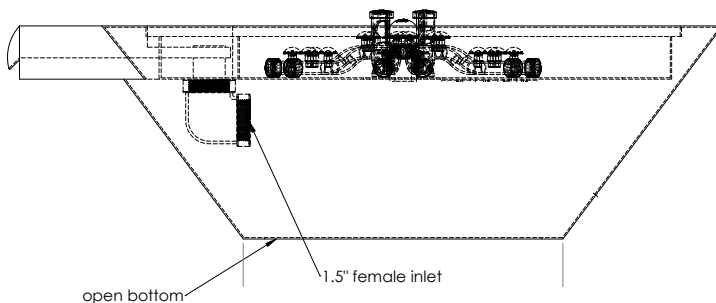
24"W × 7"H	24"W × 12"H	28"W × 12"H	32"W × 12"H	36"W × 16"H
15-20 GPM	15-20 GPM	15-20 GPM	20-25 GPM	20-25 GPM



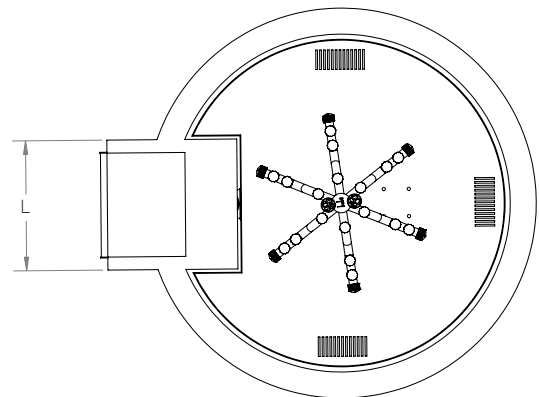
ARTISAN SERIES (TOP VIEW)



ARTISAN SERIES (SIDE VIEW)



BUILDER SERIES (SIDE VIEW)



BUILDER SERIES (TOP VIEW)

SPILLWAY LIP SIZE (L)			
24"	28"	32"	36"
10" WIDE	11" WIDE	12" WIDE	14" WIDE





FIRE POTS

The perfect showcase for the Perfect Flame™. Bobé fire pots are made to be the center of attention.

Each bowl is built from heavy grade material, fully TIG welded and polished.

PRODUCT FEATURES

- Perfect Flame Burner
- Square or Round Shapes
- Automatic Ignition or Manual Key Valve
- Copper or Stainless Steel; Powder Coat available by special order



A



B



COPPER



STAINLESS STEEL



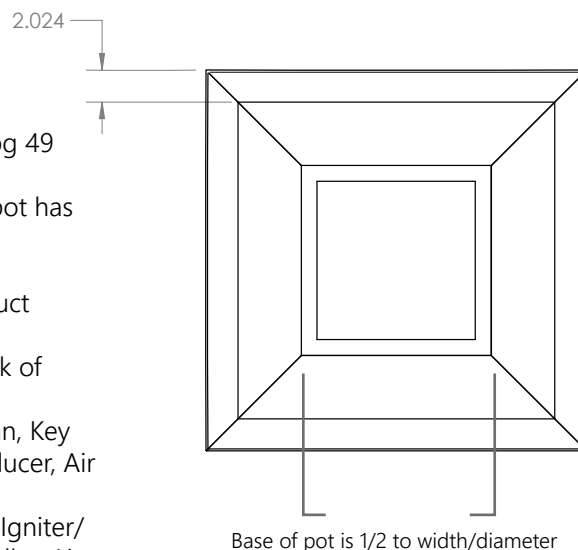
HAMMERED COPPER*

IMPORTANT: See Material Guide on page 49

FIRE POTS

SPECIFICATIONS

- Copper will naturally patina. The patina protects the metal and creates a unique color and style for every installation. For more information on patina & care see pg 49
- The bottom of all fire pots are open for plumbing / gas.
- Bottom measurement is equal to 1/2 pot width (Ex: 24" pot has 12" base)
- For gas and electrical requirements see page 51
- For other specifications and safety information see product instructions.
- Pots should be installed with drainage for rain water. Lack of drainage can flood gas lines and require service.
- Manual fire pot includes: Perfect Flame burner, Media pan, Key valve kit, Valve, Key, Flange, Street Elbow, 12" Nipple, Reducer, Air mixer (propane only), Built-in vent collar
- Auto fire pot includes: Perfect Flame burner, Media pan, Igniter/sensor, Valve box, Transformer, Regulator, Built-in vent collar, Air mixer (propane only)
- DOES NOT INCLUDE: lava rock/colored glass, gas muffler



ORDERING GUIDE

	1 SELECT SIZE & OPTIONS					2		ADD "-NG" FOR NATURAL GAS	ADD "-LP" FOR PROPANE
	EXAMPLE: CFPLPA-24-XX							EXAMPLE: CFPLPA-24-NG	EXAMPLE: CFPLPA-24-LP
REF	24"W × 7"H	24"W × 12"H	28"W × 12"H	32"W × 12"H	36"W × 16"H	SHAPE	IGNITION	MATERIAL	
A	CFPLPA-24-XX	CFPMA-24-XX	CFPMA-28-XX	CFPMA-32-XX	CFPA-36-XX	SQUARE	MANUAL	COPPER	
A	SFPLPA-24-XX	SFPMA-24-XX	SFPMA-28-XX	SFPMA-32-XX	SFPA-36-XX	SQUARE	MANUAL	STAINLESS STEEL	
A	FLPHHA-24-XX*	FPMHHA-24-XX*	FPMHHA-28-XX*	FPMHHA-32-XX*	FPHA-36-XX*	SQUARE	MANUAL	HAMMERED COPPER*	
A	—	CFPMC-24-XX	CFPMC-28-XX	CFPMC-32-XX	CFPC-36-XX	SQUARE	AUTO	COPPER	
A	—	SFPMC-24-XX	SFPMC-28-XX	SFPMC-32-XX	SFPC-36-XX	SQUARE	AUTO	STAINLESS STEEL	
A	—	FPMHHC-24-XX*	FPMHHC-28-XX*	FPMHHC-32-XX*	FPHHC-36-XX*	SQUARE	AUTO	HAMMERED COPPER*	
B	RCFPLPA-24-XX	RCFPA-24-XX	RCFPA-28-XX	RCFPA-32-XX	RCFPA-36-XX	ROUND	MANUAL	COPPER	
B	RSFPLPA-24-XX	RSFPA-24-XX	RSFPA-28-XX	RSFPA-32-XX	RSFPA-36-XX	ROUND	MANUAL	STAINLESS STEEL	
B	RFLPHHA-24-XX*	RFPMHHA-24-XX*	RFPMHHA-28-XX*	RFPMHHA-32-XX*	RFPHHA-36-XX*	ROUND	MANUAL	HAMMERED COPPER*	
B	—	RCFPMC-24-XX	RCFPMC-28-XX	RCFPMC-32-XX	RCFPC-36-XX	ROUND	AUTO	COPPER	
B	—	RSFPMC-24-XX	RSFPMC-28-XX	RSFPMC-32-XX	RSFPC-36-XX	ROUND	AUTO	STAINLESS STEEL	
B	—	RFPMHHC-24-XX*	RFPMHHC-28-XX*	RFPMHHC-32-XX*	RFPHHC-36-XX*	ROUND	AUTO	HAMMERED COPPER*	

* Non-Standard Option. May have longer order lead times. Contact for details.

SPECIAL ORDER OPTIONS	
POWDER COAT COLOR FINISHES	✓
CUSTOM SIZE	✓
Special orders will include customizing fee. Lead times may vary. More info PAGE 48	

All fire units must be ventilated. Vent collars included on all fire pots. A cover is recommended for winter or periods of non-use. Stainless steel not recommended for salt water environments. Copper will naturally patina.

FLIGHT SERIES™

With clean lines and a clear view of the entire fire effect, you can look through the Flight Series' windows to see the flame from its billowing base up 3' to the peak of the flame.

Cor-ten® steel, with its rigid strength and beautiful weathering properties, perfectly complements this unique series.

PRODUCT FEATURES

- Unique, rugged, old world design
- Constructed of solid, extra heavy Cor-ten® Steel
- Round or Square
- 10" tall

A



B



COR-TEN STEEL

IMPORTANT: See Material Guide on page 49

ORDERING GUIDE

1 SELECT SIZE & OPTIONS				2 ADD "-NG" FOR NATURAL GAS	ADD "-LP" FOR PROPANE
EXAMPLE: CFPLPA-24-XX				EXAMPLE: CFPLPA-24-NG	EXAMPLE: CFPLPA-24-LP
REF	24"	28"	32"	SHAPE	IGNITION
A	FLIGHTA-24-XX*	FLIGHTA-28-XX*	FLIGHTA-32-XX*	SQUARE	MANUAL
A	FLIGHTC-24-XX*	FLIGHTC-28-XX*	FLIGHTC-32-XX*	SQUARE	AUTO
B	RFLIGHTA-24-XX*	RFLIGHTA-28-XX*	RFLIGHTA-32-XX*	ROUND	MANUAL
B	RFLIGHTC-24-XX*	RFLIGHTC-28-XX*	RFLIGHTC-32-XX*	ROUND	AUTO

* Non-Standard Product. May have longer order lead times. Contact for details.

DIY FIRE KITS

Build your own fire feature from scratch. DIY kits come fully assembled with a burner and a pan. Ready to drop in place and run natural or LP gas, manual or automatic ignition.

PRODUCT FEATURES

- Square, Round or Fire Line Pans
- Perfect Flame™ Burner
- Stainless Steel Fire Pan

A



B



C



ORDERING GUIDE

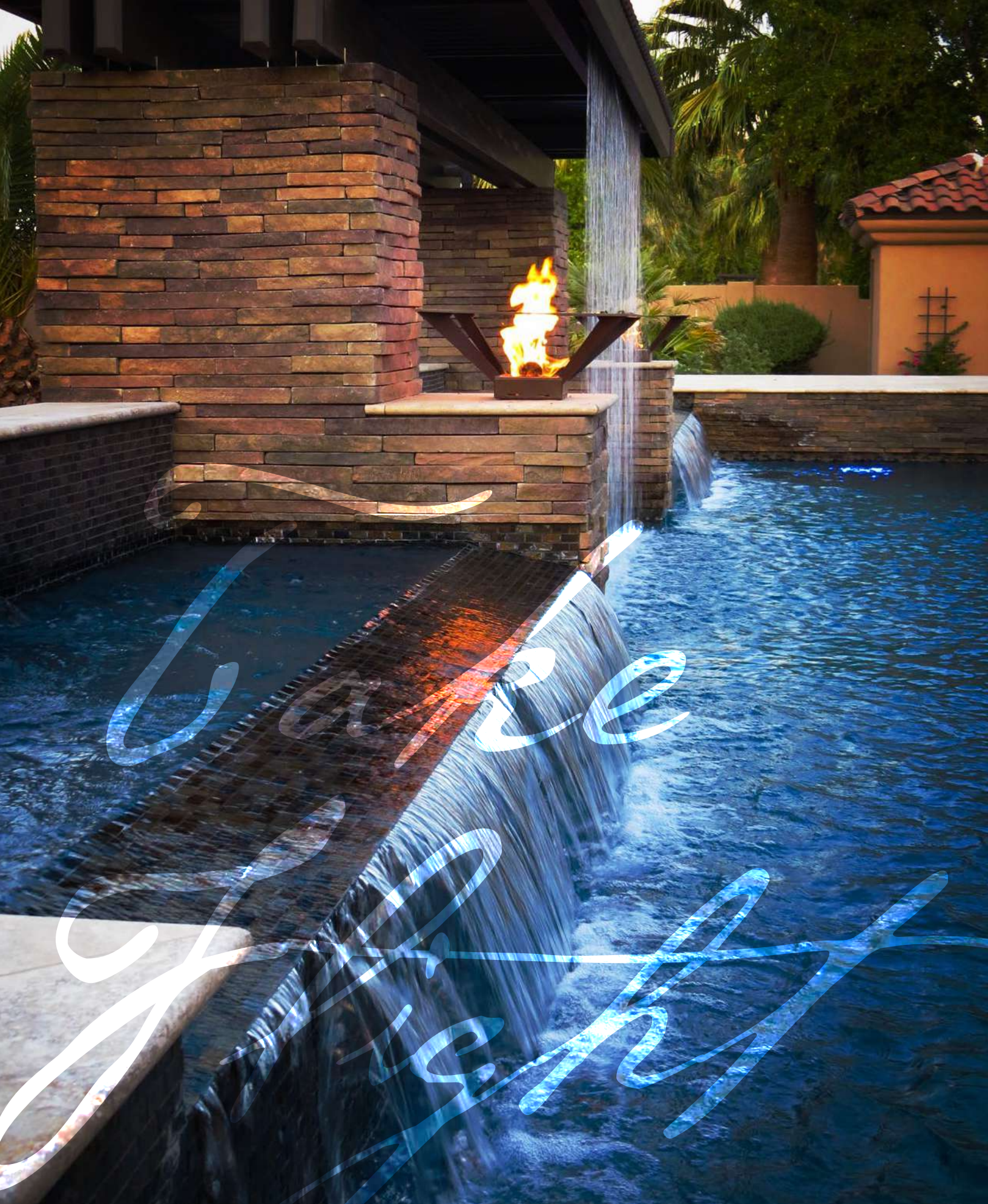
1	SELECT SIZE & OPTIONS	2	ADD "-NG" FOR NATURAL GAS	ADD "-LP" FOR PROPANE
	EXAMPLE: CFPLPA-24-XX		EXAMPLE: CFPLPA-24-NG	EXAMPLE: CFPLPA-24-LP

REF	BOBÉ P/N	DESCRIPTION	PAN	IGNITION	SIZE
A	KITC-24SQ-XX*	PERFECT FLAME BURNER KIT	SQUARE	AUTO	24"
A	KITC-30SQ-XX*	PERFECT FLAME BURNER KIT	SQUARE	AUTO	30"
A	KITC-36SQ-XX*	PERFECT FLAME BURNER KIT	SQUARE	AUTO	36"
B	KITC-24R-XX*	PERFECT FLAME BURNER KIT	ROUND	AUTO	24"
B	KITC-30R-XX*	PERFECT FLAME BURNER KIT	ROUND	AUTO	30"
B	KITC-36R-XX*	PERFECT FLAME BURNER KIT	ROUND	AUTO	36"
C	KITA-36FLPAN-XX	PERFECT FLAME FIRE LINE KIT	RECTANGLE	MANUAL	36" × 5"
C	KITA-48FLPAN-XX	PERFECT FLAME FIRE LINE KIT	RECTANGLE	MANUAL	48" × 5"
C	KITA-60FLPAN-XX	PERFECT FLAME FIRE LINE KIT	RECTANGLE	MANUAL	60" × 5"
C	KITA-72FLPAN-XX	PERFECT FLAME FIRE LINE KIT	RECTANGLE	MANUAL	72" × 5"
C	KITA-84FLPAN-XX	PERFECT FLAME FIRE LINE KIT	RECTANGLE	MANUAL	84" × 5"
C	KITA-96FLPAN-XX	PERFECT FLAME FIRE LINE KIT	RECTANGLE	MANUAL	96" × 5"
C	KITC-36FL-XX*	PERFECT FLAME FIRE LINE KIT	RECTANGLE	AUTO	36" × 5"
C	KITC-96FL-XX*	PERFECT FLAME FIRE LINE KIT	RECTANGLE	AUTO	96" × 5"
C	KITC-120FL-XX*	PERFECT FLAME FIRE LINE KIT	RECTANGLE	AUTO	120" × 5"

* Non-Standard Option. May have longer order lead times. Contact for details.

All fire units must be ventilated. Stainless steel not recommended for salt water environments.





FIRE TABLES

Set the stage for outdoor entertainment with a table that provides heat and beauty. Featuring our Perfect Flame burner to ensure maximum flame effect. Manually light the burner or sync it with an automated controller and remotely turn it on and off.

PRODUCT FEATURES

- Stainless Steel, Copper or Cor-ten® Steel. Powder Coat available by special order
- Automatic or Manual / Natural Gas or Propane
- 8" Lip/Ledge



COPPER



STAINLESS STEEL



COR-TEN STEEL

IMPORTANT: See Material Guide on page 49

ORDERING GUIDE

1		2			
SELECT SIZE & OPTIONS		ADD "-NG" FOR NATURAL GAS		ADD "-LP" FOR PROPANE	
EXAMPLE: CFPLPA-24-XX		EXAMPLE: CFPLPA-24-NG		EXAMPLE: CFPLPA-24-LP	
48" x 24"	60" x 24"	SHAPE	IGNITION	HEIGHT	MATERIAL
CTBLA-48X24-XX*	CTBLA-60X24-XX*	RECTANGLE	MANUAL	18"	COPPER
STBLA-48X24-XX*	STBLA-60X24-XX*	RECTANGLE	MANUAL	18"	STAINLESS STEEL
STEELBLA-48X24-XX*	STEELBLA-60X24-XX*	RECTANGLE	MANUAL	18"	COR-TEN STEEL
CTBLC-48X24-XX*	CTBLC-60X24-XX*	RECTANGLE	AUTO	18"	COPPER
STBLC-48X24-XX*	STBLC-60X24-XX*	RECTANGLE	AUTO	18"	STAINLESS STEEL
STEELBLC-48X24-XX*	STEELBLC-60X24-XX*	RECTANGLE	AUTO	18"	COR-TEN STEEL

* May have longer order lead times. Contact for details.

All fire units must be ventilated. Stainless steel not recommended for salt water environments. Copper will naturally patina.

SPECIAL ORDER OPTIONS

POWDER COAT COLOR FINISHES



CUSTOM SIZE



Special orders will include customizing fee. Lead times may vary. More info PAGE 48

PREFABRICATED FIRE PIT

Prefabricated fire pit kits are shipped as complete units with a stainless steel body and aluminum prefab structure. The perforated aluminum exterior provides a solid foundation to be covered with brick, stone, tile, or stucco.

PRODUCT FEATURES

- Drop-in fire pit structure only needs to be finished with tile, stone or other material
- Three foot fire pit size
- Prefabricated fire pits are measured by the width of the perforated aluminum structure
- For more fire pit options or to create a custom build, use DIY kits pg33



ORDERING GUIDE

P/N	DESCRIPTION	IGNITION	MATERIAL
FPSSC-36-XX*	36" SQUARE FIRE PIT KIT	AUTO	STAINLESS STEEL/ALUMINUM

* Non-Standard Option. May have longer order lead times. Contact for details.

SPECIAL ORDER OPTIONS

CUSTOM SIZE

Special orders will include customizing fee. Lead times may vary. More info PAGE 48

Pits should be installed with drainage for rain water. Lack of drainage can flood gas lines and require service. A cover is recommended for winter or periods of non-use. All fire units must be ventilated. Stainless steel not recommended for salt water environments.

GLASS & ROCK BOWL MEDIA

Glass and rock add color and individuality that finishes off an installation. All glass is fire rated for use in our products. Different cuts of glass are available in over a dozen different colors.

PRODUCT FEATURES

- Fire-ready glass material - only use approved materials in fire pots and bowls
- All glass is tumbled to remove sharp edges
- Crushed glass: small pieces of colorful broken glass
- Pebbles: totally smooth rounded off pieces of glass
- Mirrored Glass: glass with a reflective finish on one side
- Lava Rock: natural stone media material



BOWL MEDIA

ORDERING GUIDE

REF	BOBÉ P/N	BAG SIZE	COLOR	MATERIAL
A	CGAMB-25*	25LB	AMBER	CRUSHED GLASS
A	CGAMB-50	50LB	AMBER	CRUSHED GLASS
B	CGAM-25	25LB	AQUA MIX	CRUSHED GLASS
B	CGAM-50*	50LB	AQUA MIX	CRUSHED GLASS
C	CGB-22P	22LB	BLACK	GLASS PEBBLES
D	CGB-25	25LB	BLACK	CRUSHED GLASS
D	CGB-50*	50LB	BLACK	CRUSHED GLASS
E	CGBL-22P	22LB	BLUE RASPBERRY	GLASS PEBBLES
F	CGBLBER-22P*	22LB	BLUEBERRY	GLASS PEBBLES
G	CGC-50*	50LB	CLEAR	CRUSHED GLASS
H	CGCB-25*	25LB	CRYSTAL BLUE	CRUSHED GLASS
H	CGCB-50*	50LB	CRYSTAL BLUE	CRUSHED GLASS
I	CGDB-25*	25LB	DARK BLUE	CRUSHED GLASS
I	CGDB-50	50LB	DARK BLUE	CRUSHED GLASS
J	CGOB-25*	25LB	OCEAN BLUE	CRUSHED GLASS
J	CGOB-50*	50LB	OCEAN BLUE	CRUSHED GLASS
K	CGTEAL-50*	50LB	TEAL	CRUSHED GLASS
L	CGSTRAW-22P*	22LB	STRAWBERRY RED	GLASS PEBBLES
M	CGFM-25*	25LB	FUN MIX	CRUSHED GLASS
N	CGLB-25*	25LB	LIGHT BLUE	CRUSHED GLASS
N	CGLB-50	50LB	LIGHT BLUE	CRUSHED GLASS
O	CGREF-25BZ*	25LB	REFLECTIVE BRONZE	MIRRORED GLASS
P	CGREF-25G*	25LB	REFLECTIVE GREEN	MIRRORED GLASS
Q	CGREF-25BK	25LB	REFLECTIVE BLACK	MIRRORED GLASS
R	CGREF-25BL	25LB	REFLECTIVE BLUE	MIRRORED GLASS
S	CGREF-25C	25LB	REFLECTIVE COPPER	MIRRORED GLASS
T	LAVA-20	20LB	LAVA ROCK	3-6" ROCKS

* Non-Standard Option. May have longer order lead times. Contact for details.

FIRE FEATURE PARTS & ACCESSORIES

Replacement parts and accessories for fire products. Replacement pans and burners are sold separately.

REPLACEMENT BURNERS/ PANS			
BOBÉ P/N	DESCRIPTION	PAN	SIZE
SMP-18SQPAN	STAINLESS STEEL MEDIA PAN	SQUARE	18"
SMP-24SQPAN	STAINLESS STEEL MEDIA PAN	SQUARE	24"
SMP-30SQPAN	STAINLESS STEEL MEDIA PAN	SQUARE	30"
SMP-36SQPAN	STAINLESS STEEL MEDIA PAN	SQUARE	36"
SMP-18RPPAN	STAINLESS STEEL MEDIA PAN	ROUND	18"
SMP-24RPPAN	STAINLESS STEEL MEDIA PAN	ROUND	24"
SMP-30RPPAN	STAINLESS STEEL MEDIA PAN	ROUND	30"
SMP-36RPPAN	STAINLESS STEEL MEDIA PAN	ROUND	36"
RING-9	STAINLESS STEEL, PERFECT FLAME BURNER, AUTOMATIC	N/A	9"
RING-16	STAINLESS STEEL, PERFECT FLAME BURNER, AUTOMATIC	N/A	16"
RING-22	STAINLESS STEEL, PERFECT FLAME BURNER, AUTOMATIC	N/A	22"
RING-29	STAINLESS STEEL, PERFECT FLAME BURNER, AUTOMATIC	N/A	29"
RING-35	STAINLESS STEEL, PERFECT FLAME BURNER, AUTOMATIC	N/A	35"

Replacement parts for gas line installation and accessories. Air mixer is included with new LP systems.

GAS COMPONENTS	
BOBÉ P/N	DESCRIPTION
KIT-PROPANE	AIR MIXER FOR LIQUID PROPANE, BRASS
INSTALLKEY	REPLACEMENT KEY FOR MANUAL VALVE
GMSS5-1*	GAS MUFFLER (REDUCES WHISTLE SOUND)
GMS-PROPANE*	COMBINATION GAS MUFFLER + AIR MIXER FOR PROPANE UNITS

Replacement parts and accessories for automatic ignition systems.

AUTO IGNITION SYSTEM COMPONENTS	
BOBÉ P/N	DESCRIPTION
578-C*	HAND HELD REMOTE & RECEIVER (IN-LINE, 120 VAC)
TRANSFORMER-12V*	TRANSFORMER, 12 VOLT, FOR AUTO IGNITOR
VALVEBOXFX*	VALVE BOX FOR AUTO IGNITOR

* Non-Standard Option. May have longer order lead times. Contact for details.

Designer Products

PLANTERS 42

COR-TEN® PLANTERS 44



PLANTERS

Our planters are the perfect match for fire pots and water + fire bowls. Extremely durable, with the same build quality as our other outdoor pots and bowls.

Create an accent that stands out with a unique solid metal outdoor planter. Take advantage of the natural patina style of copper or go for a more modern look with sleek stainless steel.

PRODUCT FEATURES

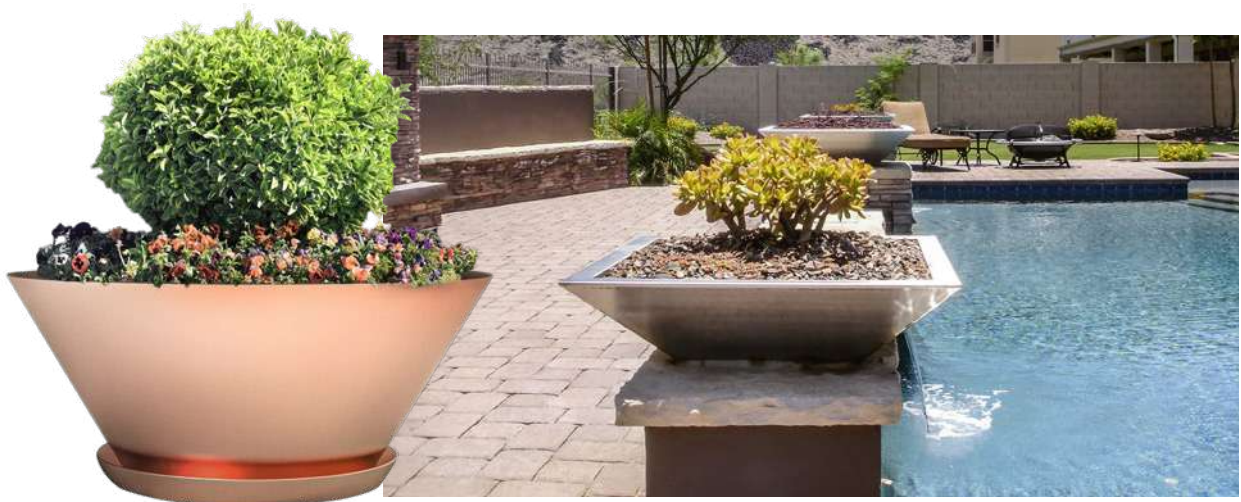
- Square or Round Shapes
- Copper, Hammered Copper or Stainless Steel; Powder Coat colors available by special order
- Optional planter tray sold separately



A



B



COPPER



STAINLESS STEEL



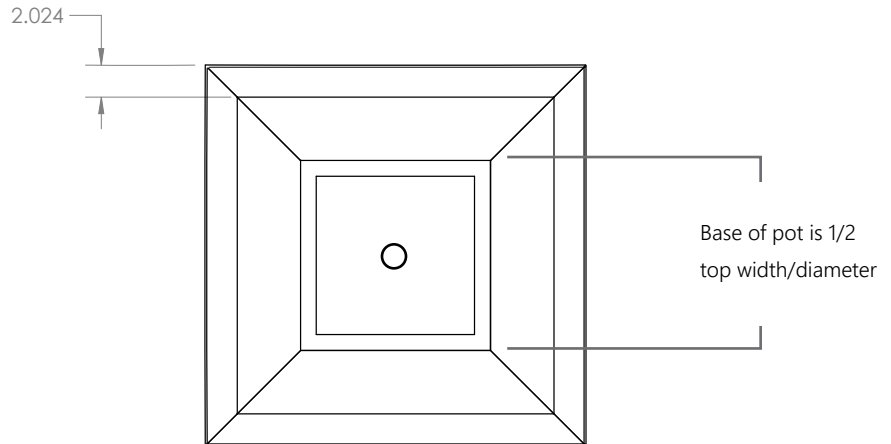
HAMMERED COPPER*

IMPORTANT: See Material Guide on page 49

PLANTERS

SPECIFICATIONS

- The bottom of all pots have a single drain hole
- Planter trays available, sold separately



ORDERING GUIDE

PLANTERS					
REF	28" × 7"	28" × 12"	36" × 16"	SHAPE	MATERIAL
A	SCPLNTLP-28*	SCPLNTM-28*	SCPLNT-32*	SQUARE	COPPER
A	SSPLNTLP-28*	SSPLNTM-28*	SSPLNT-32*	SQUARE	STAINLESS STEEL
A	SPLNTLPHH-28*	SPLNTMHH-28*	SPLNTHH-32*	SQUARE	HAMMERED COPPER*
B	CPLNTLP-28*	CPLNTM-28*	CPLNT-32*	ROUND	COPPER
B	SPLNTLP-28*	SPLNTM-28*	SPLNT-32*	ROUND	STAINLESS STEEL
B	PLNTLPHH-28*	PLNTMHH-28*	PLNTHH-32*	ROUND	HAMMERED COPPER*

PLANTER TRAYS				
REF	14" (FITS 28" POT)	16" (FITS 32" POT)	SHAPE	MATERIAL
—	SCPLNTBS-14*	SCPLNTBS-16*	SQUARE	COPPER
—	SSPLNTBS-14*	SSPLNTBS-16*	SQUARE	STAINLESS STEEL
—	SPLNTBSHH-14*	SPLNTBSHH-16*	SQUARE	HAMMERED COPPER*
—	CPLNTBS-14*	CPLNTBS-16*	ROUND	COPPER
—	SPLNTBS-14*	SPLNTBS-16*	ROUND	STAINLESS STEEL
—	PLNTBSHH-14*	PLNTBSHH-16*	ROUND	HAMMERED COPPER*

* Non-Standard Option. May have longer order lead times. Contact for details.

SPECIAL ORDER OPTIONS	
POWDER COAT COLOR FINISHES	✓
CUSTOM SIZE	✓
Special orders include customizing fee. Lead times may vary. More info PAGE 48	

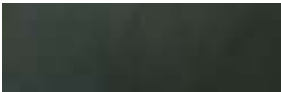
Stainless steel not recommended for salt water environments. Copper will naturally patina.

COR-TEN® PLANTERS

Our Cor-ten® Planters are made from Cor-ten® steel. Cor-ten® naturally develops a brown rust-like appearance that is very unique.

PRODUCT FEATURES

- Solid Cor-ten® steel
- Every planter will develop a unique natural patina
- Unlike "rust", the brown patina actually protects the metal and gives each planter a natural one-of-a-kind appearance



COR-TEN STEEL

IMPORTANT: See Material Guide on page 49

ORDERING GUIDE

BOBÉ P/N	SHAPE	BASE SIZE	HEIGHT
CTENFP-24*	24' × 24" SQUARE	20"	18"
CTENFP-28*	28' × 28" SQUARE	24"	18"

* Non-Standard Option. May have longer order lead times. Contact for details.







References

SPECIAL ORDER OPTIONS 48

CARE & MAINTENANCE 49

GAS & IGNITOR INSTALL 51

WARRANTY 52

TERMS & CONDITIONS 54

SPECIAL ORDER OPTIONS

COLOR & FINISH

POWDER COAT OPTIONS



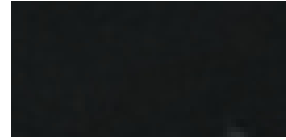
SLATE



TERRA BROWN



WALNUT BROWN



MIDNIGHT BLACK

COR-TEN FINISH OPTIONS



CLEAR COAT

CUSTOM SIZES

- Some products may be ordered with a custom width, length or diameter
- Measurements can be specified when making a special order request

HOW TO SPECIAL ORDER

1. Visit **bobewaterandfire.com/order**
2. Complete a special order request form
3. A Bobé representative will contact you to complete your order
4. Catalog product orders with no modifications no longer require completing an order form

SPECIAL ORDER TERMS & CONDITIONS

- All special orders will include a customizing fee
- Lead times for special orders may vary
- Fees and lead times will be specified at time of order quotation
- Other order terms and conditions may be specified at time of order
- Bobé reserves the right to change available materials and other custom options at any time

MATERIAL CARE & MAINTENANCE

HEAVYWEIGHT COPPER

PATINA: Dark brown to green to blue. All copper products will patina. Patina is a natural process of oxidation where copper reacts to the elements and produces a series of colors that build up in order to protect the copper. The final color can vary widely depending on location, environment and other factors.

WHAT COLOR WILL MY PRODUCT BE?

All products ship in their natural copper state.

Depending on where they are stored or transported, patina may begin to develop. It is **very likely** the color

may change between manufacture and delivery and will continue to patina after installation. Copper can be cleaned after installation to reset the patina process.



CLEANING

- Patina color may vary from piece to piece, even when delivered on the same day. If you prefer to restore the material after installation, a cleaning solution such as TarnX® may be used.
- Hand Prints/Water Spots: Products develop hand prints from handling or water stains from water testing. The natural patina process will cover up the markings as the whole piece begins to darken.

316 MARINE GRADE STAINLESS STEEL

PATINA

Stainless steel does not develop a patina.

CLEANING

- Stainless steel can show water spots and deposits of minerals or other natural substances that appear, orange, white and/or brown. Over-chlorinating the pool or pH out of balance can result in rust.
- Clean using very fine red Scotch-Brite™ cleaning pads.
- In many cases, cleaning over time will greatly reduce reappearance of build-up.



SALTWATER

Stainless steel is not warranted for use in or around salt water.

COR-TEN®

PATINA

Cor-ten® steel is a type of untreated "weathering" steel that will develop a dark, "rusted" appearance. The natural oxidation is a protective layer that strengthens over time and does not require any maintenance or care.

IMPORTANT TO NOTE

- Cor-ten® steel products can stain the surfaces below them.
- Clear coating the steel will not permanently prevent rust or weathering of the metal.



GAS & FIRE PRODUCT SAFETY

Many Bobé brand products involve gas and fire. Safety is the most important thing. Always follow all local codes and ensure professional installation. Always follow all instructions as included with each product. For assistance or questions contact support@c-m-p.com

WARNING: Do not store or use gasoline or flammable vapors and liquids in vicinity of this appliance. Do not install this appliance near any combustibles. A Liquid Propane cylinder not connected for use shall not be stored in the vicinity of this or any other appliance.

WARNING: For outdoor use only. Product is not intended to be a starter for wood or any other combustibles.

WARNING: Installation must be performed by a licensed professional. Improper installation, adjustment, alteration, service or maintenance can cause injury or property damage. Installer must follow all local codes as well as National Fuel Gas Code, ANSI Z223.1.

CAUTION: If you smell gas, shut off the gas to the appliance and extinguish any open flame. If the odor lingers keep away from appliance and immediately call gas supplier or fire department. Do not leave any flame unsupervised.

DANGER: Carbon Monoxide Hazard: This appliance can produce carbon monoxide which has no odor. Using it in an enclosed space can cause serious injury or death. Never use this appliance in an enclosed space such as a camper, tent, car or home.

CAUTION: HOT! DO NOT TOUCH. SEVERE BURNS MAY RESULT. CLOTHING IGNITION MAY RESULT. Glass and other surfaces are hot during operation and cool-down. CAREFULLY SUPERVISE children near this appliance. Alert children and adults to hazards of high temperatures.

ADHERE TO ALL LOCAL CODES CONCERNING INSTALLATION AND OPERATION.

- Test for gas leaks prior to use.
- Verify correct gas fuel type. Never use an alternative fuel, including bio-fuel, ethanol, lighter fluid or any other fuel.
- Installation must be performed by licensed gas piping professional
- When pit is not in use, turn off gas and/or power to prevent unwanted start-up.
- The use of a cover when not in operation is recommended
- Verify gas shut off is located outside of the fire enclosure.
- An approved gas valve or keyed valve shall be installed upstream of the unit and located in an accessible area that is within 5ft from the unit

GAS & IGNITOR INSTALLATION REFERENCE

BTU RATINGS

PERFECT FLAME™ FIRE RING BURNERS				PERFECT FLAME™ FIRE LINES BURNERS			
SIZE	FEMALE THREADED INLET SIZE	MANUAL BTU	AUTOMATIC BTU	SIZE	FEMALE THREADED INLET SIZE	MANUAL BTU	AUTOMATIC BTU
9" FIRE RING	1/2"	21 K	28 K	29" FIRE LINE	1/2"	126 K	126 K
16" FIRE RING	1/2"	63 K	70 K	35" FIRE LINE	1/2"	140 K	140 K
22" FIRE RING	1/2"	105 K	112 K	48" FIRE LINE	3/4"	154 K	154 K
29" FIRE RING	3/4"	147 K	154 K	61" FIRE LINE	3/4"	168 K	168 K
35" FIRE RING	3/4"	189 K	196 K	74" FIRE LINE	3/4"	182 K	182 K
42" FIRE RING	3/4"	231 K	238 K	87" FIRE LINE	3/4"	196 K	196 K
				100" FIRE LINE	3/4"	210 K	210 K
				113" FIRE LINE	3/4"	224 K	224 K
				126" FIRE LINE	TWO, 3/4"	336 K	336 K
				134" FIRE LINE	TWO, 3/4"	364 K	364 K
				146" FIRE LINE	TWO, 3/4"	392 K	392 K

GAS PRESSURE

GAS TYPE	WATER COLUMN
LIQUID PROPANE (LP)	8.5 - 11" WC
NATURAL GAS (NG)	3.5 - 7" WC

NOTE: CHECK WITH YOUR GAS SUPPLIER TO VERIFY GAS FLOWS AND PRESSURES AVAILABLE AT THE LOCATION OF YOUR INSTALLATION. IN MANY CASES UTILITY COMPANIES WILL INSTALL LARGER METERS AT NO CHARGE TO ACCOMMODATE LARGER FLOWS.

AUTOMATIC IGNITION ELECTRICAL REQUIREMENTS

- Auto ignition requires minimum 12.6 volts DC, up to 36 Volts DC at the transformer
- The included transformer steps down to 12.6 V DC
- Installer should check voltage after installation to ensure proper values

WARRANTY

PRODUCT WARRANTY:

All Bobé Water & Fire brand products have been tested and inspected for proper performance and defects prior to shipment from our plant(s) to the original purchaser of any products manufactured by:

Custom Molded Products, LLC
3101 N 29th Ave
Phoenix, AZ 85017

This warranty is only valid to the original consumer of the product. This warrants all manufactured products of Bobé Water & Fire when properly assembled, installed, cleaned and maintained to be free from defective material and workmanship for a period of up to 3 years from the date of purchase based on the component schedule listed below:

Provided that the Bobé Water & Fire components fail or become defective during the warranty period, except as a result of weather, negligence, improper installation, use or care shall be replaced or repaired at our option, without charge on the product within each component's warranty period.

- A. The Ignition System is warranted for a period of 15 months from the date of shipment or 12 months after installation, whichever occurs first, for defects in materials and workmanship.
- B. The Burners are warranted for a period of 39 months from the date of shipment or 36 months after installation, whichever occurs first, for defects in material and workmanship.
- C. The Gas Valves are warranted for a period of 15 months from the date of purchase or 12 months after installation for defects in material and workmanship.
- D. The Electronics are warranted for a period of 15 months from the date of purchase or 12 months after installation, whichever occurs first, for defects in material and workmanship.
- E. All Bobé Water & Fire products are warranted for structural integrity for a period of 15 months from the date of shipment or 12 months after installation, whichever occurs first, for defects in material and workmanship.

Bobé Water & Fire Products are manufactured and sold by Custom Molded Products (CMP).

THE FOREGOING IS THE COMPLETE WARRANTY FOR PRODUCTS MANUFACTURED BY CUSTOM MOLDED PRODUCTS. AND SUPERSEDES ALL OTHER WARRANTIES AND REPRESENTATIONS, WHETHER ORAL OR WRITTEN. ANY IMPLIED WARRANTIES LAST ONLY FOR THE DURATION OF THE WARRANTY PERIODS LISTED ABOVE.

IN THE EVENT PRODUCTS ARE ALTERED OR REPAIRED WITHOUT EXPRESSED WRITTEN CONSENT BY CMP, ALL WARRANTIES ARE VOID.

EXCLUSIONS OF WARRANTY:

- Freight to and from Custom Molded Products (CMP) for any product returned for warranty.
- Damage due to insufficient or excessive electrical/water/gas supply is not covered by this warranty
- Damage due to improper installation is not covered by this warranty
- Powder coated finishes are not covered by this warranty unless defective out of the box prior to installation
- Stainless steel, though stain resistant, is not guaranteed against mineral build up or rust.
- Costs incurred that are not authorized in advance by Custom Molded Products (CMP).
- This warranty certification does not cover stone, tile, stucco, brick or any other building material that is not resistant to water, copper, stainless steel or aluminum.
- Damages or expenses which might be incurred in removal and replacement are not covered under this warranty
- Corrosion, patina or other natural reactions of metals, are not covered by this warranty

WARRANTY

- Any defects due to acts of God, misuse, abuse, accident, ice damage, alteration, misapplication, vandalism, improper maintenance and/or service is not covered under this warranty
- Damage caused by improper use of chemicals and storage near chemicals is not covered by this warranty
- Damage due to improper water chemistry is not covered by this warranty
- Damage due to improperly grounded products is not covered by this warranty
- Damage due to cleaning with non-recommended solutions is not covered by this warranty

IN NO EVENT SHALL THE LIABILITY OF BOBÉ WATER & FIRE PRODUCTS EXCEED THE AMOUNT ORIGINALLY INVOICED FOR THE SPECIFIED PRODUCT BY CMP.

IN NO EVENT SHALL CMP BE LIABLE FOR ANY INCIDENTAL, CONSEQUENTIAL, SPECIAL, DIRECT, INDIRECT, PUNITIVE OR EXEMPLARY DAMAGES, HOWEVER CAUSED, WHETHER BASED UPON CONTRACT, NEGLIGENCE, STRICT LIABILITY IN TORT, OR ANY OTHER LEGAL THEORY.

Some states do not allow the exclusion or limitation of incidental, special or consequential damages, so the above exclusion may not apply.

Obligations of Customer

BECAUSE BOBÉ WATER & FIRE PRODUCTS ARE HAND CRAFTED BY ARTISANS; PRODUCT DIMENSIONS, UNIFORMITY, AND FEATURES MAY VARY SLIGHTLY FROM PRODUCT TO PRODUCT. PRODUCTS SHOULD BE INSPECTED FOR UNIFORMITY AND DIMENSIONAL CONFORMANCE BEFORE INSTALLING, MOUNTING, OR PUTTING INTO OPERATION. PRODUCTS DEEMED NON-CONFORMING AFTER INSTALLATION AND/OR OPERATION ARE NOT COVERED UNDER THIS WARRANTY.

- The customer is responsible for routine cleaning and maintenance on all Bobé Water & Fire surfaces to ensure longevity of product life. (See Cleaning Guide)
- The customer is liable for maintaining proper water chemistry to ensure product life
- Installation: Installation of all Bobé Water & Fire products must be in conformance with all local, state and federal regulations.
- Should be installed by a licensed contractor, electrician and/or gas fitter where applicable
- Grounding: ALL products containing water must be bonded/grounded properly or the warranty is void
- Zinc Anode: It is recommended to install a zinc anode on any Bobé Water & Fire system containing water to reduce rust. Through the electrochemical process of Galvanic corrosion, electrically charged water will bind to the zinc anode and corrode the sacrificial anode instead of your Bobé Water & Fire system. Zinc anodes will need to be replaced regularly.

If Bobé Water & Fire products fail during the warranty period as a result of a non-conformity in material or workmanship, the request for service under this warranty certification must be communicated to technical support at (888-388-2623). If technical support deems the product should be returned for inspection and/ or warranty, merchandise authorization (RMA) number will be issued. The customer is responsible for shipping product back to CMP with a pre-approved RMA number listed on the package. Proof of purchase is required for warranty coverage.

THIS WARRANTY GIVES YOU SPECIFIC LEGAL RIGHTS AND YOU MAY ALSO HAVE OTHER RIGHTS, WHICH MAY VARY FROM STATE TO STATE. **THIS WARRANTY IS NOT TRANSFERABLE.**

TERMS & CONDITIONS

- CONTACT** For written communication, including payment of invoices, please send to:
Custom Molded Products, LLC
36 Herring Road
Newnan, GA 30265
Phone: 770-632-7112
- ORDERING** To ensure prompt and proper shipment, please order by using complete part numbers and descriptions. All telephone orders must be followed up with a written confirmation purchase order.
- TERMS** Standard terms, Net 30 Days
- FREIGHT** FOB: CMP Point of Manufacture and/ or Warehousing
- PAYMENTS**
- Credit Cards may be used to pay at time of order (No Terms)
 - Past due balances (31+ days) will incur a 1.5% service charge
 - Return checks will incur a \$50 service charge - No orders will be shipped to accounts with past due balances
- BILLING ERRORS** Appropriate debits or credits will be applied to accounts or invoices that are in error. Please contact Custom Molded Products if you have questions regarding your invoice or if you think your account is in error.
- NOTICE** CMP reserves the right to change at any time and without notice colors, materials, specifications, part numbers and prices to any products appearing in this publication.

CONTENT & TRADEMARK DISCLAIMERS

CATALOG CONTENT AND SPECIFICATIONS

All illustrations, photographs, product details and specifications in this catalog are current as of available information at the time of printing.

CMP reserves the right to change at any time and without notice colors, materials, specifications, part numbers and prices to any products appearing in this publication.

For regularly updated and the most current product information visit online at www.c-m-p.com and www.bobewaterandfire.com.

TRADEMARKS

The CMP logo, division lockup and everything matters® tagline are registered trademarks of Custom Molded Products, LLC. All CMP Pool Products logos and trademarks are property of CMP. Bobé®, Perfect Flame™, Flight Series™, are trademarks and/or registered trademarks of CMP.

The absence of a trademark, trade name or service mark from the above list does not constitute a waiver of our intellectual property rights concerning that trademark, trade name or service mark. All custom graphics, icons, logos and words listed above are trade names, trademarks or service marks of Custom Molded Products in the United States and/or other countries.

The trademarks and names of other companies and products mentioned and/or referenced herein are the property of their respective owners.

Pool, Spa and Bath industry professionals around the world all depend on CMP. If you are a spa designer, pool builder, bath manufacturer or retail store owner, you can depend on CMP products, service and support. Because when the difference is in the details, everything matters®.



www.c-m-p.com

1-800-733-9060

ORDERS: bobesales@c-m-p.com

PRODUCT INFO: bobecare@c-m-p.com

TECH SUPPORT: support@c-m-p.com

36 HERRING ROAD, NEWNAN, GA 30265

UPDATED 02/20