

# ENERVEX® SCA STEEL CHIMNEY ADAPTER

020.2210.1220 12.20

Product Information

## Use

The SCA steel chimney adapter is used when installing the RSV, RS, RSHT or GSV fan on the top of a single or double wall steel chimney.

## Description

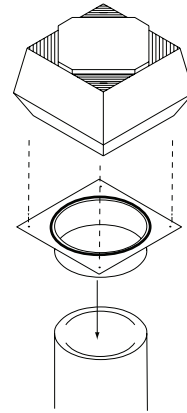
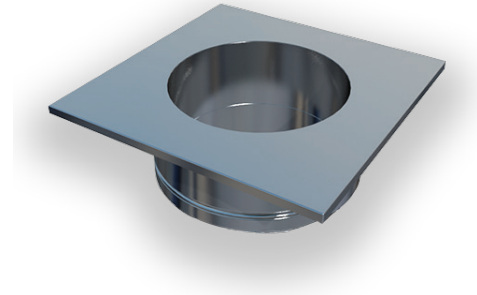
The adapter is designed to slide into the steel chimney for a tight fit. The outer diameter of the collar is 1/8" smaller than the inner diameter of the steel chimney, and has a 5" deep collar.

## Material

The steel chimney adapter is made of 16GA, 316 stainless steel.

## Warranty

2-Year Factory Warranty. Complete warranty conditions are available from ENERVEX Inc.



Specifications are subject to change without notice.

ENERVEX Inc.  
1685 Bluegrass Lakes Parkway  
Alpharetta, GA 30004  
USA

P: 770.587.3238  
F: 770.587.4731  
T: 800.255.2923  
info@enervex.com  
www.enervex.com

**ENERVEX®**   
VENTING DESIGN SOLUTIONS

# ENERVEX®

## SCA STEEL CHIMNEY ADAPTER

020.2210.1220 12.20

Product Information

### Specifications

Fan Type	Flange Dimension	VENT Diameter							
		4"	5"	6"	7"	8"	9"	10"	12"
RSV 009, GSV 009	9.4" x 9.4" (240 x 240 mm)	221.0300.1004	221.0300.1005	221.0300.1006	221.0300.1007	221.0300.1008			
		<b>4"</b>	<b>5"</b>	<b>6"</b>	<b>7"</b>	<b>8"</b>	<b>9"</b>	<b>10"</b>	
RSV 009, GSV 009	12.2" x 12.2" (310 x 310 mm)								221.0300.1010
RSV 012, GSV 012, RSV 200, GSV 200, RS 009		221.0300.2004	221.0300.2005	221.0300.2006	221.0300.2007	221.0300.2008	221.0300.2009	221.0300.2010	
		<b>5"</b>	<b>6"</b>	<b>7"</b>	<b>8"</b>	<b>9"</b>	<b>10"</b>	<b>12"</b>	
RSV 012, GSV 012, RSV 200, GSV 200, RS 009	15.6" x 15.6" (395 x 395 mm)								221.0300.2012*
RSV 014, GSV 014, RSV 250, GSV 250, RS 012, RS 014,		221.0300.3005	221.0300.3006	221.0300.3007	221.0300.3008	221.0300.3009	221.0300.3010	221.0300.3012	
		<b>8"</b>	<b>10"</b>	<b>12"</b>	<b>14"</b>				
RSV 014, GSV 014, RSV 250, GSV 250, RS 012, RS 014	19.7" x 19.7" (500 x 500 mm)				221.0300.3014				
RSV 016, GSV 016 RSV 315, GSV 315, RSV 400, GSV 400, RSV 450, GSV 450, RS 016		221.0300.4008	221.0300.4010	221.0300.4012	221.0300.4014				
		<b>16"</b>	<b>18"</b>						
RSV 014, GSV 014, RSV 250, GSV 250, RS 012, RS 014	22.1" x 22.1" (562 x 562 mm)	221.0300.3016	221.0300.3018						
RSV 016, GSV 016 RSV 315, GSV 315, RSV 400, GSV 400, RSV 450, GSV 450, RS 016		221.0300.4016	221.0300.4018						
		<b>20"</b>	<b>22"</b>	<b>24"</b>	<b>26"</b>				
RSV 016, GSV 016 RSV 315, GSV 315, RSV 400, GSV 400, RSV 450, GSV 450, RS 016	24.5" x 24.5" (622 x 622 mm)	221.0300.4020							
	26.5" x 26.5" (673 x 673 mm)		221.0300.4022						
	28.3" x 28.3" (718 x 718 mm)			221.0300.4024					
	30.3" x 30.3" (770 x 770 mm)				221.0300.4026				

\*SCA has an over-sized flange

Specifications are subject to change without notice.

ENERVEX Inc.  
1685 Bluegrass Lakes Parkway  
Alpharetta, GA 30004  
USA

P: 770.587.3238  
F: 770.587.4731  
T: 800.255.2923  
info@enervex.com  
www.enervex.com

**ENERVEX®**   
VENTING DESIGN SOLUTIONS