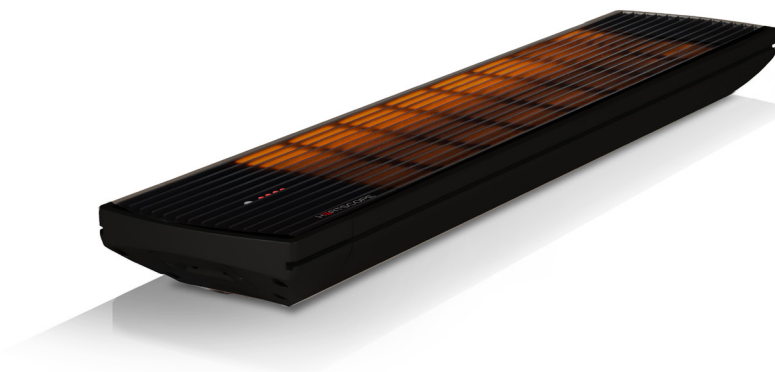
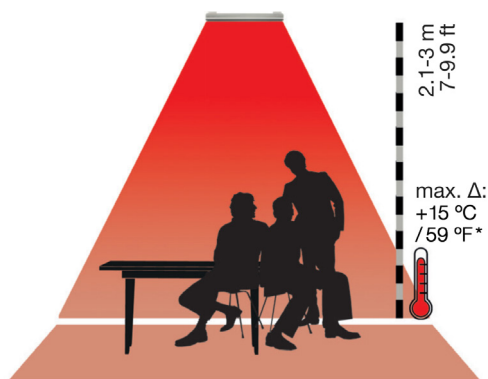


Spot 2800W specifications



	HEATSCOPE® Spot 2800W			
SKU	HTS.SPT.28.WH		HTS.SPT.28.BL	
MPN	MHS-SP2800WT.200	MHS-SM2800WT.200	MHS-SP2800AB.200	MHS-SM2800AB.200
Colors	White		Black	
Dimensions (L x W x H)	884 x 184 x 78 mm / 34.8 x 7.2 x 3.1 in			
Weight (approx)	5 kg / 11 lbs			
Electrical Connection	220 - 240V AC~, 50/60 Hz, 12.17A			
Heat Output	2800W / 9,555 BTU/h			
IP Standard	IP24 (well covered or with optional weather shield)			
Full Heat	15 sec.			
Visible Light	< 600 Lumen			
Included Accessories	Brackets for wall or ceiling mounting, IR Remote Control (Infrared) OR Dual WiFi Smart Switch (w/ App)			
Optional Accessories	Weathershield, Extension Rods, Lift (Lifting System)			
Compatibility	ZigBee Wireless Switch (Remote Control), ZigBee Motion Sensor (extra parts required)			

Heating area



3.2 x 2.5 m / 10.4 x 8.2 ft



Values are approximate. Maximum temperature increase was measured indoors with room temperature at 16°C and heaters mounted in the ceiling at 2.4m height. The heating area and heat intensity can vary based on the mounting height and location (indoor x outdoor).

Disclaimer. All product specifications and data are subject to change without notice and believed to be correct at the time of publication. MAD Design Group (MDG), its affiliates, agents, and employees, and all persons acting on its or their behalf (collectively, "MAD Design Group"), disclaim any and all liability for any errors, inaccuracies or incompleteness contained herein or in any other disclosure relating to any product. MDG disclaims any and all liability arising out of the use or application of any product described herein or of any information provided herein to the maximum extent permitted by law. The product specifications do not expand or otherwise modify MDG's terms and conditions of purchase, including but not limited to the warranty expressed therein, which apply to these products. No license, express or implied, by estoppel or otherwise, to any intellectual property rights is granted by this document or by any conduct of MDG. Customers using or selling MDG products not expressly indicated for use in such applications do so entirely at their own risk and agree to fully indemnify MDG for any damages arising or resulting from such use or sale. Please contact authorized personnel from MDG to obtain written terms and conditions regarding products designed for such applications. Images are indicative only.