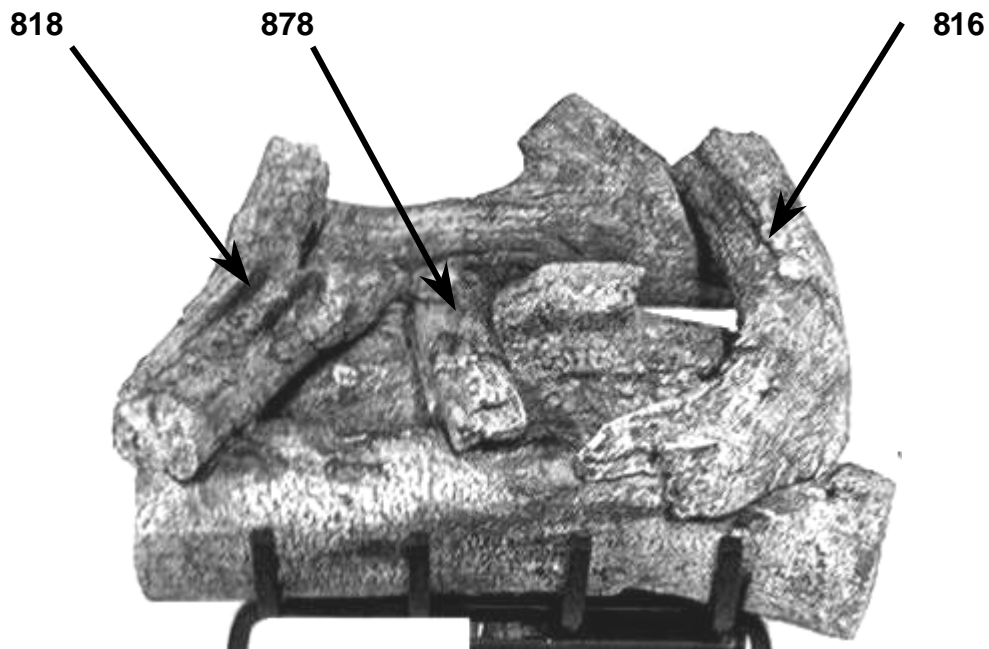
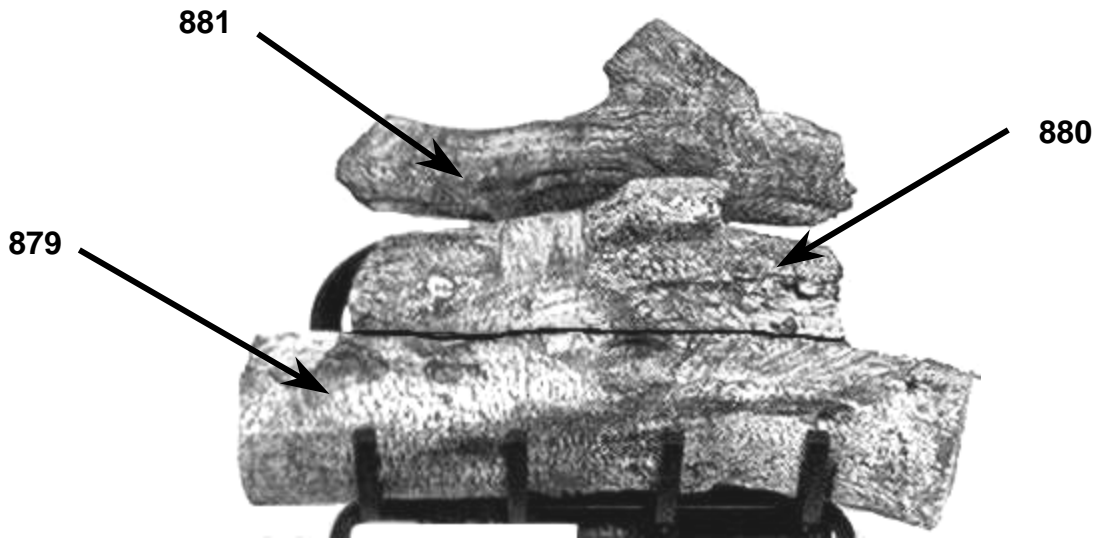


HEATMASTER®
18" Cape Fear Oak Log Placement Instructions
FOR HM2 SERIES BURNER ONLY



WARNING: It is imperative that the flame does not come into contact with the logs. Some adjustment with the logs in the notches may be required in order to ensure that there is no impingement. It is the installers' responsibility to ensure proper log placement and adjustment.

WARNING: Failure to position the parts in accordance with these diagrams or failure to use only parts specifically approved with this appliance will result in property damage or personal injury.

18" Cape Fear Oak Log Part Numbers



879



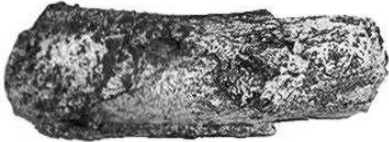
880



881



818

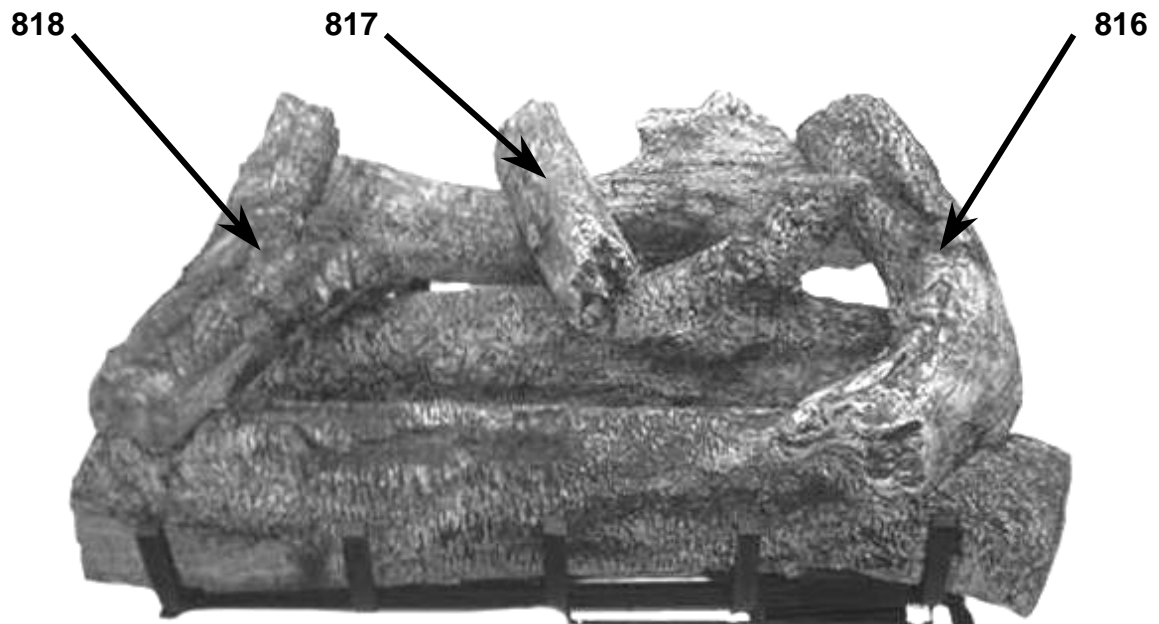
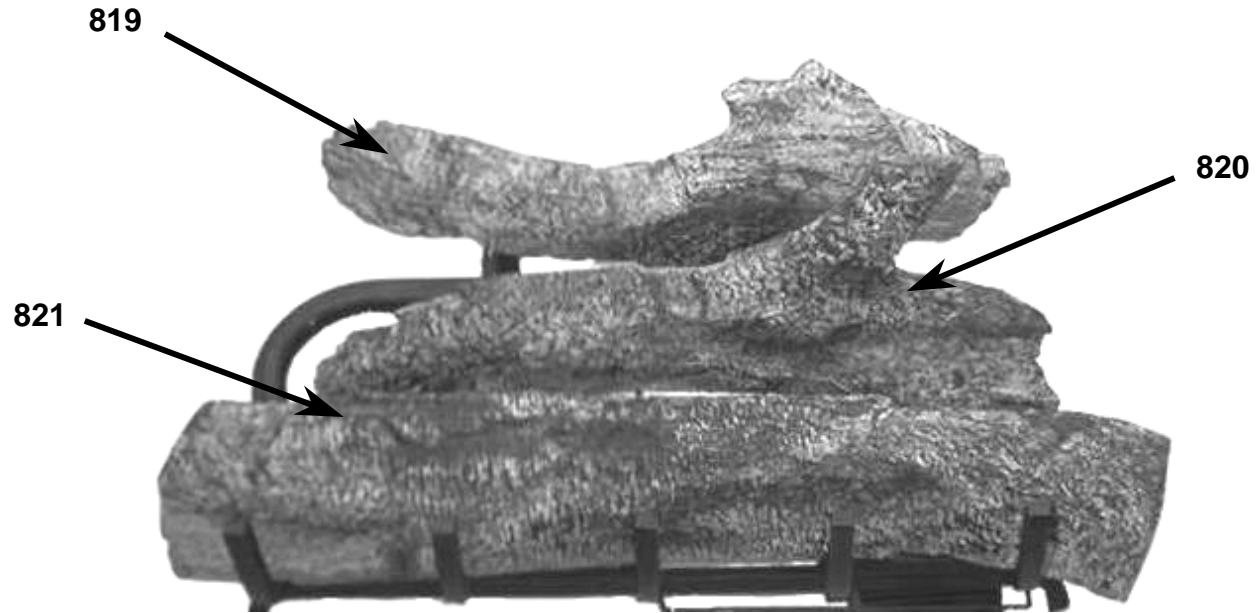


878



816

HEATMASTER®
24" Cape Fear Oak Log Placement Instructions
FOR HM2 SERIES BURNER ONLY



WARNING: It is imperative that the flame does not come into contact with the logs. Some adjustment with the logs in the notches may be required in order to ensure that there is no impingement. It is the installers' responsibility to ensure proper log placement and adjustment.

WARNING: Failure to position the parts in accordance with these diagrams or failure to use only parts specifically approved with this appliance will result in property damage or personal injury.

24" Cape Fear Oak Log Part Number



821



820



819



818

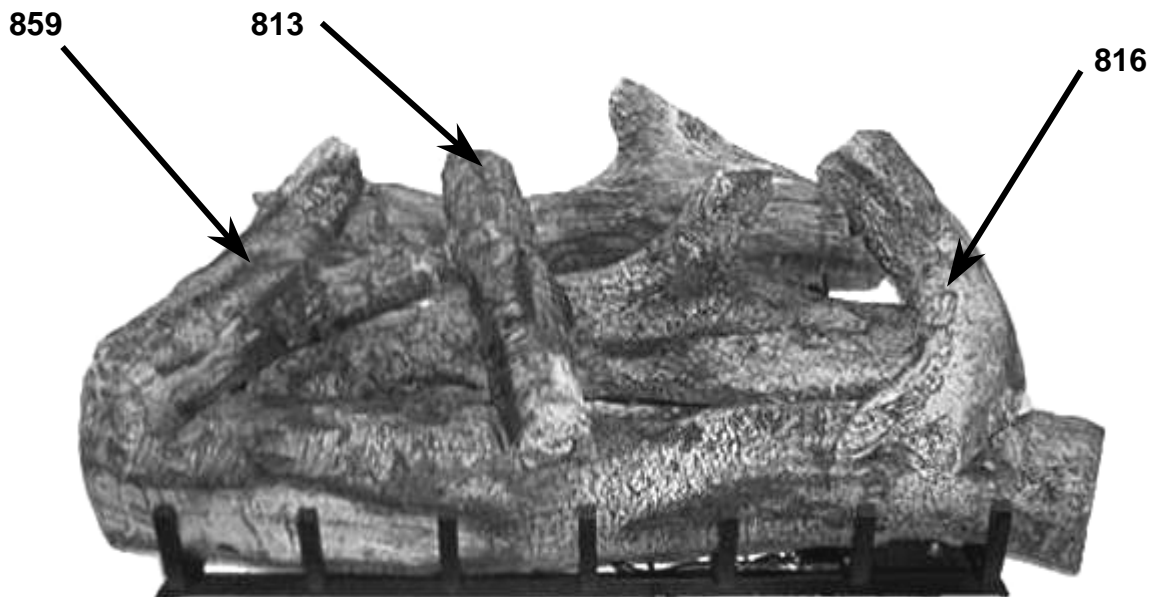
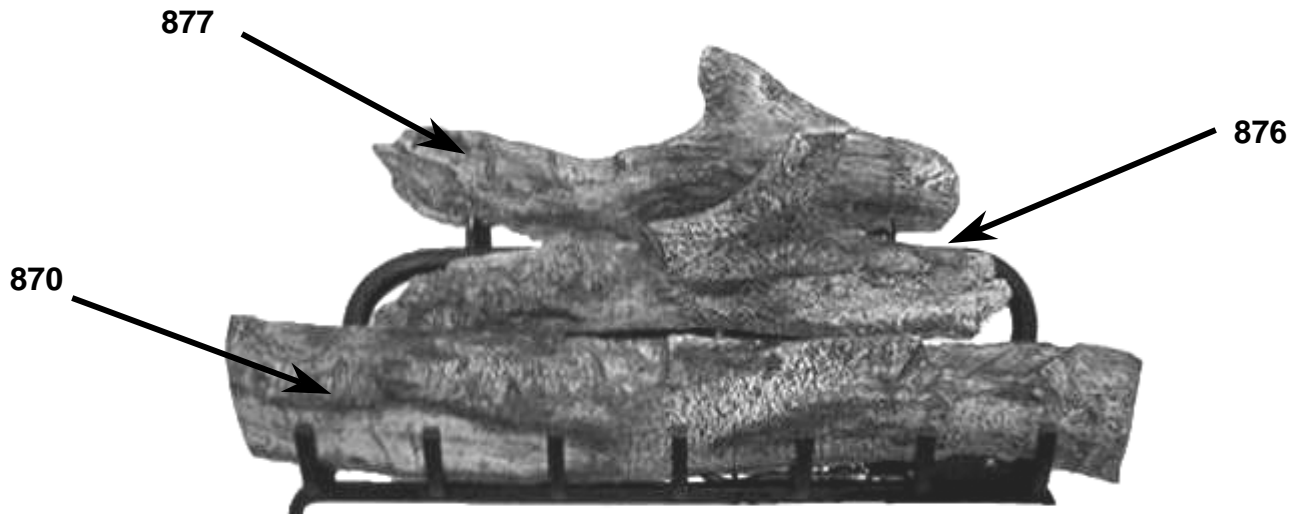


817



816

HEATMASTER®
30" Cape Fear Oak Log Placement Instructions
FOR HM2 SERIES BURNER ONLY



WARNING: It is imperative that the flame does not come into contact with the logs. Some adjustment with the logs in the notches may be required in order to ensure that there is no impingement. It is the installers' responsibility to ensure proper log placement and adjustment.

WARNING: Failure to position the parts in accordance with these diagrams or failure to use only parts specifically approved with this appliance will result in property damage or personal injury.

30" Cape Fear Oak Log Part Numbers



870



876



877



859



816



813