



Linger longer with Barbara Jean

Linear Outdoor Burner Systems

Unit illustrated is a OB72MVN Linear Burner
(Millivolt/Natural Gas), MQG5C Glass Media
(Bronze x6), MQSTONE Decorative Stones.

Burners

Completely flexible, the Barbara Jean Burner is the perfect project for do-it-yourselfers. Five sizes available (24, 36, 48, 72, 96") and for longer lengths simply link them together to create your own custom size!

Plus, a variety of beautiful log, decorative stone and rock options ensure you create the look you want. When you have achieved your desired look, invite family and friends to gather around for a perfect get together outdoors.

A

A

Unit illustrated is a
OB48MAP Linear Burner
(Manual/Propane), MQG5C
Glass Media (Bronze x4),
MQSTONE10 Decorative
Stones (10 pc set x2).

B

Unit illustrated is a
OB48MAP Linear Burner
(Manual/Propane), MQG5C
Glass Media (Bronze x4),
MQSTONE10 Decorative
Stones (10 pc set x2),
OB48WG Wind Guard.

B



Linear Outdoor Burner Systems

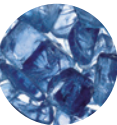
Certified for USA and Canada to ANSI Z21.97-2014, CSA 2.41-2014.
Outdoor Decorative Gas Appliance

24" OB24MAP Linear Burner 24" Manual Valve Propane 40,000 BTU OB24MVN Linear Burner 24" Millivolt Valve Natural Gas 40,000 BTU Dimensions (A) x (B) 26"L x 7 1/2"W 24OB-CKLP Conversion Kit to Propane Millivolt	36" OB36MAP Linear Burner 36" Manual Valve Propane 60,000 BTU OB36MVN Linear Burner 36" Millivolt Valve Natural Gas 60,000 BTU Dimensions (A) x (B) 38"L x 7 1/2"W 36OB-CKLP Conversion Kit to Propane Millivolt	48" OB48MAP Linear Burner 48" Manual Valve Propane 60,000 BTU OB48MVN Linear Burner 48" Millivolt Valve Natural Gas 80,000 BTU Dimensions (A) x (B) 50"L x 7 1/2"W 48OB-CKLP Conversion Kit to Propane Millivolt	72" OB72MVN Linear Burner 72" Millivolt Valve Natural Gas 120,000 BTU Dimensions (A) x (B) 74"L x 7 1/2"W 72OB-CKLP Conversion Kit to Propane Millivolt	96" OB96MVN Linear Burner 96" Millivolt Valve Natural Gas 156,000 BTU Dimensions (A) x (B) 98"L x 7 1/2"W 96OB-CKLP Conversion Kit to Propane Millivolt
--	--	--	---	---

*Manual Valve Systems are shipped as Propane,
NG conversion orifice is included with burner.

Glass Media Required

5 lbs per foot of burner (ie: 24" burner = 10 lbs)



MQG5A
1/2" Cobalt Blue
5 lbs



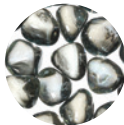
MQG5W
1/2" White
5 lbs



MQG5C
1/2" Bronze
5 lbs



MQG5B
1/2" Black
5 lbs



MQG5ZG
Zircon Glacier Ice
5 lbs

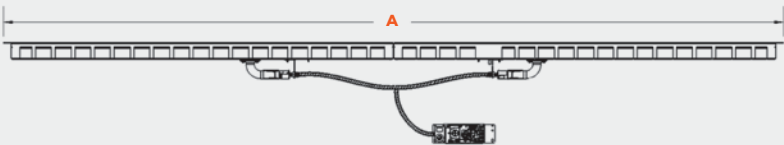


Electronic Sparker
Included with Manual Burners
(AAA Battery not included).

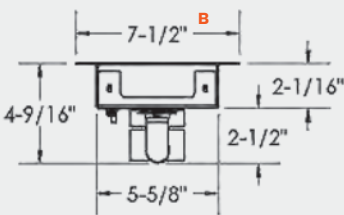
Top View



Side View



End View



All burners are manufactured with Satin Coat steel with a high temperature black paint finish. Satin Coat steel is pretreated with a Zinc coating for corrosion resistance and paint adhesion.

Accessories

The beauty of Barbara Jean Collection is that you can fully customize the look of your unit. Choose convenient accessories and designer options that range from classic driftwood logs to a more contemporary style of ember glass or rocks. Whatever you choose, you'll find the quality and unique style we're certain you'll warm up to.



Optional Accessories



MQRBD3

Log Set: Drift Wood
(5 pc)



MQRBD4

Log Set: Drift Wood
(3 pc)



MQROCK2

Rock Set: Contemporary
(Natural)



MQROCK3

Rock Set: Contemporary
(Multi-Colored)



RBCB1

Cannonballs: Assorted
size and colors (14 pc)



MQSTONE

Decorative Stones
(80 pc)



MQSTONE10

Decorative Stones
(10 pc)



GFRC

Black and Grey Remote
Millivolt (On/Off)



OFP42SA

Spark Assist for
Millivolt Valve
(AA Battery not included)



OBVVM

Universal Valve Bracket
Mount (for Custom
Applications)



Wind Guards recommended for Outdoor Burners



OB24WG

for 24" Burners OB24
(4 pc set)

OB36WG

for 36" Burners OB36
(4 pc set)

OB48WG

for 48" Burners OB48
(4 pc set)

OB72WG

for 72" Burners OB72
(4 pc set)

OB96WG

for 96" Burners OB96
(4 pc set)

Wind Guard:

5 1/2"H



The Barbara Jean Collection maintains a program of continuous testing, refinement and improvements of all its products. Some aspect of units shown here may be changed at any time without notice or obligation.

Certification: Certified for USA and Canada ANSI Z21.97-2014, CSA 2.41-2014, Outdoor Decorative Gas Appliances.

*Components may have to be ordered separately to create a complete unit. Discuss with your local Dealer for clarification.



FOR CALIFORNIA RESIDENTS ONLY:

WARNING! This product can expose you to chemicals including Carbon Monoxide, that is an externally vented by-product of fuel consumption, which is [are] known to the State of California to cause birth defects or other reproductive harm. For more information, visit www.P65Warnings.ca.gov.



Limited Warranty

Crafted entirely in Canada, each Barbara Jean unit is built to the highest standards and made to last.

Printed in Canada | B0504 | 09/18

2340 Logan Ave.
Winnipeg, Manitoba
Canada R2R 2V3

Phone: 204.632.1962
Fax: 204.632.1960

BarbaraJeanCollection.com