



THE
LEXINGTON
HEARTH

KENTUCKY-INSPIRED. EXPERTLY-CRAFTED.
NON-COMBUSTIBLE MANTELS

LEXINGTONHEARTH.COM

NATURE RE-CREATED

THE BEAUTY OF NATURAL MATERIALS IN NON-COMBUSTIBLE MANTELS



Antique Timbers,
Without the Splinters



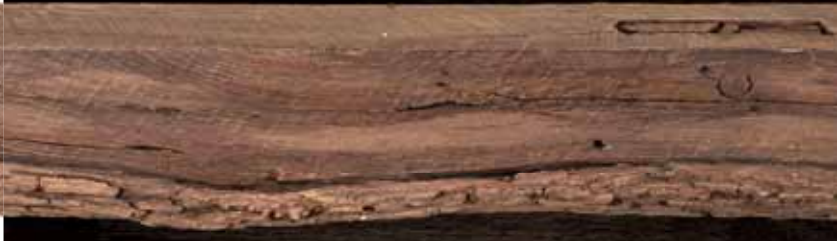
Hand-Painted Color

Each Lexington Hearth mantel is meticulously hand-painted by our incredible coloring artists to capture the natural weathered characteristics and color nuances that can only be acquired with exposure to the elements over many years.

WOOD-INSPIRED MANTELS ARE AVAILABLE IN THREE COLORS: PALE HONEY, WEATHERED GREY, AND MADURO



AVAILABLE IN 5' – 6' LENGTH AND 3 COLORS
HEIGHT, DEPTH AND WEIGHT VARIES BY MODEL



Why Non-Combustible?

Mantels are hand-cast from each mold using our high-definition Burncrete™, a patented non-combustible casting formulation that authentically replicates the rich texture and character details of antique wood and stone.

SAFELY INSTALL A TELEVISION OR ARTWORK ABOVE THE FIREPLACE



Installation

Everything is included for professional installation, including a mounting bracket, fasteners, a touch-up kit, and instructions.



BORN IN THE BLUEGRASS

Lexington Hearth mantels are inspired by old-growth timbers and beams salvaged from historic barns, farms, homes, and cabins across Bourbon Country.



Our designers reference building materials from old Kentucky barns and antique buildings – irreplaceable jewels of architectural history – to create an authentic mantel mold with details such as knots, wood grain, saw marks, and end grains.



GRIST MILL

5' WIDE, 69 LBS. OR 6' WIDE, 86 LBS.
5.75" TALL | 6" DEEP | 3 COLORS

Our Grist Mill mantel is molded directly from a barn beam for an authentically rustic look. Features include deeply weathered woodgrain, tool marks, saw marks, checks & splits, and knots.



PALE HONEY

WEATHERED GREY

MADURO



RICKHOUSE

5' WIDE, 106 LBS. OR 6' WIDE, 141 LBS.
8" TALL | 7.75" DEEP | 3 COLORS

The Rickhouse is reminiscent of aging warehouses used to store barrels of bourbon. Mortice & tenon joinery and saw marks are highlighted in this mantel molded directly from an old-growth timber.



PALE HONEY

WEATHERED GREY

MADURO



CABIN PINE

5' WIDE, 65 LBS. OR 6' WIDE, 75 LBS.
6" TALL | 6" DEEP | 3 COLORS

Featuring a unique transition from square to round edge, the Cabin Pine mantel captures the rustic imperfections of primitive Kentucky craftsmanship with multi-level splits and nail hole details.



PALE HONEY

WEATHERED GREY

MADURO





FLAT SAWN BEAM

5' WIDE, 80 LBS. OR 6' WIDE, 97 LBS.
4" TALL | 8.25" DEEP | 3 COLORS

With a more contemporary aesthetic, the Flat Sawn Beam is reminiscent of the fencing lining the rolling fields of Kentucky horse farms. Saw marks and wood grain details are prominent.



PALE HONEY

WEATHERED GREY

MADURO



HALF ROUND SLEEPER

5' WIDE, 87 LBS. OR 6' WIDE, 110 LBS.
6" TALL | 8" DEEP | 3 COLORS

The distinctive live-edge bark on the sleeper beam offers a rustic charm inspired by barns dotting the Kentucky landscape. We split a full-round beam lengthwise to mold our half-round sleeper mantel.



PALE HONEY

WEATHERED GREY

MADURO



HAYLOFT BEAM

5' WIDE, 82 LBS. OR 6' WIDE, 102 LBS.
5.75" TALL | 8" DEEP | 3 COLORS

Paying tribute to the hayloft above Kentucky horse stables, this mantel beam captures rustic details of the original structures: dowel ends, checking and splits, character knots and nail holes.



PALE HONEY

WEATHERED GREY

MADURO





TOBACCO BARN

5' WIDE, 101 LBS. OR 6' WIDE, 130 LBS.
7.5" TALL | 7.5" DEEP | 3 COLORS

Fashioned from timbers that could have been recovered from an old Kentucky tobacco barn, features include hand-hewn tool marks, deep checking, knots, and growth rings visible on the ends.



PALE HONEY

WEATHERED GREY

MADURO



ROCKFACE

5' WIDE, 82 LBS. OR 6' WIDE, 94 LBS.
4.75" TALL | 8" DEEP | 2 COLORS

Kentucky's land is uniquely shaped by limestone — naturally releasing minerals into our soil, helping horses develop stronger bones and bourbon to age gracefully. Our rough chiseled mantel includes crystalized minerals that reflect light and add sparkle to a fireplace.



TURFWAY TAN



BLUEGRASS FOG



HITCHING POST

3-PIECE SET | 3 COLORS

In a simpler time, horsepower came with a saddle. Homes and businesses across Kentucky had either a hitching post or a hitching rail to tie off horses, preventing wandering. Our 3-piece Hitching Post mantel surround features deep weathered woodgrain, tool marks, checking and splits, character knots, and nail holes, capturing the rustic charm of our Bluegrass past.



PALE HONEY

WEATHERED GREY

MADURO



TOP:

5.75" TALL | 80 LBS.
5.25" DEEP | 78.5" WIDE

LEFT/RIGHT:

56" TALL *CAN BE CUT DOWN TO OTHER SIZES
5.25" DEEP | 5.5" WIDE | 54 LBS.

MANTEL ACCESSORIES



PICTURED: FLAT SAWN CORNER MANTEL (MADURO) WITH A MATTE BLACK DECORATIVE METAL BRACKET.

CORNER MANTELS

Wrap a mantel around one or both sides of the fireplace wall for depth and interest. Each style is available three finishes: PALE HONEY | WEATHERED GREY | MADURO



RICKHOUSE



HAYLOFT BEAM



GRIST MILL

METAL BRACKETS

Conceal the seams from adjoining accessories with forge-inspired metal, available in two finishes: MATTE BLACK | HAMMERED BRONZE



2' EXTENSIONS

RICKHOUSE | TOBACCO BARN
GRIST MILL (PICTURED)
HAYLOFT BEAM
FLAT SAWN



Use 2' extensions to extend or shorten the mantel size to fit your project. Available in three finishes:

PALE HONEY | WEATHERED GREY | MADURO

CORBELS

Add classic character with a set of decorative corbels. Each style is available in the same hand-painted finishes as coordinating mantels.



RUSTIC

IN 3 FINISHES:
PALE HONEY
WEATHERED GREY
MADURO



SAWMILL

IN 3 FINISHES:
PALE HONEY
WEATHERED GREY
MADURO



LIMESTONE

IN 2 FINISHES:
TURFWAY TAN
BLUEGRASS FOG



WALL BOARDS

Rough saw cuts and wood grain are prominently featured in Wall Boards designed to perfectly complement the 3-piece Hitching Post surrounds.

BUCKSKIN TAN (PICTURED)



BRINDLE BROWN



DAPPLE GREY

THE BLUEGRASS COLLECTION

KENTUCKY-INSPIRED, EXPERTLY-CRAFTED,
NON-COMBUSTIBLE MANTELS



GRIST MILL | OAK BEAM
AVAILABLE IN 5' AND 6'

RICKHOUSE | BARK EDGE TIMBER
AVAILABLE IN 5' AND 6'



TOBACCO BARN | HAND-HEWN TIMBER
AVAILABLE IN 5' AND 6'

CABIN PINE | PINE BEAM
AVAILABLE IN 5' AND 6'



HALF ROUND SLEEPER | BARK EDGE
AVAILABLE IN 5' AND 6' TIMBER

HAYLOFT BEAM | HAND-HEWN BEAM
AVAILABLE IN 5' AND 6'



FLAT SAWN BEAM | ROUGH SAWN
AVAILABLE IN 5' AND 6' CEDAR

ROCKFACE | LIMESTONE
AVAILABLE IN 5' AND 6'



HITCHING POST | ROUGH SAWN
AVAILABLE IN ONE SIZE CEDAR
POST SUPPORT HEIGHT
IS CUSTOMIZABLE