

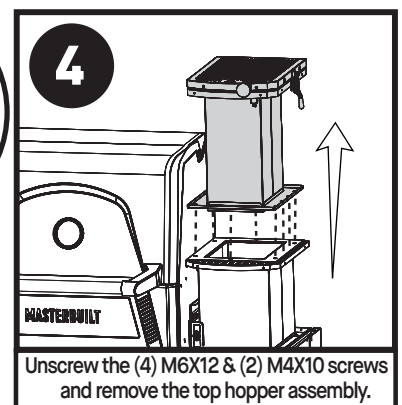
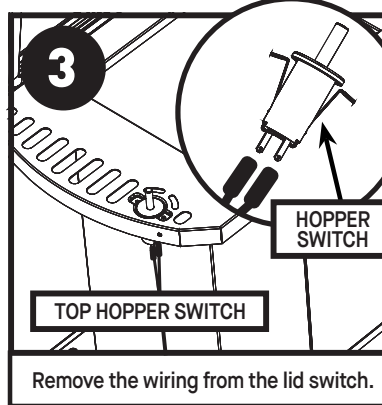
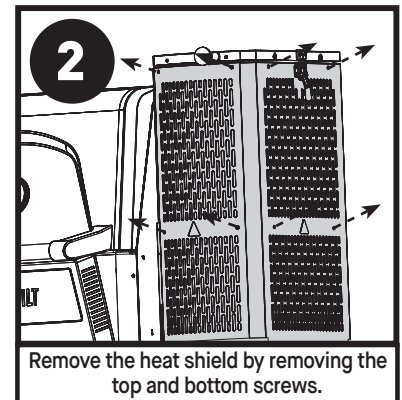
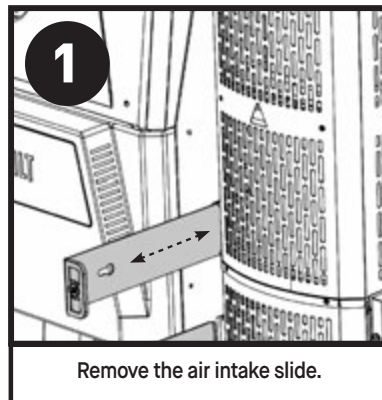
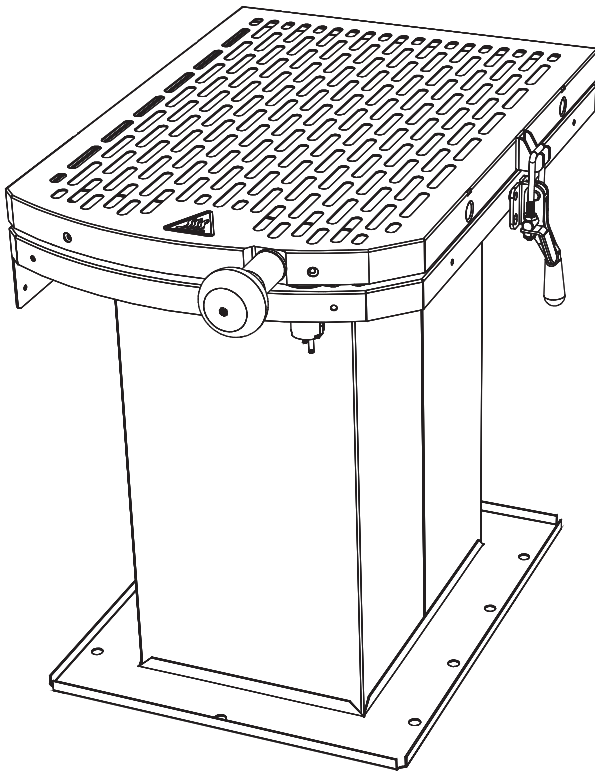
# MASTERBUILT®

## Top Hopper Instruction Sheet

### Gravity Fed Grill CGP24G1D, CGP28G1D, CGP30G1D



- Always remove plug from outlet before servicing your grill.
- Make sure your grill has fully cooled to avoid burns.
- Some components may have sharp edges. Use caution to avoid injury.



#### INSTALLATION:

- Secure the top part of the hopper to the middle by screwing it in with six (6) M6X12 and (4) M4X10 screws see (Step 4).
- Secure wiring to new lid switch see (Step 3).
- Secure the protective heat shield in place on the top and middle sections of the hopper see (Step 2).
- Insert the air intake slides see (Step 1).