

NAPOLEON®

GAS BURNING

GAS BURNING STOVES



napoleonfireplaces.com



Incredible levels of luxury and functionality.

GDS20 - Arlington™	4 - 5
GDS25 - Bayfield™	6 - 7
GDS26 - Castlemore™	8 - 9
GDS60 - Cast Iron Gas Stove	10 - 11
GDS28	12 - 13
GDS50	14 - 15
Napoleon's Outstanding Features	16 - 17
Detailed Specifications.....	18 - 19



GDS25 shown in porcelain enamel winter frost finish with a lorena slate stove top inset



Why Napoleon®?

Making your life easier... Napoleon® gas stoves are designed to provide you absolute comfort and control at the touch of your fingertips. It's that easy. When you install a Napoleon® gas stove, you can rest assured that you will enjoy a lifetime of instant ambiance with reliable performance year after year.

An investment you can count on... Your new Napoleon® gas stove adds value to your home while at the same time giving you uncompromising comfort and a reliable heating source.

Create your personal design statement... Surround yourself with a home environment that makes you feel good, relaxed and proud to reflect your decorating style. A multitude of designer options are available to create the exact statement you have been looking for.

Highest efficiencies, maximum comfort... Years of research, design and testing have enhanced optimum performance allowing Napoleon® products to achieve some of the highest heater rating efficiencies on the market. Napoleon® continuously surpasses industry standards not only in appearance but in efficiency and performance.

Beautiful fires, best flame in the industry... With advanced burner technology and innovative design, Napoleon's flame and exclusive PHAZER® log sets are so realistic it's hard to tell the difference from a real wood burning fire.

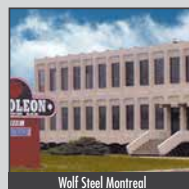
No power? No problem!... We all feel vulnerable when the power goes out. Now you can weather out the storm in the comfort of your own home! A Napoleon® gas stove requires no electricity to light or operate, a built-in millivolt system or electronic ignition with battery back-up ensures reliability even during power failures.

Authorized dealer support network... With over 3,000 reputable authorized dealers across North America, Napoleon® works hard to provide professional, consistent training and technical education to support our dedicated team of professionals.

Outstanding reliable warranty... Each and every Napoleon® gas stove is designed and manufactured to strict quality testing standards and backed by the President's Limited Lifetime Warranty, guaranteed to give you the solid performance you deserve. Napoleon® is registered under the world recognized ISO 9001-2008 quality systems.



Napoleon Appliance Corp.



Wolf Steel Montreal



Wolf Steel USA



Wolf Steel Manufacturing



Wolf Steel Corporate Offices



GDS20 - Arlington™

Compact in Size - Huge in Style

The Arlington™ cast iron gas stove, with its slender, space saving design and 45° venting, is perfect for smaller rooms. The GDS20 is available in painted black or a porcelain enamel Majolica brown finishes and comes standard with a MIRRO-FLAME™ Porcelain Reflective Radiant Panel. Even though small in size, it holds a large PHAZERAMIC™ burner system, PHAZER® log set and brightly glowing ember bed that can be viewed through the European styled ceramic glass viewing area.

GDS20

Up to 20,000 BTU's

50% flame/heat adjustment

19 ¼" w x 25 ¾" h as shown

Natural gas or propane

For more detailed specifications on this unit, see page 18

Options & Accessories



Easy access hidden control panel



45° venting for versatile horizontal or vertical installations



Stove Finishes
Two Colour Options*



F45 & F60 Remote Controls
On/off or Modulating



Solid cast iron, European design





GDS20 shown in painted black finish with a lorena slate stove top inset



MIRRO-FLAME
Porcelain Reflective
Radiant Panel



Optional Stove Top Insets
Three colour options*
(natural stone - will have variances in colour and pattern)



GDS25 - Bayfield™

Your Choice of Three Designer Colours

The Bayfield™ cast iron stove comes in three designer colours that will look great in any home or cottage. The built-in secondary heat exchanger provides excellent heating efficiency and heat retention. Other features include a cost saving electronic ignition with battery back-up, 50% flame/heat adjustment, ceramic glass and an exclusive NIGHT LIGHT™ which creates a warm glow even when the stove is not on.

GDS25

Up to 24,500 BTU's

50% flame/heat adjustment

23 1/2" w x 25 5/8" h as shown

Natural gas or propane

For more detailed specifications on this unit, see page 18

Options & Accessories



Built-in NIGHT LIGHT



Operable double doors open fully, almost flush to the sides



Decorative Screen



Stove Finishes
Three Colour Options*



F45 & F60 Remote Controls
On/off or Modulating



GDS25 shown in porcelain enamel winter frost with a lorena slate stove top inset





GDS25 shown in porcelain enamel Majolica brown with MIRRO-FLAME[®] Porcelain Reflective Radiant Panels and a giallo golden brown stove top inset



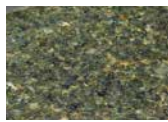
Decorative Sandstone
Brick/Stone Panel



MIRRO-FLAME[®]
Porcelain Reflective
Radiant Panels



Optional Stove Top Inset
Three colour options*
(natural stone - will have variances in colour and pattern)



GDS26 - Castlemore™

More Than Just a Reliable Heating Source

The Castlemore™ cast iron gas stove adds more than just a reliable heating source to your home. With its sleek curves and tall, slender stature, it becomes the ultimate focal point for any room. The GDS26 comes complete with Napoleon's exclusive NIGHT LIGHT™, PHAZERAMIC™ burner system, PHAZER® log set and glowing ember bed, creating a beautiful display of YELLOW DANCING FLAMES®. The classic European design will never go out of style and the heating power will provide a lifetime of enjoyable comfort.

GDS26

Up to 25,000 BTU's

50% flame/heat adjustment

23 5/8" w x 35 1/2" h as shown

Natural gas or propane

For more detailed specifications on this unit, see page 18

Options & Accessories



F45 & F60 Remote Controls
On/off or Modulating



Easily converts from
rear vent to top vent



Stove Finishes
Four Colour Options*



Solid cast iron, European design in painted metallic black finish





GDS26 shown in porcelain enamel summer moss with MIRRO-FLAME Porcelain Reflective Radiant Panels and ubatuba green stove top inset and side panels



Decorative Sandstone
Brick/Stone Panel



MIRRO-FLAME[®]
Porcelain Reflective
Radiant Panels



Optional Stove Top Inset and Side Panels
Three colour options*
(natural stone - will have variances in colour and pattern)



GDS60 - Cast Iron Gas Stove

Solid Performance and Impressive Heating Efficiencies

Napoleon's GDS60 has always been in popular demand for its solid performance and impressive heating efficiencies. The GDS60 comes standard with Napoleon's PHAZER® log set, glowing embers, anti-condensation switch (controls pilot usage for cold climate installations) and electronic ignition with battery back-up. Its fine detailing and elegant cast iron design is a perfect complement to any home.

GDS60

Up to 35,000 BTU's

50% flame/heat adjustment

27" w x 30 1/2" h as shown

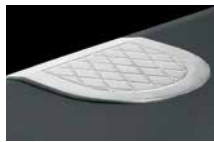
Natural gas or propane

For more detailed specifications on this unit, see page 19

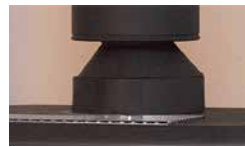
Options & Accessories



Cast Iron Trivet
Painted Black Finish



Cast Iron Trivet
Chrome Plated Finish



B-Vent Adapter Kits
See page 17 for more details



Stove Finishes
Two Colour Options*



Andirons
Painted Black Finish



F45 & F60 Remote Controls
On/off or Modulating



Solid cast iron, European design in porcelain enamel Majolica brown finish





GDS60 shown in painted metallic black finish



Decorative Sandstone
Brick/Stone Panel



GDS28

Dynamic Design, Environmentally Friendly Technology

Good things do come in small packages! If you have limited space but still desire the beauty and convenience of a gas stove... Napoleon's GDS28 is the answer! The GDS28 offers many benefits – a built-in blower, easily accessible control panel, solid body construction, a triple flame burner and a PHAZER® log set with glowing embers creating a beautiful display of YELLOW DANCING FLAMES®. Offering a variable heat range, as high as 30,000 BTU's, this stove may be compact in stature, but not in power!

GDS28

Up to 30,000 BTU's

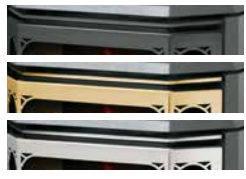
50% flame/heat adjustment

22 1/2" w x 26 3/4" h as shown

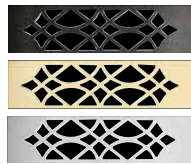
Natural gas or propane

For more detailed specifications on this unit, see page 19

Options & Accessories



Accent Bar
Three Colour Options*



Trivets
Three Colour Options*



B-Vent Adapter Kits
See page 17 for details



Andirons
Two Colour Options*



F45 & F60 Remote Controls
On/off or Modulating



Door
Three Colour Options*



Standard painted metallic black accent bar and trivet





GDS28 shown with painted black door and standard painted black trivet and accent bar



GDS28 shown with satin chrome plated door, trivet and accent bar

GDS50

Sophisticated Heating Technology

This sophisticated gas stove comes complete with a built-in blower, extra large heat exchanger, easily accessible control panel and an advanced high tech, triple burner effect with a "furnace" type 14,000 BTU burner behind the logs. Acting as a "Turbo Boost" for those colder days & nights, it's perfect for colder climates. All of the GDS50 features combined with clean-burning, environmentally friendly technology, makes it the perfect choice to add long-lasting value to your home!

GDS50

Up to 44,000 BTU's

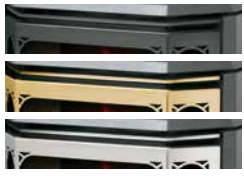
50% flame/heat adjustment

28 1/4" w x 30 3/4" h as shown

Natural gas or propane

For more detailed specifications on this unit, see page 19

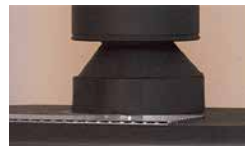
Options & Accessories



Accent Bar
Three Colour Options*



Trivet
Painted Metallic Black Finish



B-Vent Adapter Kits
See page 17 for details



Andirons
Two Colour Options*



F45 & F60 Remote Controls
On/off or Modulating



Door
Three Colour Options*



Standard painted metallic black accent bar and trivet





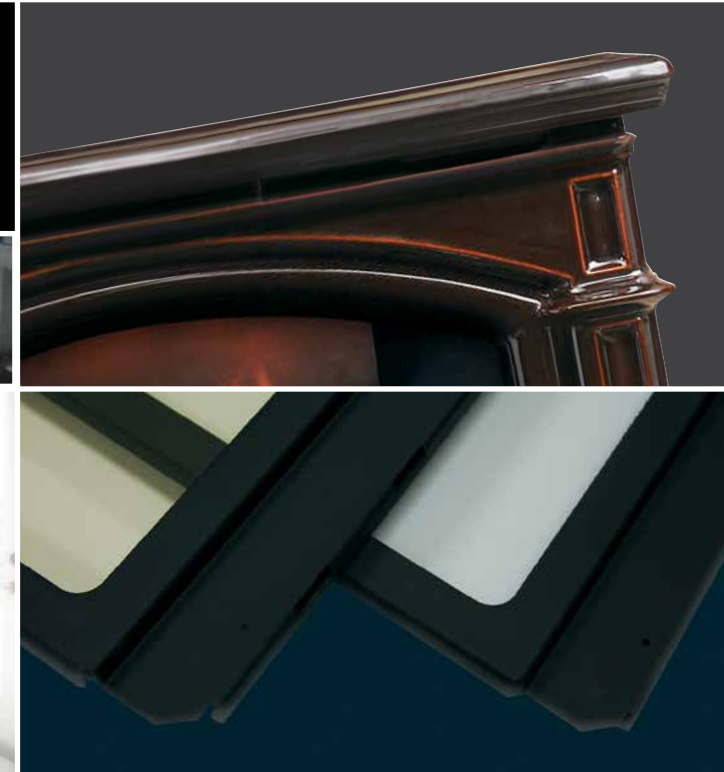
GDS50 shown with painted black door and standard painted black trivet and accent bar



GDS50 shown with satin chrome plated door, accent bar and standard painted metallic black trivet

Outstanding Features

of Napoleon's Advanced Technology



Advanced Burner Technology

Napoleon's sophisticated burner system offers superior flame technology. Strategically placed burner ports create the most realistic flames in the industry.

Finely Tuned Precision Valves

Surrounded with a protective cast aluminum jacket, the precision valves allow for ultimate reliability and 100% SAFE GUARD[®] gas control system.

Minimum 30% savings on heating costs with Zone Heating

Zone Heating means you are heating the rooms that you use the most with an alternate heat source, like a Napoleon[®] gas stove. Zone Heating is the obvious solution for families concerned about rising fuel costs.

Outstanding Craftsmanship

Napoleon's distinctive porcelain enamel is baked onto cast iron at 1800 °F to give you a deep, lustrous, scratch resistant and easy to clean surface. Majolica is a unique double porcelainizing process offering a rich, luxurious, long lasting finish.

High Heat Ceramic Glass

Unlike tempered glass, ceramic glass is made to withstand extreme high temperatures, allowing maximum radiant heat performance and safety.

Decorative Panels



Sandstone

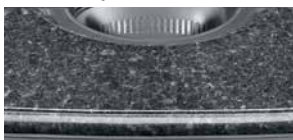


Sandstone Brick



MIRRO-FLAME[™]
Porcelain Reflective Radiant Panels

Stove Top Insets & Side Panels



Lorena Slate Finish



Ubatuba Green Finish



Giallo Golden Brown Finishes

Finishes



Painted Metallic
Black Finish



Porcelain Enamel
Majolica Brown Finish



Painted Black Finish

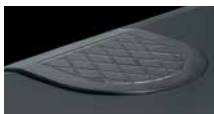


Porcelain Enamel
Summer Moss Finish



Porcelain Enamel
Winter Frost Finish

Cast Iron Trivets



Painted Black Finish



Chrome Plated Finish



Painted Metallic
Black Finish (standard)

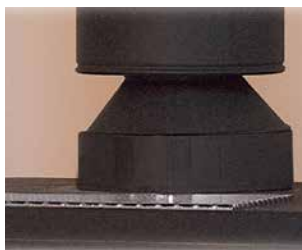


Satin Chrome
Plated Finish



24 Karat Gold
Plated Finish

Ornamental Trivets



Exclusive NIGHT LIGHT[™]

The exclusive NIGHT LIGHT[™] illuminates the decorative firebox even when the stove is not operating.

WHISPER QUIET[™] Heat Circulating Blower System

The extreme heat resistant "H" class bearings featured in Napoleon's superior heat circulating blower, creates a lasting "whole home" comfort with adjustable high & low speeds.

B-Vent Adapter Kits

Already have a chimney? No problem! The direct vent stove easily converts into a convenient B-Vent using Napoleon's exclusive B-Vent Adapter kit, including a standard built-in safety spill switch with automatic reset.

Andirons

Designed to stand in front of the logs and give the optimum traditional masonry look and feel.



Convenient Remote Controls

Napoleon's remotes with digital read out and modulating control give you the comfort level you need at the touch of a button.

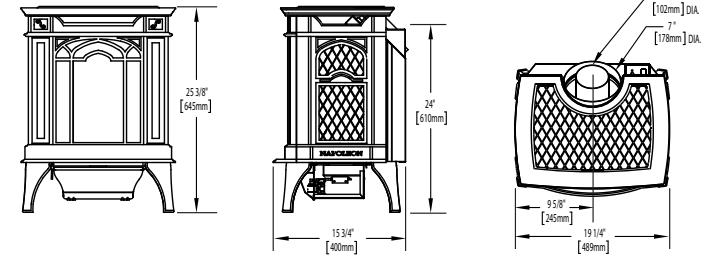


	6DS20	6DS25	6DS26	6DS28	6DS29	6DS50
Accent Bar (painted metallic black, satin chrome plated and 24 Karat gold plated finishes)	-	-	-	-	0**	0**
Ornamental Trivets (painted metallic black, satin chrome plated and 24 Karat gold plated finishes)	-	-	-	-	0**	0●
Doors (painted metallic black, satin chrome plated and 24 Karat gold plated finishes)	-	-	-	-	0	0
Cast Iron Trivets (painted black and chrome plated finishes)	-	-	-	0	-	-
Stove Top Insets & Side Panels (lorena slate, ubatuba green and giallo golden brown finishes)	0	0	0	-	-	-
Andirons (painted black and 24 Karat gold plated finishes)	-	-	-	0*	0	0*
MIRRO-FLAME [™] Porcelain Reflective Radiant Panels	S	0	0	-	-	-
Decorative Sandstone Panels	-	-	0	-	-	-
Decorative Sandstone Brick Panels	-	0	-	0	-	-
Safety Screen	-	0	-	-	-	-
Exclusive NIGHT LIGHT [™]	-	S	S	-	-	-
Stove Finishes (painted metallic black finish)	-	-	0	0	S	S
Stove Finishes (porcelain enamel Majolica brown finish)	0	0	0	0	-	-
Stove Finishes (painted black finish)	0	0	-	-	-	-
Stove Finishes (porcelain enamel summer moss finish)	-	-	0	-	-	-
Stove Finishes (porcelain enamel winter frost finish)	-	0	0	-	-	-
Ceramic Glass	S	S	S	S	S	S
Operable Double Doors	-	S	-	-	-	-
PHAZERAMIC [™] Burner	S	S	S	-	-	-
45° Venting	0	0	-	-	-	-
B-Vent Adapter Kit	-	-	-	0	0	0
F45 & F60 On/off or Modulating Remote Controls	0	0	0	0	0	0
Digital Wall Mount Thermostat Control	0	0	0	0	0	0
Blower Kit/Fan Kit with Variable Speed Switch	0	0	0	0	S	S
Anti-Condensation Switch (ACS)	-	0	0	S	-	-
Leg Leveling Kit	0	0	-	0	-	-
Restrictor Plate	0	-	0	0	-	-
Electronic Ignition	-	S	S	S	-	-

S - Standard O - Optional * Painted Black Finish Only ** Painted Metallic Black Finish Standard ● Painted Metallic Black Finish Only

GDS20 - Arlington™

Shown on pages 4 & 5

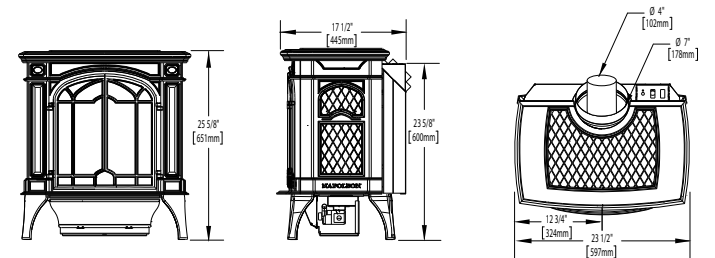


Model	BTU's (Input)		Venting	Height	Front Width	Depth	Glass Type	Glass Size		Efficiencies			Blower Kit	Mobile Home Certified	Electronic Ignition	Minimum Clearances to Combustibles		
	Natural Gas	Propane						Actual	Actual	Actual	Height	Width				EnerGuide	AFUE	Steady State
GDS20	20,000	20,000	45°	25 3/8"	19 1/4"	15 3/4"	Ceramic	13"	14"	60%	-	78%	Optional	Yes	No	2"	2"	4"

Certified under Canadian and American National Standards.

GDS25 - Bayfield™

Shown on pages 6 & 7

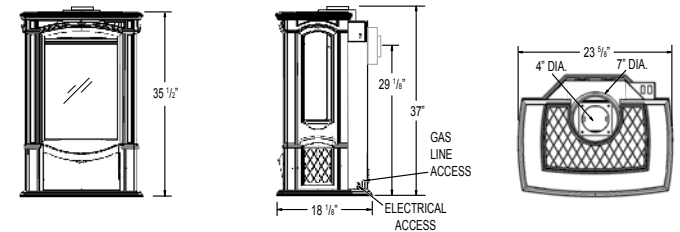


Model	BTU's (Input)		Venting	Height	Front Width	Depth	Glass Type	Glass Size		Efficiencies			Blower Kit	Mobile Home Certified	Electronic Ignition	Minimum Clearances to Combustibles		
	Natural Gas	Propane						Actual	Actual	Actual	Height	Width				EnerGuide	AFUE	Steady State
GDS25	24,500	23,000	45°	25 5/8"	23 1/2"	17 1/2"	Ceramic	15"	18"	64.1%	64%	80%	Optional	Yes	Yes	2"	2"	4"

Certified under Canadian and American National Standards.

GDS26 - Castlemore™

Shown on pages 8 & 9



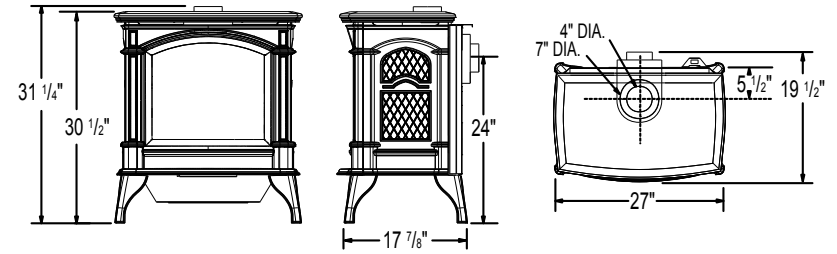
Model	BTU's (Input)		Venting	Height	Front Width	Depth	Glass Type	Glass Size		Efficiencies			Blower Kit	Mobile Home Certified	Electronic Ignition	Minimum Clearances to Combustibles		
	Natural Gas	Propane						Actual	Actual	Actual	Height	Width				EnerGuide	AFUE	Steady State
GDS26	25,000	25,000	Top or Rear	35 1/2"	23 5/8"	18 1/8"	Ceramic	24"	16 5/8"	61.3%	-	82%	Optional	Yes	Yes	2"	5"	2"

Certified under Canadian and American National Standards. This product has a design registration. Wolf Steel Ltd ©

Figures may vary with individual conditions such as floor plan layout, insulation value/heat loss of the house and geographical location. Measurements to be used as a guide only. Consult your owner's manual for complete and up-to-date installation instructions and proper clearances to combustible materials.

GDS60 - Cast Iron Gas Stove

Shown on pages 10 & 11

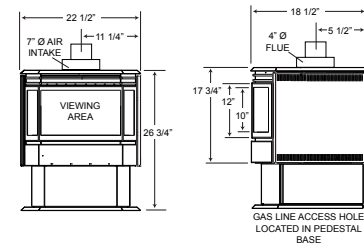


Model	BTU's (Input)		Venting	Height	Front Width	Depth	Glass Type	Glass Size		Efficiencies			Blower Kit	Mobile Home Certified	Electronic Ignition	Minimum Clearances to Combustibles		
	Natural Gas	Propane						Actual	Actual	Actual	Height	Width				EnerGuide	AFUE	Steady State
GDS60	35,000	31,500	Top or Rear	30 1/2"	27"	17 7/8"	Ceramic	18 3/4"	21"	63.1%	64%	78%	Optional	Yes	Yes	2"	6"	6"

Certified under Canadian and American National Standards.

GDS28

Shown on pages 12 & 13

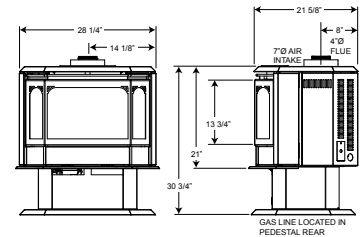


Model	BTU's (Input)		Venting	Height	Front Width	Depth	Glass Type	Glass Size		Efficiencies			Blower	Mobile Home Certified	Electronic Ignition	Minimum Clearances to Combustibles		
	Natural Gas	Propane						Actual	Actual	Actual	Height	Width				EnerGuide	AFUE	Steady State
GDS28	30,000	26,000	Top	26 3/4"	22 1/2"	18 1/2"	Ceramic	12 3/8"	21"	57.4%	65%	85%	Standard	Yes	No	1"	2"	7"

Certified under Canadian and American National Standards.

GDS50

Shown on pages 14 & 15



Model	BTU's (Input)		Venting	Height	Front Width	Depth	Glass Type	Glass Size		Efficiencies			Blower	Mobile Home Certified	Electronic Ignition	Minimum Clearances to Combustibles		
	Natural Gas	Propane						Actual	Actual	Actual	Height	Width				EnerGuide	AFUE	Steady State
GDS50	44,000	40,000	Top	30 3/4"	28 1/4"	21 5/8"	Ceramic	13 7/8"	25 3/4"	70%	67%	84%	Standard	Yes	No	1"	2"	7"

Certified under Canadian and American National Standards.

Figures may vary with individual conditions such as floor plan layout, insulation value/heat loss of the house and geographical location. Measurements to be used as a guide only. Consult your owner's manual for complete and up-to-date installation instructions and proper clearances to combustible materials.

Other Napoleon Products

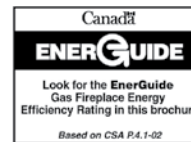


Fireplace Inserts • Charcoal Grills • Gas Fireplaces • Waterfalls • Wood Stoves
 Hybrid Furnaces • Electric Fireplaces • Heating & Cooling • Gourmet Grills



24 Napoleon Road, Barrie, Ontario, Canada L4M 0G8
 103 Miller Drive, Crittenden, Kentucky, USA 41030
 7200 Trans Canada Highway, Montreal, Quebec, Canada H4T 1A3

Tel: 705-721-1212 Fax: 705-722-6031
napoleonfireplaces.com



Authorized Dealer

Consult your owner's manual for complete installation instructions and proper clearances to combustible materials. Check all local and national building codes and gas regulations. All specifications are subject to change without prior notice due to on-going product improvements. Products may not be exactly as shown. Flame height and activity is influenced by varying vent configurations and may not appear as shown. Napoleon® is a registered trademark of Wolf Steel Ltd. © Wolf Steel Ltd. EnerGuide - A Canadian efficiency standard based on frequent, short start-up and cool-down cycles. All appliances sold in Canada are subject to this EnerGuide rating system. AFUE - A US efficiency standard (Department of Energy) based on extended on/off cycles, more typical of fireplace usage. Steady State - Reflects the highest possible overall heating efficiency.