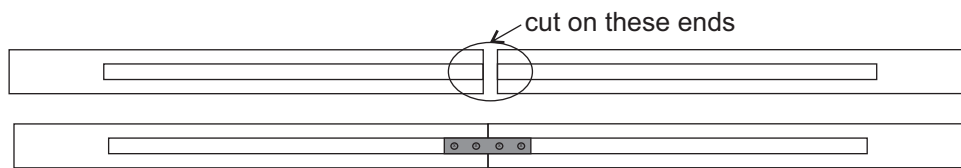


Adjustable Shelf Assembly Instruction:

1. Hardware lists:
 - *Adjustable 2 piece hanger board
 - *1pc Metal plate and 4pcs Phillips head screws = 1 set
 - for use in connecting the adjustable hanger board
2. Determine your desired shelf length by measuring your mounting space then proceed to #3.
3. Your 2 piece hanger board is designed to be completely adjustable to accommodate the shelf length determined on #2. Cut hanger boards on the routed ends and in equal lengths to meet your desired total length. Connect the pieces using the metal plate and 4 Philips screws.



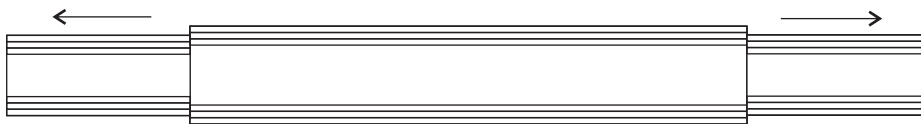
Installation using the Hanger Board

For hanging your shelf, we suggest that you use the hanger board included in this box. The type of hardware (not included) you will use for mounting your hanger board will depend upon the medium your shelf will be attached to (i.e. brick, stone, drywall...). Please consult a professional for advice on the proper hardware.

Measuring

The hanger board measurement should be taken from the floor or the hearth to the bottom edge of the hanger board. Mark your recorded measurement on your wall, both left and right. Take the wall hanger board and mount it on the wall so that the bottom edge of the board is on your recorded marks. Check to see that your hanger board is centered over your firebox before mounting.

4. Hang the mantel assembly and adjust left and right shelf arm to fit your hanger board.



The hanger board is only a suggested method. Your installer may also have additional methods for mounting your mantel or shelf. We suggest that pilot holes be drilled prior to inserting the appropriate hardware for final installation on the wall surface.

Mounting hardware for hanger board and scribe moldings not included

Wood and MDF mantels are considered combustible materials. Heat clearances must be adhered to. Before installing, check your local building codes and the manufacturer's instructions for your specific fireplace insert or stove.