

realfyre™

PREMIUM GAS LOGS



Real Fyre • 2019 Vented Collection Catalog • R H Peterson Co.

RH  PETERSON co.

PREMIUM GAS LOG SETS
Vented Collection

CRAFTED WITH PRIDE



IN THE USA



Real Fyre® Charred Majestic Gas Logs pictured in an Estate series fireplace by Lennox



In the chill of the season, family and friends gather around the comfort of the fireplace, making your home aglow with life.

There's nothing quite like savoring a steaming cup of coffee or a robust glass of wine, in front of a fireplace complete with the beautiful glow created by a Real Fyre® gas log set.

Available in more than 50 authentic styles, all Real Fyre® gas log sets are handcrafted, hand painted, and look stunningly realistic. From active natural flames down to a glowing bed of lifelike embers, the Real Fyre® Vented Collection is designed to complement your fireplace. Real Fyre® gas logs replicate the beauty of a wood fire with the convenience and cleanliness of gas.

If a more contemporary look is what you seek, Real Fyre® Glass, Gems, and Diamond Nuggets can turn your hearth into the pinnacle of modern style.

With companion accessories such as safety controls, pine cones, acorns, wood chips, and many other items, you can further enhance the beauty and practicality of your hearth. Real Fyre® Gas Logs are certified/listed to national standards, and come with the best warranty in the industry.

Real Fyre® has been providing comfort, convenience, and enjoyment for homes for 70 years. Experience the Vented Collection from Real Fyre® and enjoy the splendor and warmth of a wood fire while dramatically reducing air pollutants. Burning Real Fyre® gas logs, instead of wood, preserves precious forest resources for generations to come. Experience Real Fyre® ...

... What a Fire is Meant To Be™



Charred Evergreen Oak (ENO)

New G52 Stainless Steel Outdoor Burner



Decorative Heat Shield Included (-NA valve only)



Shown: G52-24/30-NA-SS

Control options for outdoor burner include:
 - Manual valve with standing pilot, NG or LP (-NA)
 - Match-lit (Natural Gas only)

G52 RADIANT FYRE BURNER SYSTEM

With enticing dancing flames, you can feel the warmth and experience the glow of the Peterson Real Fyre® G52 Radiant Fyre gas log systems. Molded with an exclusive fiber enhanced refractory ceramic mixture, these handcrafted logs showcase the crisp Charred Evergreen Oak, Charred Evergreen Split Oak bark detail, as well as the unique look of the new Burnt Aspen and the new Colonial Oak log sets.

Key Features

- Exclusive **stainless steel booster grid** acts as a catalyst to increase the intensity of the fire and the glow of the logs
- Dual-tiered burner system uses **fewer BTU's** while radiating a higher, robust fire with dancing flames
- Hidden controls are positioned under the burner for a **compact footprint** to fill your fireplace with flame
- Multiple control options for indoor burner include:
 - Electronic valve with Intermittent Pilot Ignition (IPI) and variable flame height control via remote (-2VT)*
 - Electronic valve with Intermittent Pilot Ignition (IPI) and on/off remote control (-02)*
 - Millivolt valve with standing pilot and variable flame height control via remote (-17)*
 - Manual valve with standing pilot (-A)
 - Match-lit (Natural Gas only)
- For use with Natural Gas or Propane
- Burner available in 18/20" and 24/30" sizes
- Compatible with our unique **fiber enhanced ceramic refractory mix** Charred Evergreen Oak (ENO), Charred Evergreen Split Oak (ENS), Colonial Oak (COLO), & Burnt Aspen (BTA) gas logs; in sizes 18/20", 24", and 30"

Decorative Heat Shield Included (-2VT, -02, & -17 valves only)

Stainless Steel Booster Grid



Shown: G52-24/30-2VT

*May be used in Manual Mode



Sizes 18" - 30"



Colonial Oak (COLO)



Sizes 18" - 30"



Burnt Aspen (BTA)

Sizes 18"-30"



Charred Evergreen Oak (ENO)

Sizes 18"-30"



Charred Evergreen Split Oak (ENS)

All G52 log sets are molded with an exclusive **fiber enhanced refractory ceramic mixture** which provides a brighter glow and more intense radiant heat. These logs are only compatible with the G52 Burner System only.

Sizes 18", 24", 30", 33", & 39"

Sizes 18", 24", 30", 33", & 39"



Mountain Crest Oak (MCO)



Mountain Crest Split Oak (MCS)

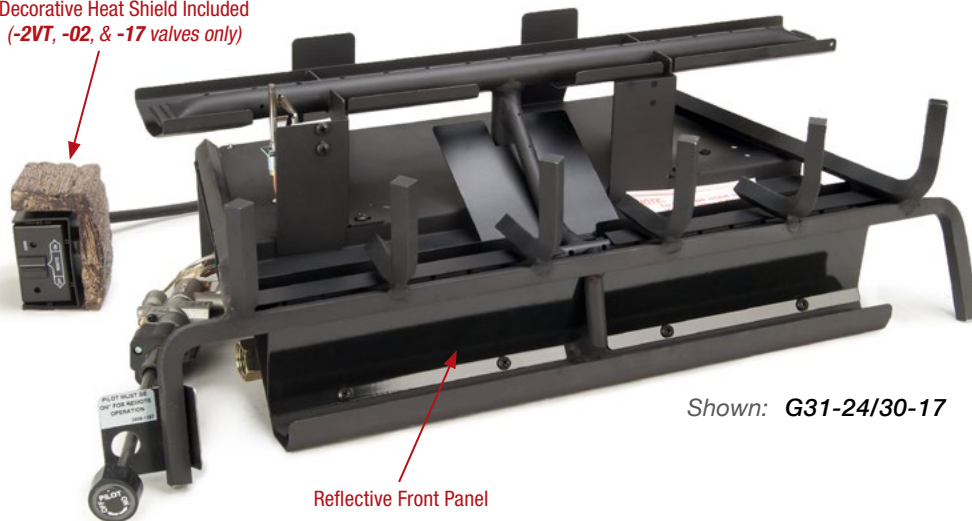
G31 3-TIERED BURNER SYSTEM

The Real Fyre® G31 three(3)-tiered burner system creates high and full-bodied flame...while using fewer BTU's than other vented burner systems. This burner has 2 specially designed log sets...**PLUS** it is also compatible with 7 additional gas log sets from the Real Fyre® Vented Charred Series Collection.

Key Features

- **3-Tiered burner** design for high, full-bodied flame
- Compact footprint to fill your fireplace
- Uses **fewer BTU's** than other vented burners
- Porcelainized **reflective front panel** to provide a deeper ember bed reflection
- Multiple control options include:
 - Electronic valve with Intermittent Pilot Ignition (IPI) and variable flame height control via remote (-2VT)*
 - Electronic valve with Intermittent Pilot Ignition (IPI) and on/off remote control (-02)*
 - Millivolt valve with standing pilot and variable flame height control via remote (-17)*
 - Manual valve with standing pilot (-A)
 - Match-lit (Natural Gas only)
- For use with Natural Gas or Propane
- Burner available in 18/20", 24/30", and 33/39" sizes
- Exclusively designed log sets include: Mountain Crest Oak (MCO) and Mountain Crest Split Oak (MCS); sizes 18", 24", 30", 33", and 39"
- Burner system also **compatible with 7 additional gas log sets** from the Charred Series Vented Collection (including the **Charred Majestic Oak** in sizes 24", 30", and 36", not pictured) **See page 9**

Decorative Heat Shield Included
(-2VT, -02, & -17 valves only)



Shown: G31-24/30-17

Reflective Front Panel

*May be used in Manual Mode

G31 COMPATIBLE CHARRED GAS LOG SETS

Sizes 18/20", 24", & 30"



Charred Angel Oak (CHNA) w/G31

Sizes 18/20", 24", & 30"



Charred Angel Split Oak (CHNS) w/G31

Sizes 18/20", 24", & 30"



Charred Oak (CHD) w/G31

Sizes 18/20", 24", 30", & 36"



Charred Split (CHS) w/G31

Sizes 18/20", 24", & 30"



Charred American Oak (CHAO) w/G31

Sizes 24", 30", & 36"



Charred Royal English Oak (CHB) w/G31

CHARRED SERIES

Like an artist who can bring the beauty of nature to life, Real Fyre® artisans work from real wood samples to meticulously recreate the intricate bark detail and natural coloration of deeply charred wood. The burned-through centers of the resulting log sets—from the Charred American Oak to the Charred Majestic Oak—reveal the brilliance and fiery heart of a robust, long-burning fire.

The Charred Series from Real Fyre®, experience the pinnacle of realism...
...so real you can almost smell the wood.



Sizes 18"-30"

Charred Mountain Birch (CHMBW)

Sizes 16"-30"



Charred Oak (CHD)

Sizes 16"-30"



Burnt Rustic Oak (HCHR)

Sizes 18"-36"



Charred Split (CHS)

Sizes 18"-30"



Burnt Split Oak (HCHS)

Sizes 18"-30"



Charred Rugged Split Oak (CHRRSO)

Sizes 18"-30"



Charred American Oak (CHAO)

CHARRED SERIES



Charred Series



Royal English Oak (BD) pictured

DESIGNER SERIES

These hand painted originals, modeled from real wood samples, add a touch of elegance to your home. The quality and design of the Real Fyre® Designer Series captures the realism, texture, and subtle nuance of nature's handiwork.

Experience the Designer Series from Real Fyre® and enjoy what's worth remembering.



Sizes 24"-36"

Gnarled Split Oak (GSO)



Sizes 16"-42"

Rustic Oak Designer (HRD)



Sizes 18"-30"

Forest Oak (FO)



Sizes 18"-30"

American Oak (AO)



Sizes 18"-30"

Red Oak (RED)

DESIGNER SERIES

Sizes 18"-36"



Split Oak Designer Plus (SDP)

Sizes 12"-60"



Golden Oak Designer Plus (RDP)

Sizes 18"-30"



Split Oak (S)

Sizes 18"-30"



Rugged Split Oak (RRSO)

Sizes 18"-30"



Woodstack (WS)

Sizes 18"-30"



Woodland Oak (WO)

DESIGNER SERIES

Sizes 18"-30"



Mountain Birch (MBW)

Sizes 18"-30"



White Birch (W)

Sizes 18"-30"



Western Campfire (WCF)

Sizes 18"-42"



Royal English Oak Designer (BD)

Sizes 18"-30"



Old English Coal Grate (V)

CLASSIC SERIES

Since originating the gas log set over 65 years ago, Real Fyre® has grown to offer the broadest selection of log sets to enhance the home, and the most innovative technologies to safeguard the environment. Through it all, the Classic Series has withstood the test of time with traditional favorites, like Golden Oak, which will always be in style.

Experience the Classic Series from Real Fyre® and experience what's new again.



Rugged Oak (RRO) pictured

Sizes 18"-36"



Coastal Driftwood (CDR)

Sizes 16"-42"



Rustic Oak (HR)

Sizes 18"-30"



Rugged Oak (RRO)

Sizes 18"-30"



Post Oak (PO)

Sizes 18"-42"



Royal English Oak (B)

Sizes 12"-42"



Golden Oak (R)



Mammoth Pine (MPEC) pictured

SPECIALTY SERIES - LARGE SETS

Unique in their design and purpose, the specialty sets are crafted to meet the needs of specific fireplace types. Now, whatever the experience you hope to spark, Real Fyre® can make it a reality. Experience a Specialty Set from Real Fyre® and experience what's special.

Sizes 24"-60"



Mammoth Pine (MP) *Compatible with Epic Burner (EC) only*

Also available as a "See-Thru" gas log set (MP-2-) with compatible see-thru Epic Burner (EC-2-) / sizes 24"-60".

Sizes 24"-72"



Charred Majestic Oak (CHMJ)

SPECIALTY SERIES - SEE-THRU SETS

Sizes 16"-30"



Charred Oak, See-Thru (CHD-2-)

Sizes 18"-30"



Charred Rugged Split Oak, See-Thru (CHRSO-2-)

Sizes 18"-30"



Charred American Oak, See-Thru (CHAO-2-)

Sizes 16"-60"



Golden Oak Designer Plus, See-Thru (RDP-2-)

Sizes 18"-30"



American Oak, See-Thru (AO-2-)

Sizes 18"-30"



Rugged Split Oak, See-Thru (RRSO-2-)

Additional See-Thru Sets (not pictured):

- Charred Royal English Oak, See-Thru (CHB-2-) / Sizes 18"-42"
- Split Oak Designer Plus, See-Thru (SDP-2-) / Sizes 18"-36"
- Mountain Birch, See-Thru (MBW-2-) / Sizes 18"-30"
- Golden Oak, See-Thru (R-2-) / Sizes 16"-42"
- Coastal Driftwood, See-Thru (CDR-2-) / Sizes 18"-36"

SPECIALTY SERIES - SMALL SETS

For those more intimate gatherings around a smaller hearth, we offer the Small Sets Series. Ideal for smaller wood-burning fireplaces or where reduced gas usage is desirable. These carefully crafted log sets are anything but small when it comes to the rich ambiance they will bring into your home.

Experience the Small Sets Series from Real Fyre®. Only 9½" deep, and 12" rear width, these sets provide a large radiant flame with just 39,000 BTU's.



Rustic Oak Designer (HRD) pictured.



Size 16"-19"

Charred Oak (CHD)



Sizes 12"-19"

Golden Oak Designer Plus (RDP)



Size 16"

Rustic Oak Designer (HRD)



Size 16"

Burnt Rustic Oak (HCHR)



Sizes 12"-19"

Golden Oak (R)



Size 16"

Rustic Oak (HR)

P45 TAPERED PAN BURNER SYSTEM

Sizes 18"-30"



Shoreline Designer Oak (SO) w/P45

Sizes 18"-30"



Shoreline Driftwood (SDW) w/P45

KEY FEATURES INCLUDE:

- Tapered pan design with **H-burner** creates a dynamic flame pattern
- **Legs** to elevate burner pan... (or leave the pan on the floor for more rustic appearance)
- **Multiple control options include:**
 - Automatic valve with standing pilot, variable flame height, and remote control (-17)
 - Manual valve with standing pilot and variable flame height (-A)
 - Match lit (Natural Gas only, does not include legs)
- Three sizes of burner systems (**18"**, **24"**, & **30"**) to fit most wood-burning fireplaces
- Available for use with **Natural Gas** or **Propane**
- Compatible with **Shoreline** gas logs and **Fyre Spheres**. May also be used with Fyre Glass, Fyre Gems, and Diamond Nuggets. (see pages 21-23)



24" P45 Burner with Manual Valve & Standing Pilot (P45-24-17)



FF-04
Cast Iron Fender

Optional Decorative Front Fender



Sizes 18"-30"

Epic Black Fyre Spheres (FSx-**-EB) †



Sizes 18"-30"

Graystone Fyre Spheres (FSx-**-GS) †

† x = sphere size - 4" or 5", ** = set size - 18", 24" or 30"

CONTEMPORARY SERIES - GEO SHAPES & RIVER ROCK



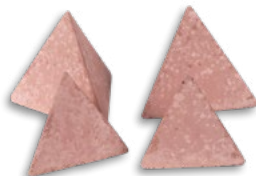
Assorted Geo Shapes shown with Gold Reflective Fyre Glass

GEO SHAPES

All Geo Shape Sets are available in one of three distinct colors: Terracotta, Ivory, and Slate. Most Geo Shape sets are available in a combination of 2 large and 2 small or can be ordered as just 2 large or just 2 small.



GEO-SS-4
Spheres



GEO-TT-4
Tetras



GEO-HI-4
Domes



GEO-PI-4
Pyramids



GEO-DS-4
Diamonds



GEO-CI-4
Cones



STN-20
20-pc. Designer River Rock Fyre Stones



STN-10
10-pc. Assorted River Rock Fyre Stones



STN-10T
10-pc. Terracotta River Rock Fyre Stones



STN-10S
10-pc. Slate River Rock Fyre Stones



STN-10I
10-pc. Ivory River Rock Fyre Stones

See pages 26 & 27 for burner systems for use with the Real Fyre® Geo Shapes and River Rock Fyre Stones.



Gold Reflective Fyre Glass (GL-HR) pictured

FYRE GLASS

Crushed Fyre Glass shines radiantly throughout your entire fireplace and creates a brilliant fire as flames reflect off the Fyre Glass' multi-faceted surfaces. It is fully tempered "toughened" glass - fire tested up to 1200°F by Peterson's accredited laboratory. Fyre Glass is formulated to stay as radiant as the first day it's installed and can tolerate extreme temperatures without melting or discoloring. Choose one or several of our many available colors to customize your fireplace, or outdoor fire feature.

Fyre Glass



Azuria (GL-**-F)



Black (GL-**-B)



Bronze (GL-**-Z)



Caribbean Blue (GL-**-N)



Clear (GL-**-C)



Emerald (GL-**-E)



Star Fyre (GL-**-W)



10 lb. Jar
(GL-10J-**)

Reflective Fyre Glass



Azuria Rfl. (GL-**-FR)



Black Rfl. (GL-**-BR)



Bronze Rfl. (GL-**-ZR)



Caribbean Blue Rfl. (GL-**-NR)



Copper Rfl. (GL-**-QR)



Emerald Rfl. (GL-**-ER)



Gold Rfl. (GL-**-HR)



Champagne Rfl. (GL-**-CR)

Available in a 5 lb bag, a 7.5 lb bag, a 10 lb bag, a 10 lb jar, or a 40 lb container.

NOTE: COLORS MAY VARY FROM THOSE SHOWN IN PHOTOS.

FYRE GEMS

Fyre Gems are designed so that your fireplace will glow and sparkle in a sea of vibrant, glistening flame. Their rounded and smooth surfaces reflect the fire, providing a unique hearth experience. Each Fyre Gem is approximately 5/8" in diameter and is manufactured to withstand the extreme heat and temperature variations in the fireplace without melting or discoloring. Choose one or several of our many available colors to customize your fireplace or outdoor fire feature.



10 lb. Jar (GLG-10J-**)



Black Granite (GLG-**-B)



Black Pearl (GLG-**-J)



Blue Topaz (GLG-**-T)



Champagne (GLG-**-D)



Deep Amber (GLG-**-A)



Emerald (GLG-**-E)



Glacier (GLG-**-C)



Sapphire (GLG-**-S)



Ruby (GLG-**-RY)

DIAMOND NUGGETS

The newest shapes in contemporary glass are the new Diamond Nuggets. With a unique brilliance, distinct from any other, Real Fyre's® icy Diamond Nuggets set the standard in contemporary style. These crystal-like oversized nuggets radiate a clean, modern feel and are available in seven glittering colors.



Clear Diamond Nuggets (GLD-C)



Clear (GLD-**-C)



Steel Blue (GLD-**-SB)



Rosé (GLD-**-R)



Emerald (GLD-**-E)



Pacific Blue (GLD-**-PB)

Also see page 29 for burner systems for use with the Real Fyre® Diamond Nuggets



Deep Black (GLD-**-DB)



Black Luster (GLD-**-BL)



10 lb. Jar (GLD-10J-**)

Available in a 5 lb bag, a 7.5 lb bag, a 10 lb bag, a 10 lb jar, or a 40 lb container.
NOTE: COLORS MAY VARY FROM THOSE SHOWN IN PHOTOS.

FYREBACKS

The Real Fyre® collection of Fyrebacks is specially designed to augment the flame reflection in your fireplace while providing a functional backdrop for your fire logs or Contemporary Alternative products. Contemporary or Traditional styles are available in either satin stainless steel, polished stainless steel, black porcelain, or a polished rose gold finish. Whether you're trying to make a dramatic statement or an understated one, Real Fyre® has the Fyreback that's perfect for any hearth.



Sizes 18"-36"

Polished Stainless Contemporary Fyreback (FBCP-24)
(Shown with 24" Shoreline Oak (SO-24) logs and P45 Burner)

Traditional Fyrebacks



FBS-24 (Satin Stainless)



FBSP-24 (Polished Stainless)



FBSG-24 (Rose Gold)



FBSB-24 (Black Porcelain)

Contemporary Fyrebacks



FBC-24 (Satin Stainless)



FBCP-24 (Polished Stainless)



FBCG-24 (Rose Gold)



FBCB-24 (Black Porcelain)

COMPLETE SYSTEM

All of our Gas Logs are Steel Reinforced for longer life.



Gas Logs
(CHAO-Charred American Oak shown)

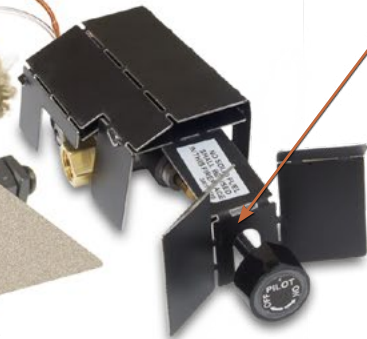


Steel Grate



Glowing Embers

Optional Control Valves
(SPK-26 shown)



Burner Pan
(G45-24 shown)

White Sand (NG)
or
Vermiculite (LP)

BURNER SYSTEMS

The extensive Real Fyre® collection of burner systems, for both gas logs and contemporary applications, offers the most versatile and comprehensive lineup in the industry. Each burner design is meticulously engineered to enhance and maximize the beauty and realism of every Real Fyre® product.

From match-lit G4 burners to ANSI certified stainless steel see-thru burners, you'll be sure to find the right burner for your unique application. Most burners are available in Natural Gas or Propane. For BTU information and available sizes, see page 29.

Control options include:

- Match-lit (Natural Gas only)
- Manual valve with standing pilot (-A)
- Millivolt valve with standing pilot and on/off remote (-11)
- Low profile millivolt valve with standing pilot and variable flame height control via remote (-15)
- Millivolt valve with standing pilot and variable flame height control via remote (-17)
- Electronic valve with Intermittent Pilot Ignition (IPI) and on/off remote control (-02)
- Electronic valve with Intermittent Pilot Ignition (IPI) and variable flame height control via remote (-2VT)

Not all control options listed above are available on each burner system.



Decorative Heat Shields

Every Real Fyre™ gas log set that has a **factory-attached Remote Control System (APK's and EPK's)** has a **Decorative Heat Shield** to conceal the Remote Receiver/Switch Box located inside or outside the fireplace and to provide longer life for the unit and batteries.



G4 & GX4
Glowing Ember Burners*

- Classic, single burner setup
- Compatible with most Real Fyre® log styles and controls
- The **GX4** models (and sizes over 36") include a heavy-duty grate
- Sizes: 12", 16/19", 18/20", 24", 30", 36", 42", 48", & 60"



G45 & GX45
Triple T Burners*

- Features an H-burner setup to enhance the ember bed
- Compatible with most Real Fyre® log styles and controls
- ANSI certified models available with multiple factory-installed safety valves (models up-to 36" only)
- The **GX45** models (and sizes over 36") include a heavy-duty grate
- Sizes: 16/19", 18/20", 24", 30", 36", 42", 48", & 60"



G45-GL
Triple T Glass Burners

- Features an H-burner setup that creates an enchanting flame picture when used with Fyre Gems and Fyre Glass
- Elevated platform provides the maximum effect of the reflective nature of glass and spreads the flame for ultimate beauty
- ANSI certified models available with multiple factory-installed safety valves (models up-to 36" only)
- Stainless steel outdoor model also available
- Sizes: 16/19", 18/20", 24", 30", 36", 42", 48", & 60"



G45-2-GL
See-Thru Triple T Glass Burners

- Features a "triple" burner setup to create an enchanting flame
- Ideal for see-thru, peninsula, or island fireplaces
- Elevated platform provides the maximum effect of the reflective nature of glass and spreads the flame for ultimate beauty
- ANSI certified models available with multiple factory-installed safety valves (models up-to 36" only)
- Sizes: 16/19", 18/20", 24", 30", 36", 42", 48", & 60"



P & PB
Flame Pan Burners

- Pan burners design allows flames to erupt over the entire pan
- Ideal for see-thru, peninsula, or island fireplaces
- Compatible with most Real Fyre® logs and contemporary media
- ANSI certified models available with multiple factory-installed safety valves (**PB** models 18/20", 24", & 30" only)
- Sizes: 16", 18", 20", 24", 30", 36", & 42"



P45
Tapered Dual-Pan Burners*

- Tapered pan design with H-burner to create a dynamic flame pattern
- Designed for use with the Fyre Spheres, Glass Media, and special gas log sets (see page 18)
- ANSI certified models available with factory-installed safety valves
- Sizes: 18", 24", & 30"

**These burners are shown with optional control system.*



G45--SS**
Stainless Steel Triple T Burners*

- Stainless steel construction ideal for outdoor use
- Features an H-burner setup to enhance the ember bed
- Compatible with most Real Fyre® log styles
- Sizes over 36" include a heavy-duty grate
- Sizes: 16/19", 18/20", 24", 30", 36", 42", 48", & 60"



G45-2 & GX45-2
See-Thru Triple T Burners*

- Features a "triple" burner setup to enhance the ember beds
- Ideal for see-thru, peninsula, or island fireplaces
- Compatible with most See-Thru Real Fyre® log styles
- ANSI certified models available with multiple factory-installed safety valves (models up-to 36" only)
- The **GX45-2** models (and sizes over 36") include a heavy-duty grate
- Sizes: 16/19", 18/20", 24", 30", 36", 42", 48", & 60"



G45-2--SS**
Stainless Steel See-Thru Triple T Burners

- Stainless steel construction ideal for outdoor use with see-thru, peninsula, or island fireplaces
- Features a "triple" burner setup to enhance the ember beds
- Compatible with most See-Thru Real Fyre® log styles
- Sizes over 36" include a heavy-duty grate
- Sizes: 16/19", 18/20", 24", 30", 36", 42", 48", & 60"



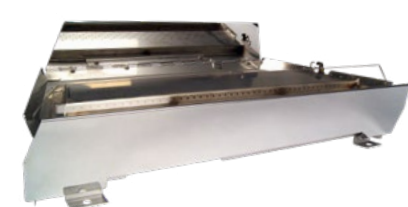
G45-2-GL--SS**
Stainless Steel See-Thru Triple T Glass Burners

- Stainless steel construction ideal for outdoor use with see-thru, peninsula, or island fireplaces
- Features a "triple" burner setup to create an enchanting flame
- Elevated platform provides the maximum effect of the reflective nature of glass and spreads the flame for ultimate beauty
- Sizes: 16/19", 18/20", 24", 30", 36", 42", 48", & 60"



G46
Advanced Glowing Ember Burners*

- Features an H-burner setup with hidden installed controls
- Uses less BTU's while still providing a lively flame
- Compatible with most Real Fyre® log styles
- ANSI certified models available with multiple factory-installed safety valves
- Sizes: 18/20", 24", & 36"



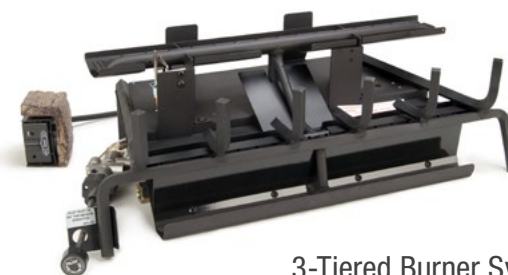
G22-GL
Stainless Steel Contemporary Glass Burners*

- All Stainless Steel construction burner with elevated, tapered platform and mirrored-front and back panels
- Burns cleanly with glass/gems directly on burner ports providing a beautiful sea of flames
- Extra high, extra deep flame appearance
- Ideal for indoor or outdoor use
- Automatic pilot with remote for easy on/off control
- See-Thru model also available
- Sizes: 18", 24", & 30"



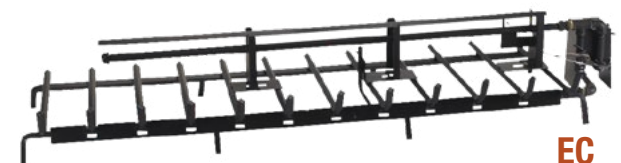
G52
Radiant Fyre Burner System*

- This burner system features an exclusive stainless steel "booster grid" that acts as a catalyst to increase the intensity of the fire
- Compatible with Charred Evergreen Oak (ENO), Charred Evergreen Split Oak (ENS), Burnt Aspen (BTA), & Colonial Oak (COLO) gas logs only (see pgs. 4 & 5 for details)
- ANSI certified models available with multiple factory-installed safety valves
- Stainless steel outdoor model also available
- Sizes: 18/20" and 24/30"



G31
3-Tiered Burner System*

- This burner system creates high and full-bodied flame...while using fewer BTU's than other vented burner systems
- It has 2 specially designed log sets...PLUS it is also compatible with 7 additional gas log sets (see pages 6 & 7 for details)
- ANSI certified models available with multiple factory-installed safety valves
- Sizes: 18/20", 24/30", & 33/39"

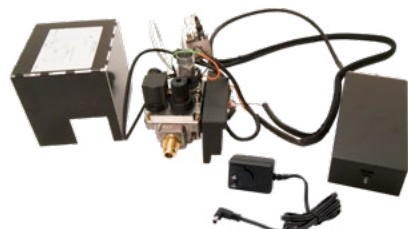


EC
Epic Burner System*

- This burner is designed for use with the Mammoth Pine log set
- Its clean-burn requires no granules or embers; ideal for commercial applications such as restaurants and hotel lobbies
- ANSI certified models available with multiple factory-installed safety valves
- Sizes: 24", 30", 36", 48", & 60"

*These burners are shown with optional control system.

SAFETY VALVES AND CONTROL OPTIONS



EPK-3V(P)-TR
High Capacity, 110V Electronic Valve Kit

- 110V electronic valve kit with intermittent pilot ignition
- Variable flame height control via remote
- AC power operation
- Max BTU input: 200,000 (NG) / 320,000 (LP)
- Compatible with **G4, G45, & G45-2** listed burners
- Includes: Variable remote, receiver, and high capacity transformer



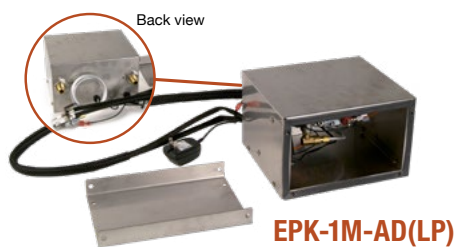
EPK-2V(P)-TR
110V Electronic Valve Kit

- 110V electronic valve kit with intermittent pilot ignition
- Variable flame height control via remote
- AC power operation
- Max BTU input: 120,000 (NG) / 180,000 (LP)
- Compatible with **G4, G45, & G45-2** listed burners
- Includes: Variable remote, receiver, and high capacity transformer



EPK-5(P)
AC Powered Electronic Pilot Kit

- Hot-surface pilot ignition
- On/off remote or manual operation
- AC power operation
- 110V required
- Max BTU input: 200,000 (NG) / 200,000 (LP)
- Compatible with **G4, G45, & G45-2** listed burners
- Includes RR1A on/off remote and receiver



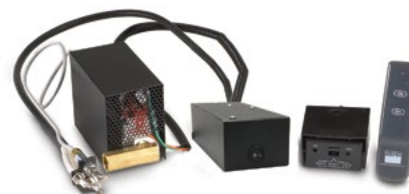
EPK-1M-AD(LP)
110V Electronic Valve Kit

- Non-standing flame-sensing pilot
- On/off manual operation (wall switch sold separately)
- AC power operation
- Max BTU input: 88,000 (NG) / 110,000 (LP)
- Compatible with **G4, G45, G45-2, & PB** listed burners



EPK-2(M)(P)
Automatic Remote Lighting Safety Pilot System

- Intermittent pilot ignition
- Non-standing flame-sensing pilot
- Manual on/off switch (optional remote control available)
- Max BTU input: 120,000 (NG) / 190,000 (LP)
- Compatible with **G4, G45, G45-2, & P** listed burners
- **EPK-2 & EPK-2P** models include RR1A on/off remote and receiver



EPK-1(M)(P)
Automatic Remote Lighting Safety Pilot System

- Intermittent pilot ignition
- Non-standing flame-sensing pilot
- Manual on/off switch (optional remote control available)
- Max BTU input: 88,000 (NG) / 110,000 (LP)
- Compatible with **G4, G45, G45-2, & P** listed burners
- **EPK-1 & EPK-1P** models include RR1A on/off remote and receiver



APK-17(M)(P)
Low Profile, Automatic Safety Pilot System

- Low profile safety valve with standing pilot
- Manual on/off switch (optional remote control available)
- Variable flame-height control (manual or with remote)
- Includes triple heat shield to keep the valve cooler
- Max BTU input: 100,000 (NG) / 200,000 (LP)
- Compatible with **G4, G45, G45-2, & P** listed burners
- **APK-17 & APK-17P** models include VR1A variable remote and receiver



APK-15(P)
Automatic Safety Pilot System w/Variable Remote

- Safety valve with standing pilot
- Variable flame-height control via remote (included)
- Max BTU input: 85,000 (NG) / 135,000 (LP)
- Compatible with **G4, G45, G45-2, & P** listed burners
- Includes VR1A variable remote, receiver, and decorative wood chunk



APK-11(M)(P)
Low Profile, Automatic Safety Pilot System

- Low profile safety valve with standing pilot
- Manual on/off switch (optional remote control available)
- Max BTU input: 70,000 (NG) / 110,000 (LP)
- Compatible with **G4, G45, G45-2, & P** listed burners
- **APK-11 & APK-11P** models include RR1A on/off remote and receiver



APK-10(M)(P)
High Capacity, Automatic Safety Pilot System

- High volume safety valve with standing pilot
- Manual on/off switch (optional remote control available)
- Max BTU input: 230,000 (NG) / 372,000 (LP)
- Compatible with **G4, G45, G45-2, & P** listed burners
- **APK-10 & APK-10P** models include RR1A on/off remote and receiver



SPK-26(P)
Low Profile Safety Pilot System

- Low profile safety valve with standing pilot
- Includes double heat shield to keep the valve cooler
- Max BTU input: 115,000 (NG) / 186,000 (LP)
- Compatible with **G4, G45, G45-2, & P** listed burners

ON/OFF REMOTE CONTROL OPTIONS



RR-1A

Standard on/off remote control.

RR-2A

Deluxe on/off remote control. Temperature display and thermal control function.

VARIABLE FLAME REMOTE CONTROL OPTIONS



VR-1A

Standard variable flame height remote control.

VR-2A

Deluxe variable flame height remote control. Thermal control temperature display.



WS-1

Wall switch for log set, on/off control.



WS-2

Wall switch for log set, on/off control with timer.



WS-3

Wall switch for log set, on/off control.
Fits: APK-15 & APK-17 w/wire harness WH-01.

BURNER SIZES & BTU CHART (BTU x 1000)

BURNER SYSTEM	12"		16/19"		18/20"		24"		30"		36"		42"		48"		60"	
	NG	LP	NG	LP	NG	LP	NG	LP	NG	LP	NG	LP	NG	LP	NG	LP	NG	LP
G4	25	25	39	39	75	50	90	65	90	65	120	90	130	110	145	115	150	120
G45			39	39	75	50	90	65	90	65	120	90	130	110	145	115	150	120
G45 (with Assembled Valve)**			40	30	70	45	90	65	90	75	95	75						
G45 (Stainless Steel Pan, Match Lit)			40	--	75	--	90	--	90	--	120	--	130	--	145	--	150	--
G45 (See-Thru)			45	35	80	65	90	75	90	75	130	100	150	120	170	130	190	140
G45 (See-Thru w/Assembled Valve)**			50	35	85	60	105	70	110	90	110	90						
G46**					40	40	55	55	65	65								
EC**							60	60	84	84	100	100			145	145	260	230
EC (See-Thru)**							90	90	110	110	190	180			215	200	260	260
P/PB			45	40	75	60	90	75	90	80	110	90	130	100				
PB (with Assembled Valve)					75	60	90	75	110	90								
P45 (with Assembled Valve)					43	36	65	55	84	70								
P45 (Match Lit)					43	--	65	--	84	--								

BURNER SYSTEM	18/20"		24/30"		33/39"	
	NG	LP	NG	LP	NG	LP
G52 (with Assembled Valve)**	46	36	55	46		
G52 (Match Lit)**	46	--	55	--		
G31 (with Assembled Valve)**	55	40	65	50	85	60
G31 (Match Lit)**	55	--	65	--	85	--

** Check your local codes for your area requirements.

REMOTE / VALVE COMPATIBILITY

REMOTE	EPK-1	EPK-2	APK-10	APK-11	APK-15	APK-17
RR-1A	•	•	•	•		
VR-1A					•	•
RR-2A	•	•	•	•		
VR-2A					•	•
WS-1	•	•	•	•		
WS-2	•	•	•	•		
WS-3					•	•

BURNER / VALVE COMPATIBILITY

VALVE MODEL	BURNER SIZE	
	G4 & G45 STANDARD	G45-2 SEE-THRU
SPK-26	12"-36"	16"-30"
SPK-26P	12"-60"	16"-60"
APK-10	12"-60"	16"-60"
APK-10P	12"-60"	16"-60"
APK-11	12"-30"	16"-18"
APK-11P	12"-42"	16"-30"
APK-15	12"-30"	16"-18"
APK-15P	12"-42"	16"-36"
APK-17	12"-42"	16"-30"
APK-17P	12"-60"	16"-60"
EPK-1	12"-30"	16"-18"
EPK-1P	12"-42"	16"-30"
EPK-1M-AD	12"-30"	16"-18"
EPK-1M-AD/LP	12"-42"	16"-30"
EPK-2	12"-42"	16"-30"
EPK-2P	12"-60"	16"-60"
EPK-2V-TR	12"-42"	16"-30"
EPK-2VP-TR	12"-60"	16"-60"
EPK-3V-TR	12"-60"	16"-60"
EPK-3VP-TR	12"-60"	16"-60"
EPK-05	12"-60"	16"-60"
EPK-05P	12"-60"	16"-60"

PREMIUM ACCESSORIES

Create a cozy and elegant environment in your home with Real Fyre® Gas Logs. To further enhance your hearth, select from an array of additional branches, wood chunks, acorns, and pine cones.

AC-6 Acorns & WCRD-1 Wood Chip Ring shown



PC-4
Designer Pine Cones



AC-6
Acorns



CHA-1
Charred Accessory Kit



WOOD CHIPS:
WCH-6 Charred
WC-6 Designer



CHC-01
Charred Series Chunk



BR-17
17" Oak Branch



SD-BONUS
Designer Bonus Logs



SS-BONUS
Split Bonus Logs



BDC-4
Charred Branches



BR-2
9" Oak Branches



WCRD-1
Wood Chip Ring



WCD-36
36-Pc. Designer Wood Chunks



CS-10
Select White Sand
(10 lb. bag)



LF-15
Vermiculite Granules
(10 lb. bag)



LF-10
Lava-Fyre Granules
(10 lb. bag)



LFC-10
Lava-Fyre Coals
(10 lb. bag)



EB-1
Black Embers
(10 lb. bag)



VS-25
Volcanic Stones
• VS-25 - 25 lb. box
• VS-12 - 12 lb. box



EM-1
Ember Glow
(6 oz. - 168 g)



EM-1S
Super Embers
(Includes Bryte Coals)
(6 oz. - 168 g)



EM-11
Bryte Coals
(0.7 g)



WCDC-1
Wood Chunk Decor Cover
(Hides remote receiver or crackler)



PCDC-1
Pine Cone Decor Cover
(Hides remote receiver or crackler)



CHEC-1
Charred Valve Cover



WCEC-1
Designer Valve Cover



GL-1
Glowing Ember Adhesive



Log Lighters (Natural Gas only)
• LG-1 Rigid Single Gas log lighter
• LL-1 Gasaver Single Gas log lighter
• LC-1 14" Cast Iron log lighter



FF-04
Cast Iron Fender (18", 24", 30")
(For all gas log sets)



AV-17 & AV-18
Manual Valves



AV-30
Straight Line Gas Valve with Key

DECOR PACKS



DP-2
Decor Pack



DP-5
Decor Pack



DP-7
Decor Pack
(Featuring Bryte Coals)



HDK-1
Decor Pack



RK-1
Refresh Kit
(Natural Gas)

CRAFTED WITH PRIDE  IN THE USA

 **realfyre™**
PREMIUM GAS LOGS

14724 PROCTOR AVE. CITY OF INDUSTRY, CA 91746
WWW.REALFYRE.COM

Real Fyre® Vented Gas Log Sets Limited Warranty Highlights

All Peterson Vented Ceramic Refractory Gas Logs are warranted for as long as you own them (**Lifetime**).

All Peterson Vented Burners are warranted for **Ten (10) Years**.

SPK-26 controls are covered by a **Three (3) Year** "ALL PARTS" warranty; the APK-17 valve is warranted for **Two (2) Years**.

All other Peterson valves, pilots and controls are covered by a **One (1) Year** Limited Warranty (excluding batteries).

Real Fyre® Charred Majestic Oak (CHMJ) gas logs shown in Estate Series fireplace by Lennox on front cover
Real Fyre® Woodstack (WS) gas logs (w/Wood Chip Ring, Pine Cone, & Acorns) shown in Estate Series fireplace by Lennox on back cover
The Robert H. Peterson Co. reserves the right to amend product specifications without prior notice.

Real Fyre® Gas Logs are accepted by national and local building codes and authorities, and are available with one or more of the following listings or certifications: CSA, RADCO, OMNI, ICC

Proud members of Hearth, Patio and Barbecue Association (HPBA), National Propane Gas Association (NPGA), and National Fireplace Institute (NFI) Advocate.



L-A1-01819

