

Optional Protective Reverb Screen Kits

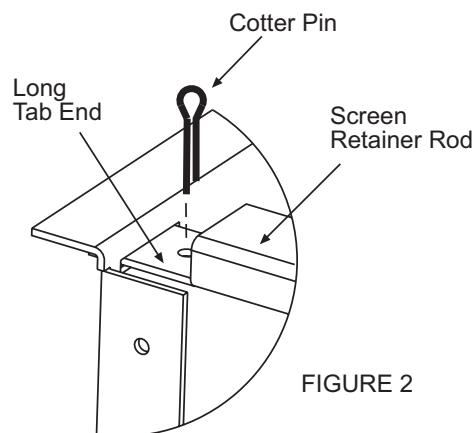
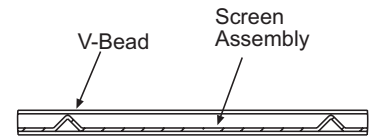
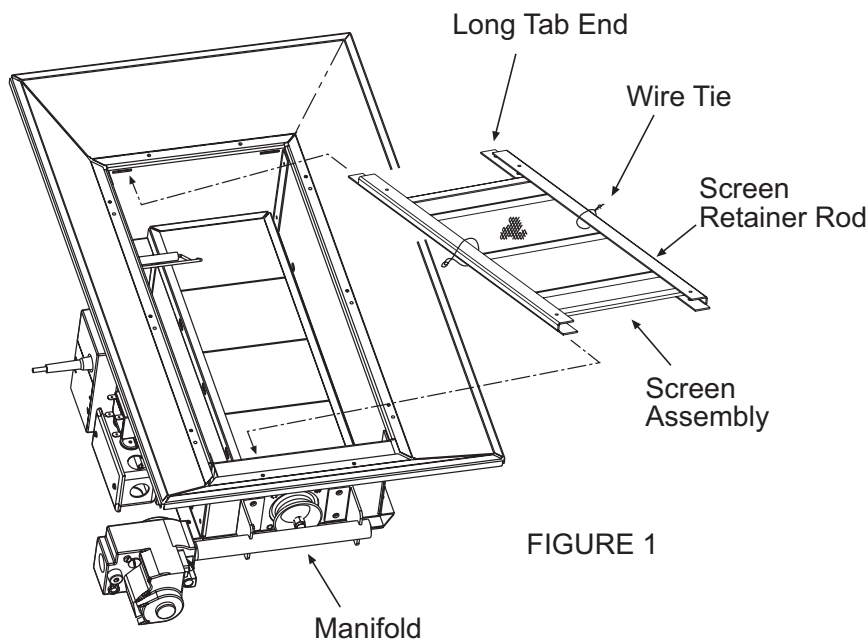
Ceramic Heaters

Description:

This is a reverberatory screen designed to increase the overall emissivity of the radiating surface with a blackbody radiation effect. It also acts as a safety net in the unlikely event that the ceramic tile assembly is broken by an outside force.

Installation of Screen Assembly: *(One-Burner Unit Only)*

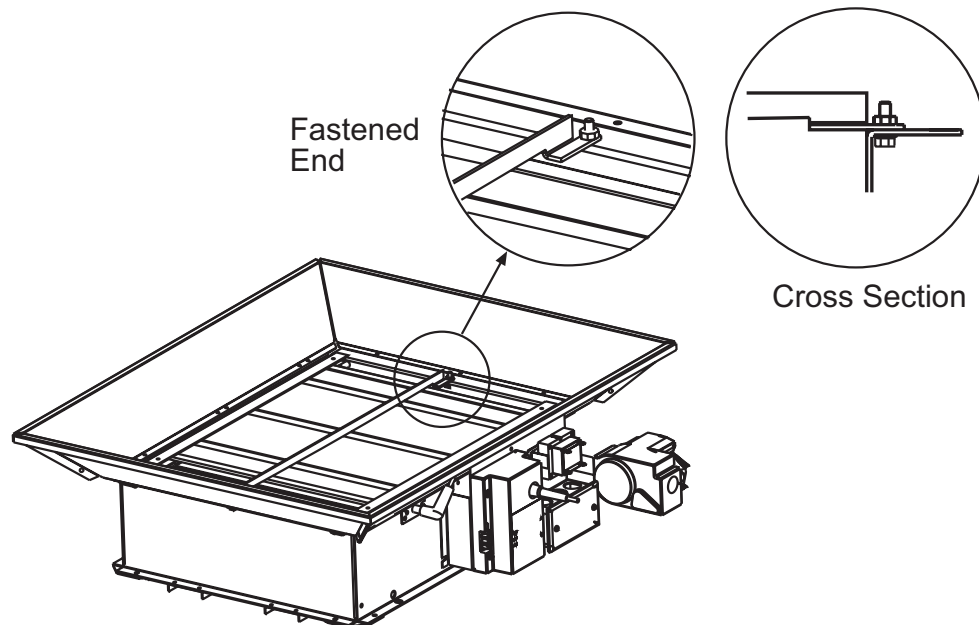
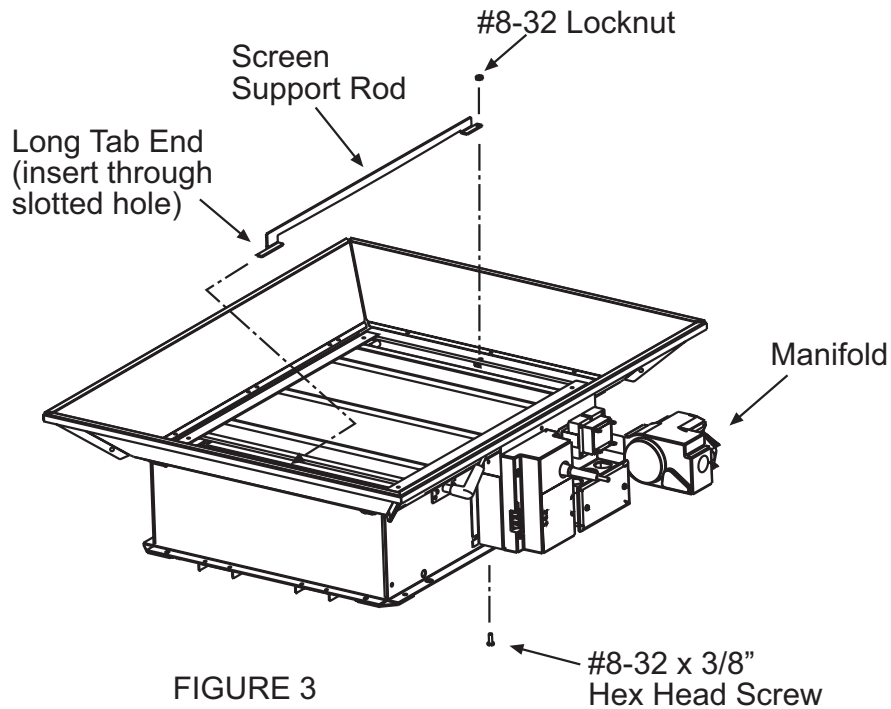
1. Place the heater on a table with the reflector side up. Insert the long tab ends of the screen retainer rods through the slotted holes of the heater panel opposite the manifold side. **See FIGURE 1. NOTE:** Make sure that the V-beads formed in the screen are facing up when inserting the screen retainer rods into the heater. **See FIGURE 1a.**
2. Slide the opposite end of the rods into the heater panel located at the manifold side until the rods are flush against the panel.
3. Use the cotter pins (provided in the kit) and insert into the long tab of each screen retainer rod. **See FIGURE 2.** These will prevent the screen assembly from sliding out of the slotted holes. Cut and remove the two wire ties holding the assembly together.



Installation of Screen Assembly and Support Rod:

(Two-Burner, Three-Burner, or Four-Burner Units Only)

1. Install the screen assembly as described earlier for the One-Burner unit. **See FIGURES 1,1a and 2.**
2. Insert the long tab end of the screen center support rod through the slotted hole of the heater panel opposite the manifold side. **See FIGURE 3.**
3. Place the opposite end of the center support rod flat against the heater panel located at the manifold side. Secure this end using the screw and nut provided in the kit. **See FIGURES 3, 4 and 5.**



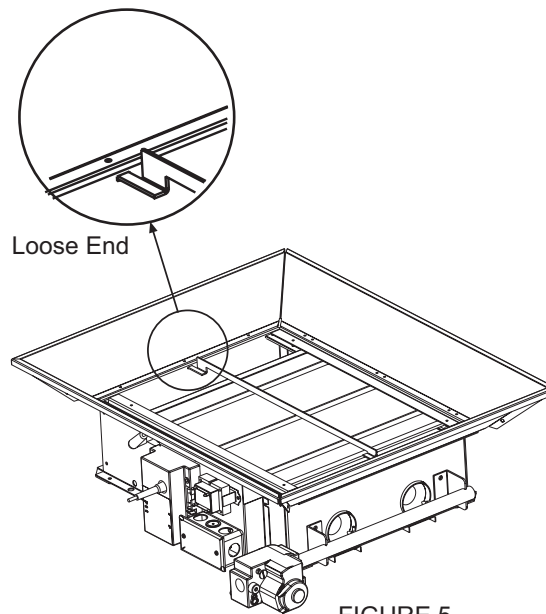


FIGURE 5

KIT COMPONENTS:

Kit Number 43876010

Reverb Screen, One-Burner Models

Containing: #02080020 Cotter Pin, 1/8 x 1/2 (2 each)
 #43814010 Screen Assembly
 #43878020 Instruction Sheet

Kit Number 43876020

Reverb Screen, Two-Burner Models

Containing: #02080020 Cotter Pin, 1/8 x 1/2 (2 each)
 #02215050 Hex Head Screw #8-32 x 3/8"
 #02186040 Locknut #8-32
 #43815050 Screen Support Rod
 #43814020 Screen Assembly
 #43878020 Instruction Sheet

Kit Number 43876030

Reverb Screen, Three-Burner Models

Containing: #02080020 Cotter Pin, 1/8 x 1/2 (2 each)
 #02215050 Hex Head Screw #8-32 x 3/8"
 #02186040 Locknut #8-32
 #43815050 Screen Support Rod
 #43814030 Screen Assembly
 #43878020 Instruction Sheet

Kit Number 43876040

Reverb Screen, Four-Burner Models

Containing: #02080020 Cotter Pin, 1/8 x 1/2 (2 each)
 #02215050 Hex Head Screw #8-32 x 3/8"
 #02186040 Locknut #8-32 x 3/8"
 #43815050 Screen Support Rod
 #43814040 Screen Assembly
 #43878020 Instruction Sheet